

# Sales - Plot - Marbella

## 1.000.000€

Marbella

Plot



1200 m2



1609 m2

Residential plot with project for 1 large villa and 2 town houses, this can be changed to to make one very large villa potential of some sea views from the top levels, location is less than 5 mins walk to the beach Residential Plot, Marbella, Costa del Sol. Garden/Plot 1609 m<sup>2</sup>. Setting : Town, Close To Shops, Close To Sea. Orientation : South. Views : Sea. Category : Investment, With Planning Permission.

### Setting

- ✓ Town
- ✓ Close To Shops
- ✓ Close To Sea

### Orientation

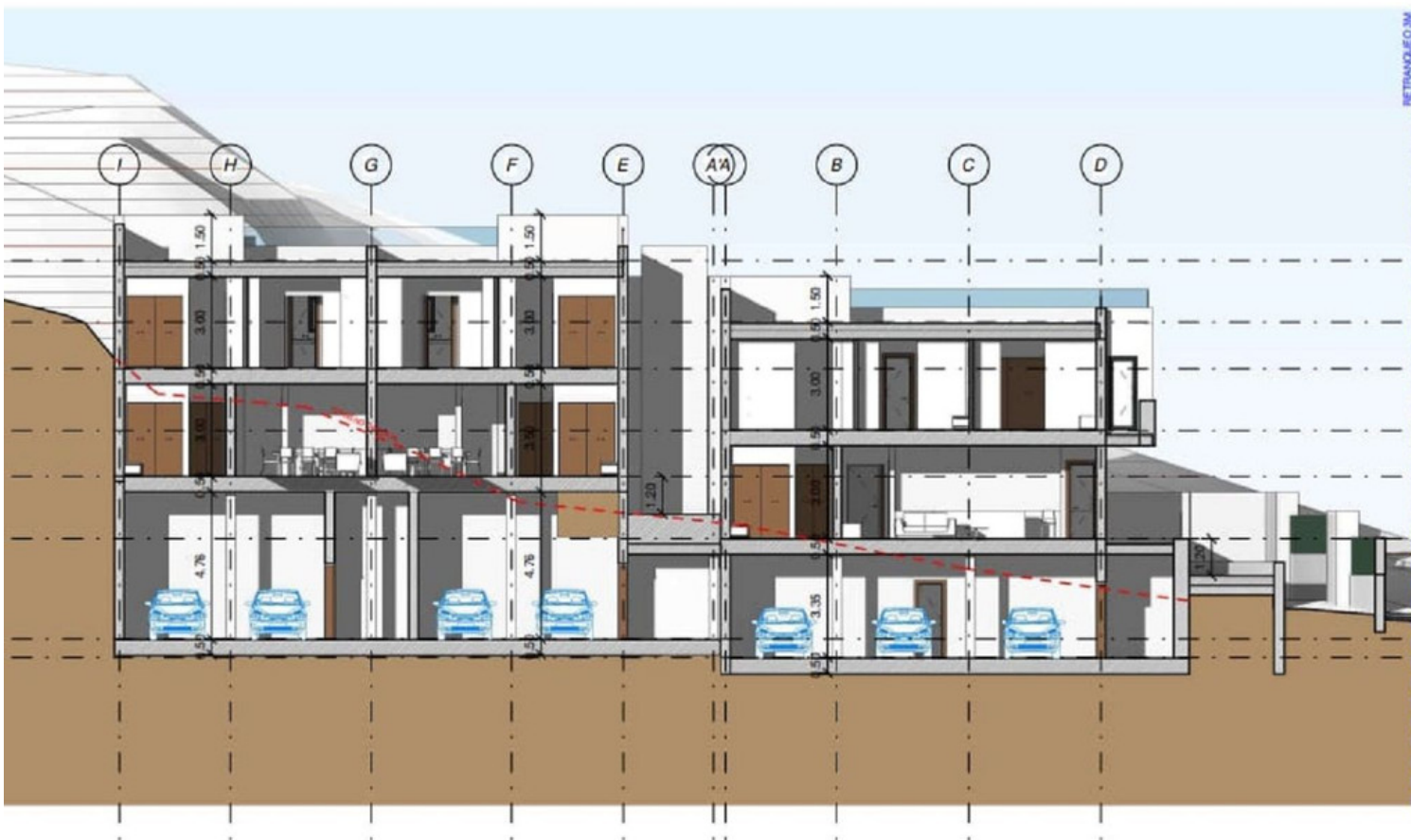
- ✓ South

### Views

- ✓ Sea

### Category

- ✓ Investment
- ✓ With Planning Permission











Parcela en Marbella centro - Residencial

Parcela 1600 m2  
Edificabilidad 40%  
Ocupación 35%  
Residencial

