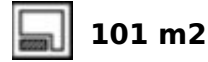


Sales - House - Benalmadena Pueblo

250.000€

Benalmadena Pueblo

House



SEMI-DETACHED HOUSE with spectacular SEA VIEWS located in Benalmádena Pueblo, a short distance from the well-known La Fonda hotel. Great location, in a peaceful environment but at same time close to the centre of Benalmádena Pueblo. It is the opportunity to build the property of your dreams. The house is sold as seen in the pictures, so the future owner can finish it to his liking. Basement with space for 2 cars and storage space. It has 2 terraces, approximately 10 m2 each one, with beautiful views. Sunny and bright property, facing SOUTH. The distribution is as follows: -Basement: Garage with space for 2 cars and storage. -Ground floor: Living room with access to terrace, kitchen and toilet. -Middle floor: 2 bedrooms + 2 bathrooms (one of them en suite). Additionally, each bedroom has access to its own terrace. -Top floor: Master bedroom with en suite bathroom. Total size: 246 m2. Useful area: 200 m2. Floors: 4. Orientation: South. *Distances: -Restaurants: 250 mts. -Benalmádena Pueblo centre: 300 mts. -Shops: 300 mts. -Benalmádena Pueblo Town Hall: 500 mts. -Beach: 2.5 km. -Málaga airport: 15 km.

Setting

- ✓ Close To Shops
- ✓ Close To Town
- ✓ Close To Schools

Features

- ✓ Covered Terrace
- ✓ Fitted Wardrobes
- ✓ Near Transport
- ✓ Private Terrace
- ✓ Storage Room
- ✓ Ensuite Bathroom
- ✓ Basement

Orientation

- ✓ South

Furniture

- ✓ Not Furnished

Condition

- ✓ Renovation Required

Parking

- ✓ Garage
- ✓ Covered
- ✓ Private

Views

- ✓ Sea
- ✓ Mountain
- ✓ Panoramic

Category

- ✓ Investment









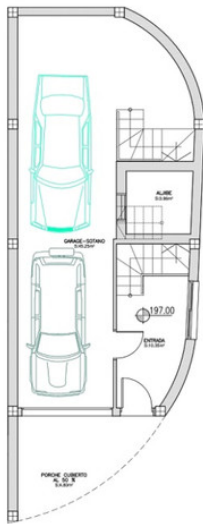




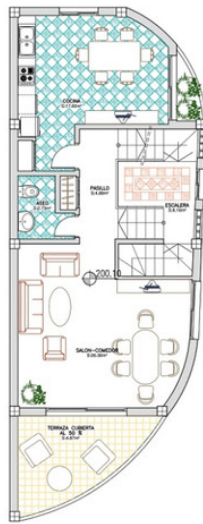




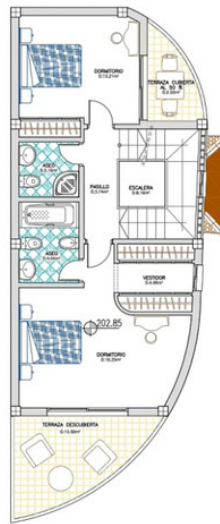




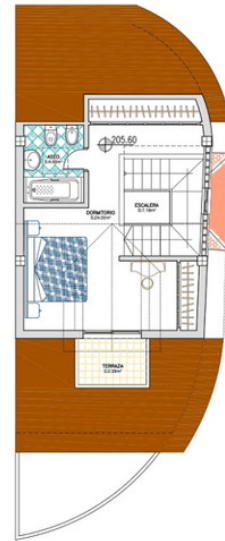
PLANTA SOTANO MOBILIARIO
 SUP. CONSTRUIDA: 72.70m²
 SUP. UTIL : 55.60m²
 SUP. PORCHE CUBIERTO AL 50% : 4.80m²



PLANTA BAJA MOBILIARIO
 SUP. CONSTRUIDA: 70.33m²
 SUP. UTIL : 59.65m²
 SUP. TERRAZA CUBIERTO AL 50% : 4.87m²



PLANTA ALTA MOBILIARIO
 SUP. CONSTRUIDA: 67.62m²
 SUP. UTIL : 56.12m²
 SUP. TERRAZA DESCUBIERTA : 10.58m²
 SUP. TERRAZA CUBIERTO AL 50% : 2.03m²



PLANTA BAJO CUBIERTA MOBILIARIO
 SUP. CONSTRUIDA: 36.05m²
 SUP. UTIL : 28.50m²
 SUP. TERRAZA DESCUBIERTA : 2.99m²