

## Sales - Apartment - Torremolinos

# 382.100€

**Torremolinos**

**Apartment**

**Community: 1,116 EUR / year**

**IBI: 530 EUR / year**



**2**



**2**



**96 m2**

Apartment in Playamar with South-Facing Terrace Explore this inviting apartment tucked away in the peaceful residential neighborhood of Playamar in Torremolinos. Just a brief 5-minute stroll from the sandy beaches and lively beach bars of Playamar, this residence offers the ideal balance of convenience and tranquility. Key Features: Prime Location: Conveniently situated in Playamar, a mere 5-minute walk from the beaches and bustling beach bars. It's only 200 meters from the beach and the Maritime Hospital, with nearby amenities including schools, pharmacies, and supermarkets. Easy Access: Just a short 10-minute drive from the airport, and a quick 5-minute drive to the golf course and Plaza Mayor shopping center. Sun-Drenched Terrace: Bask in natural light and soak up sunny days on the south-facing terrace. Spacious Living: Boasting a generous total area of 94 m<sup>2</sup>, with 72 m<sup>2</sup> of usable space, this apartment comprises 2 bedrooms with built-in wardrobes and 2 bathrooms. Fresh Kitchen Update: The apartment features a newly updated kitchen, adding a fresh new look to the living space. Underground Garage and Storage: Benefit from the convenience of underground parking and a storage room, providing ample space for your belongings. Well-Maintained: Enjoy the comfort of marble floors and air conditioning throughout, ensuring a cozy ambiance year-round. Community Amenities: Take advantage of the lush gardens, two pools, and paddle tennis courts available within the complex. STORAGE AND PARKING SPACE NOT INCLUDED IN THE PRICE. WITH STORAGE AND PARKING, THE PRICE IS €409.800. This charming apartment offers a wonderful opportunity for those seeking a cozy beachside retreat in Torremolinos. Don't let this chance slip by - get in touch with us today to schedule a viewing!

### Setting

- ✓ Town
- ✓ Close To Shops
- ✓ Close To Sea

### Views

- ✓ Pool

### Orientation

- ✓ South East

### Features

- ✓ Covered Terrace
- ✓ Fitted Wardrobes
- ✓ Storage Room
- ✓ Marble Flooring

### Condition

- ✓ Good

### Parking

- ✓ Underground
- ✓ Garage

### Pool

- ✓ Communal





















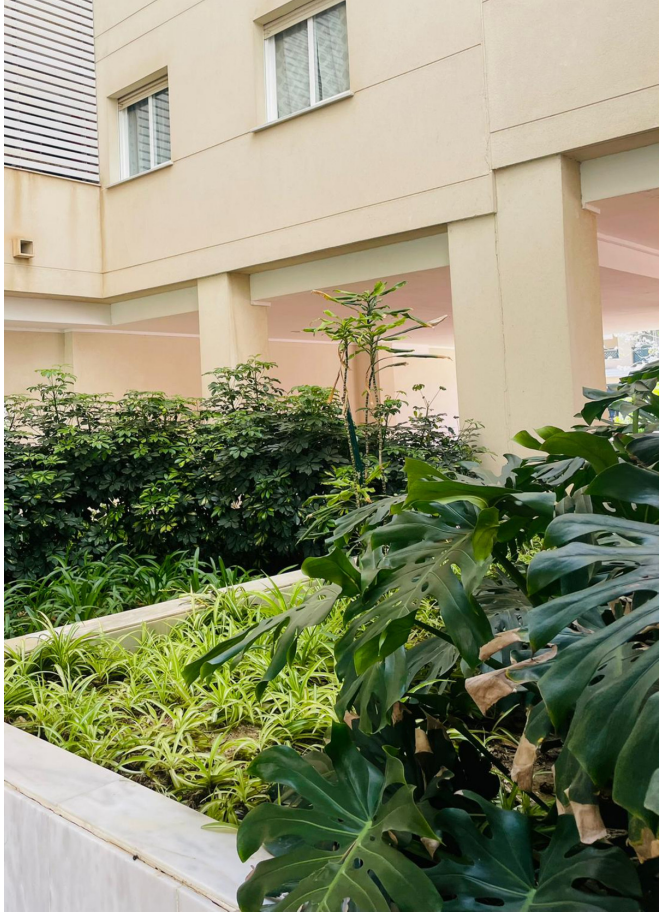








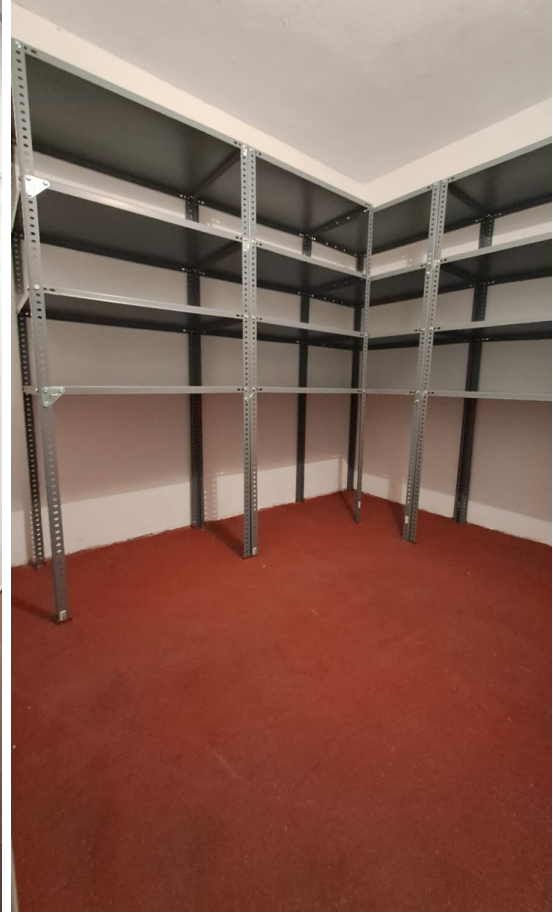
















34

Conjunto Residencial  
**COSTACOLINA**



edipsa