

# Sales - Apartment - Marbella

## 437.000€

**Marbella**

**Apartment**

**Community: 1,908 EUR / year IBI: 603 EUR / year**

**Rubbish: 92 EUR / year**



**2**



**2**



**72 m2**

\*\*\* Spectacular Duplex Apartment in Front of the Golf in Marbella \*\*\* 2 Bedrooms and 1 Bathroom \*\*\* Private Terrace and Solarium of 40 m2 \*\*\* Stunning Views of the Golf Course and La Concha Mountain \*\*\* Fully Equipped Renovated Kitchen Siemens \*\*\* Condition Excellent hours \*\*\* Marble Floors \*\*\* Centralized Air Conditioning \*\*\* Underground Parking Space \*\*\* Gated Complex with Swimming Pools, Fountains and Mature Gardens \*\*\* 24-hour Security and Concierge \*\*\* Location Ideal In Front of the Aloha Golf Course \*\*\* Easy Access to Marbella and Puerto Banús \*\*\* Surrounded by Golf Courses, Beaches, Restaurants, International Schools and Other Services \*\*\* Ask for the Video!!! \*\*\*

### Setting

- ✓ Close To Golf
- ✓ Close To Port
- ✓ Close To Shops
- ✓ Close To Sea
- ✓ Close To Town
- ✓ Close To Schools
- ✓ Close To Forest
- ✓ Close To Marina
- ✓ Urbanisation

### Views

- ✓ Mountain
- ✓ Golf
- ✓ Panoramic
- ✓ Garden
- ✓ Forest

### Garden

- ✓ Communal
- ✓ Landscaped

### Category

- ✓ Golf
- ✓ Holiday Homes
- ✓ Investment
- ✓ Luxury
- ✓ Resale
- ✓ Contemporary

### Condition

- ✓ Excellent

### Features

- ✓ Lift
- ✓ Fitted Wardrobes
- ✓ Near Transport
- ✓ Private Terrace
- ✓ Solarium
- ✓ Satellite TV
- ✓ WiFi
- ✓ Storage Room
- ✓ Ensuite Bathroom
- ✓ Marble Flooring
- ✓ Double Glazing
- ✓ Fiber Optic

### Security

- ✓ Gated Complex
- ✓ Entry Phone
- ✓ Alarm System
- ✓ Safe

### Pool

- ✓ Communal
- ✓ Children`s Pool

### Furniture

- ✓ Optional

### Parking

- ✓ Underground
- ✓ Garage
- ✓ Private

### Climate Control

- ✓ Air Conditioning

### Kitchen

- ✓ Fully Fitted

### Utilities

- ✓ Electricity
- ✓ Drinkable Water
- ✓ Telephone
- ✓ Gas







































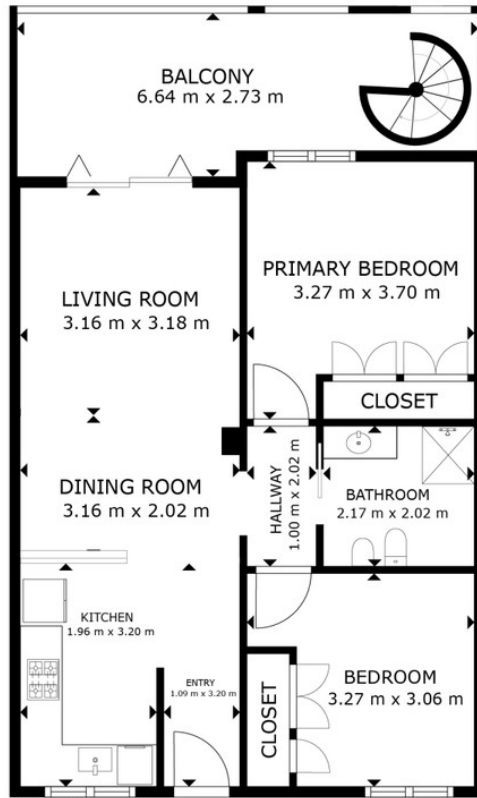












FLOOR PLAN

GROSS INTERNAL AREA  
 FLOOR PLAN: 57 m<sup>2</sup>  
 EXCLUDED AREA: BALCONY: 14 m<sup>2</sup>  
 SIZES AND DIMENSIONS ARE APPROXIMATE, ACTUAL MAY VARY.

