

Sales - House - The Golden Mile

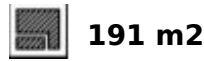
998.000€

The Golden Mile

House

Community: 4,584 EUR / year

Rubbish: 1,330 EUR / year



Marbella's Golden Mile....one of the most sought-after locations on the Costa del Sol. A precious and rare opportunity with this very large duplex property, with tonnes of authenticity and huge potential for a stunning reform. This incredible classic Marbella home is within a secure gated community with guard 24/7, 3 outdoor communal swimming pools, squash court, sauna and gym. Comes with a secure private garage for one car and a large storeroom. Here is a dreamily authentic Marbella residential complex built within the Golden Mile. Situated within Marbella's lovely coast with the mountain of La Concha as a backdrop, this complex was built in 1985, and represents a bygone era when Marbella was still a the preserve exclusively of the wealthy and famous who sought out a discreet location within which to spend their holidays. Built in a true Andalusian pueblo style with vast, manicured gardens and spaces that allow for an abundance of light, this classical Marbella residence sits at the foot of Marbella's iconic la Concha mountain, within the boundary of las Lomas del Puente Romano. This very remarkable duplex property in the Marbella Golden Mile is one that has to be seen to be believed. It is timeless in it's elegance, true in it's authenticity, and enormous in it's potential. With Marbella's Golden Mile proving to be one of the most sought-after locations in the Costa del Sol, a property like this is a rare find and with the right attention will bring a handsome reward to it's new owner.

Setting

- ✓ Suburban
- ✓ Urbanisation

Views

- ✓ Garden
- ✓ Pool

Garden

- ✓ Communal

Orientation

- ✓ East
- ✓ South East

Features

- ✓ Covered Terrace
- ✓ Private Terrace
- ✓ Gym

Security

- ✓ Gated Complex
- ✓ 24 Hour Security

Condition

- ✓ Renovation Required

Furniture

- ✓ Not Furnished

Pool

- ✓ Communal

Kitchen

- ✓ Fully Fitted















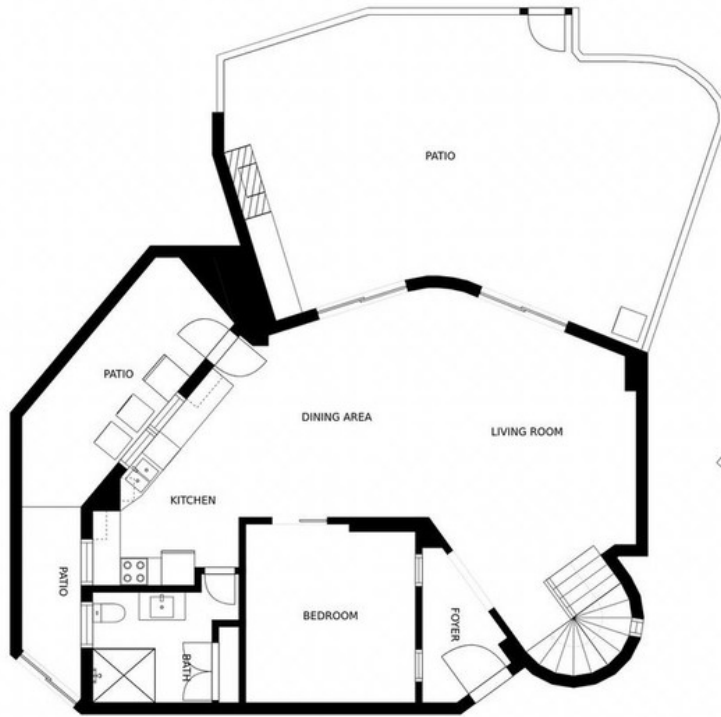




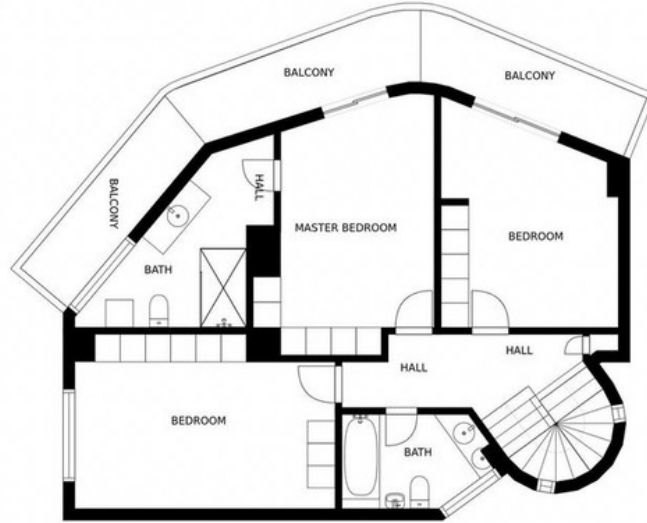








FLOOR 1



FLOOR 2