

Sales - Commercial - Benahavís

460.000€

Benahavís

Commercial

IBI: 753 EUR / year

Rubbish: 30 EUR / year



1



1



171 m2

Unique building in the center of Benahavís village, next to Los Abanicos restaurant. This building has a commercial premise on the main level being used as a bar. This level enjoys a glazed terrace at the back of the building with great views and can also use the main street of Benahavís to have more tables. There's an underground level with more than 50 sqm to use and it offers several options to maximize the space and the functionality. On the top level, several open areas can be used as a dwelling and one level above there is access to a small rooftop terrace. This building represents a great investment opportunity in a very sought-after location.

Setting

- ✓ Town
- ✓ Village
- ✓ Mountain Pueblo
- ✓ Close To Golf
- ✓ Close To Shops
- ✓ Close To Schools

Features

- ✓ Private Terrace

Orientation

- ✓ South
- ✓ West

Utilities

- ✓ Electricity
- ✓ Drinkable Water

Condition

- ✓ Good
- ✓ Renovation Required

Category

- ✓ Investment
- ✓ Resale

Views

- ✓ Mountain
- ✓ Urban
- ✓ Street











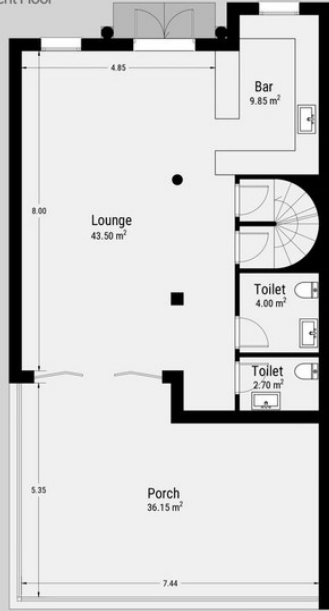




Benahavis

Bar / Kitchen

Ground and Semi Basement Floor



Ground Floor

Semi Basement Floor



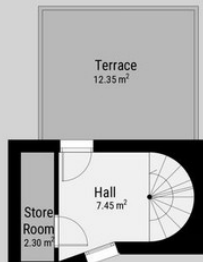
This floorplan was created for illustrative purposes only. Neither the vendor nor the real estate agent guarantees the correctness of the measurements. The floor plan depicted may differ in size and shape from the actual property.
© 2024 MiMove Franchise S.L.

MIMOVE

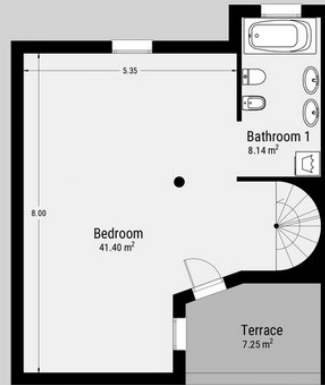
Benahavis

1 Bedrooms/ 2 Bathrooms

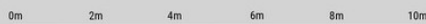
First and Top Floor



Top Floor



First Floor



This floorplan was created for illustrative purposes only. Neither the vendor nor the real estate agent guarantees the correctness of the measurements. The floor plan depicted may differ in size and shape from the actual property.
© 2024 MiMove Franchise S.L.

MIMOVE