

Sales - Apartment - Benahavís

639.000€

Benahavís

Apartment



3



2



135 m2

A 3 bedroom penthouse apartment located in Benahavis Village, within a secure and exclusive gated community. This modern, contemporary-style residence is beautifully furnished and offers a perfect blend of luxury and comfort. Boasting three tastefully decorated bedrooms 2 of which are en-suite, this penthouse provides ample space and privacy for you and your family. The open-plan living areas are designed to maximize natural light, creating a warm and inviting atmosphere ideal for both relaxation and entertaining. One of the standout features of this property is the large solarium, where you can enjoy breathtaking views of the mountains and surrounding countryside. The solarium is thoughtfully designed with comfortable seating and dining areas, as well as an outdoor BBQ area, making it perfect for hosting gatherings or simply enjoying a quiet evening under the stars. The grounds of the apartment complex are meticulously maintained, featuring lush gardens and a superb swimming pool where you can unwind and soak up the sun. This penthouse is a must-see for those seeking a high-quality living experience. It is an excellent investment opportunity for short-term letting or a luxurious family home. Don't miss the chance to own a piece of paradise in Riverside Benahavis Village. Contact us today to arrange a viewing.

Setting

- ✓ Suburban
- ✓ Country
- ✓ Village
- ✓ Mountain Pueblo
- ✓ Close To Schools
- ✓ Urbanisation

Climate Control

- ✓ Air Conditioning
- ✓ Hot A/C
- ✓ Cold A/C

Kitchen

- ✓ Fully Fitted

Category

- ✓ Luxury
- ✓ Resale

Orientation

- ✓ South East

Views

- ✓ Mountain
- ✓ Country
- ✓ Forest

Garden

- ✓ Communal

Condition

- ✓ Excellent

Features

- ✓ Lift
- ✓ Fitted Wardrobes
- ✓ Private Terrace
- ✓ Solarium
- ✓ Utility Room

Security

- ✓ Gated Complex

Pool

- ✓ Communal

Furniture

- ✓ Optional

Parking

- ✓ Underground
- ✓ Garage













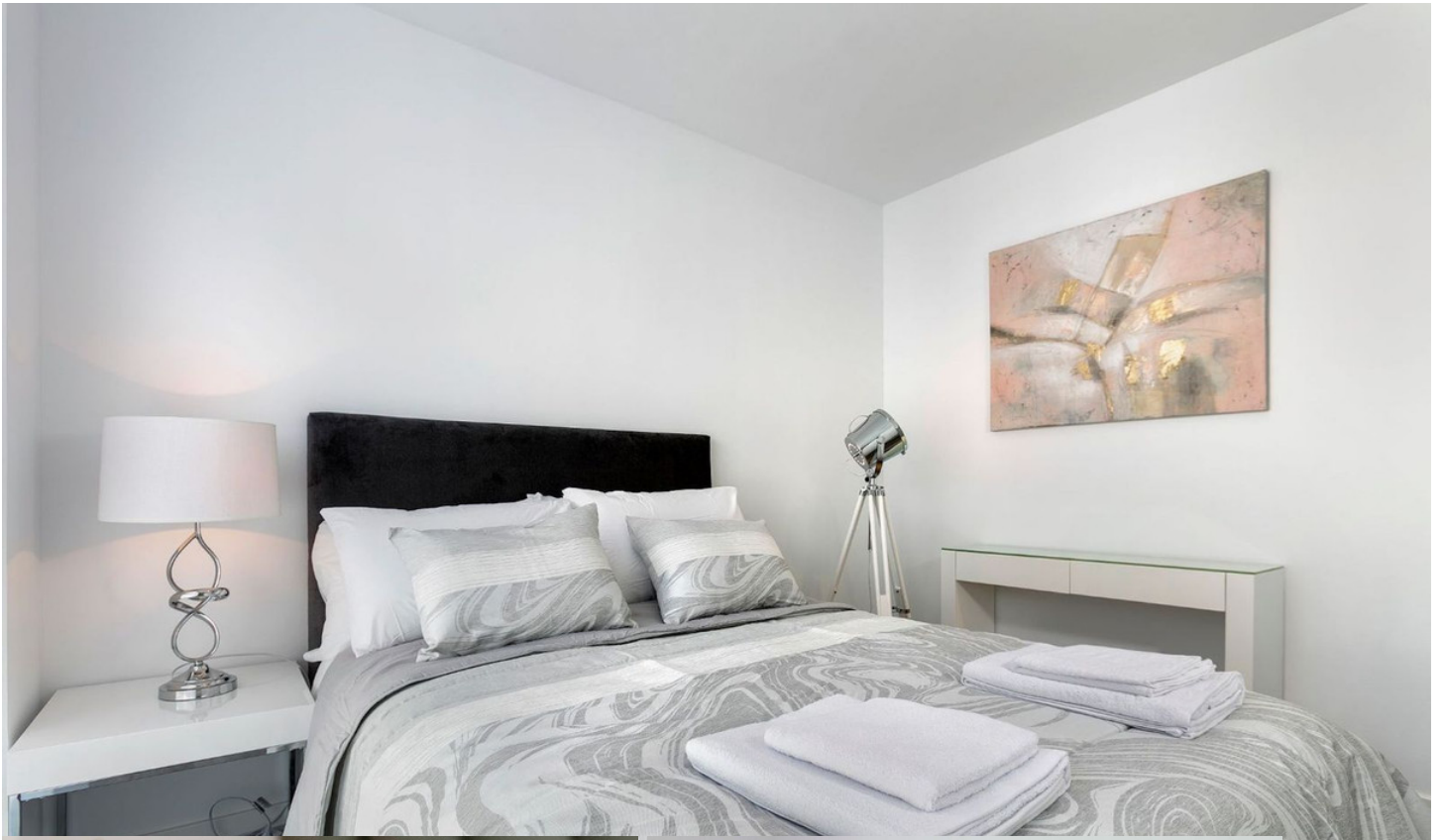




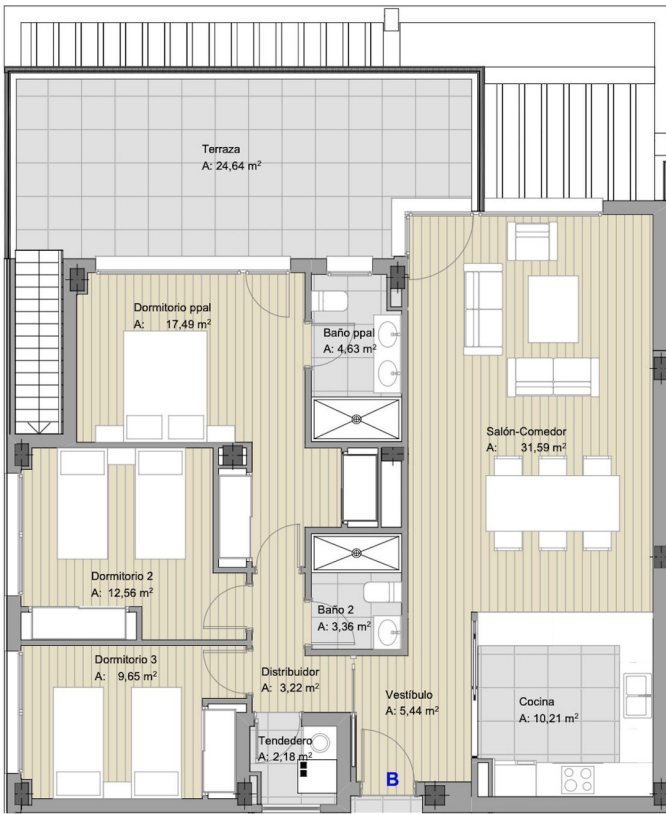




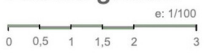




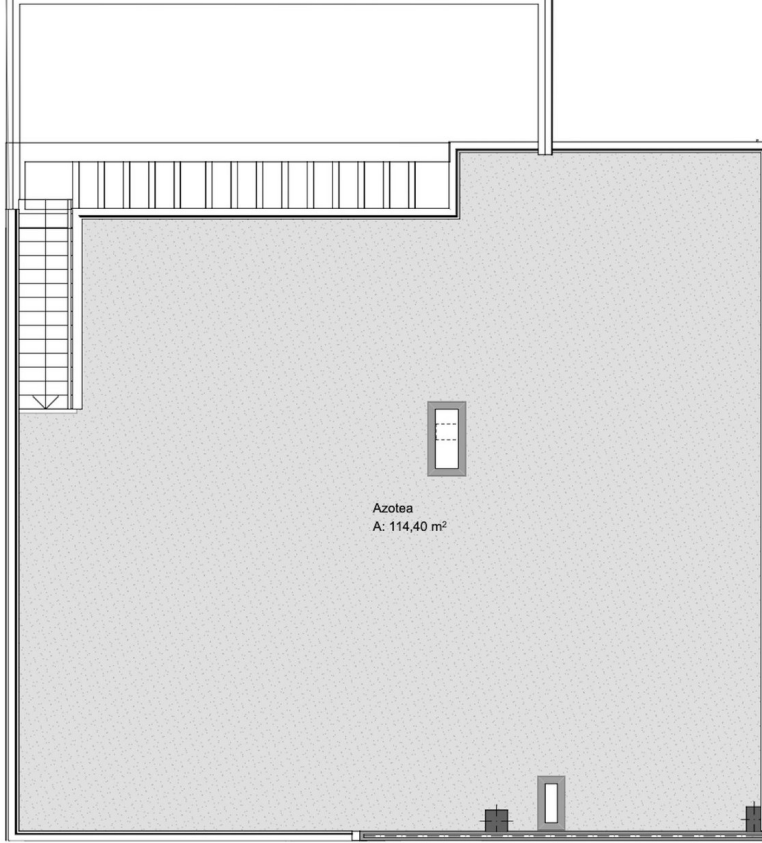




Escala gráfica



NIVEL 4



NIVEL 5



