

## Sales - House - Marbella

# 750.000€

Marbella

House

IBI: 922 EUR / year



4



2



302 m2



394 m2

Detached House with Garden and Private Pool in Marbella Detached house with spacious garden and private pool, located in a very quiet area just 7 minutes from the heart of Marbella. The property is distributed over two floors plus a basement equipped with parking for two vehicles. The ground floor offers a spacious living room with fireplace, a dining room, and a living room that opens onto a beautiful garden, complete with an extensive pool offering total privacy. A generously sized kitchen-dining area, a master bedroom with private bathroom, and a toilet complete the ground floor. A wide staircase leads to the first floor, where you will find three bedrooms, each with a spacious terrace. Excellent location with easy access to the highway and freeway, and just 35 minutes from Malaga Airport. Overall, this residence is a cozy family home with plenty of character

**GROUND FLOOR:** Spacious living room with integrated fireplace. Dining room Living room opening onto a beautiful garden Spacious kitchen-dining area Master bedroom with private bathroom Toilet

**UPPER FLOOR:** 3 bedrooms with spacious terraces 1 bathroom 2 terraces (4x2.5m) 1 balcony (1x4.2m) Garage for two cars

Large pool and well-maintained garden

### Setting

- ✓ Town
- ✓ Commercial Area
- ✓ Close To Shops

### Climate Control

- ✓ Air Conditioning
- ✓ Fireplace

### Kitchen

- ✓ Fully Fitted

### Orientation

- ✓ South

### Views

- ✓ Panoramic
- ✓ Urban

### Garden

- ✓ Private
- ✓ Easy Maintenance

### Condition

- ✓ Excellent

### Features

- ✓ Covered Terrace
- ✓ Fitted Wardrobes
- ✓ Near Transport
- ✓ WiFi
- ✓ Storage Room
- ✓ Utility Room
- ✓ Ensuite Bathroom
- ✓ Basement

### Parking

- ✓ Garage
- ✓ Covered
- ✓ Street
- ✓ More Than One

### Pool

- ✓ Private

### Furniture

- ✓ Part Furnished

### Utilities

- ✓ Electricity
- ✓ Drinkable Water
- ✓ Telephone



































































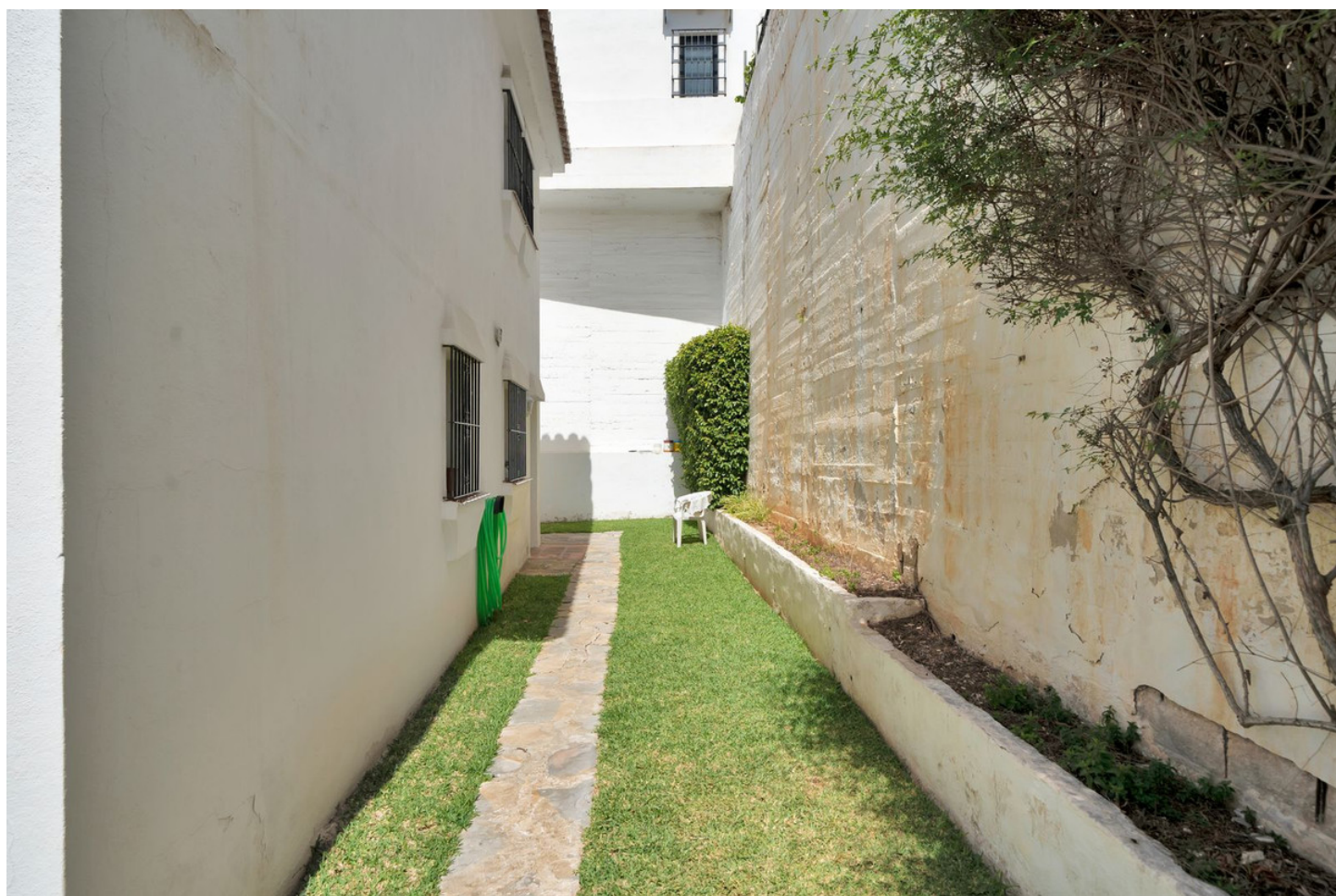
























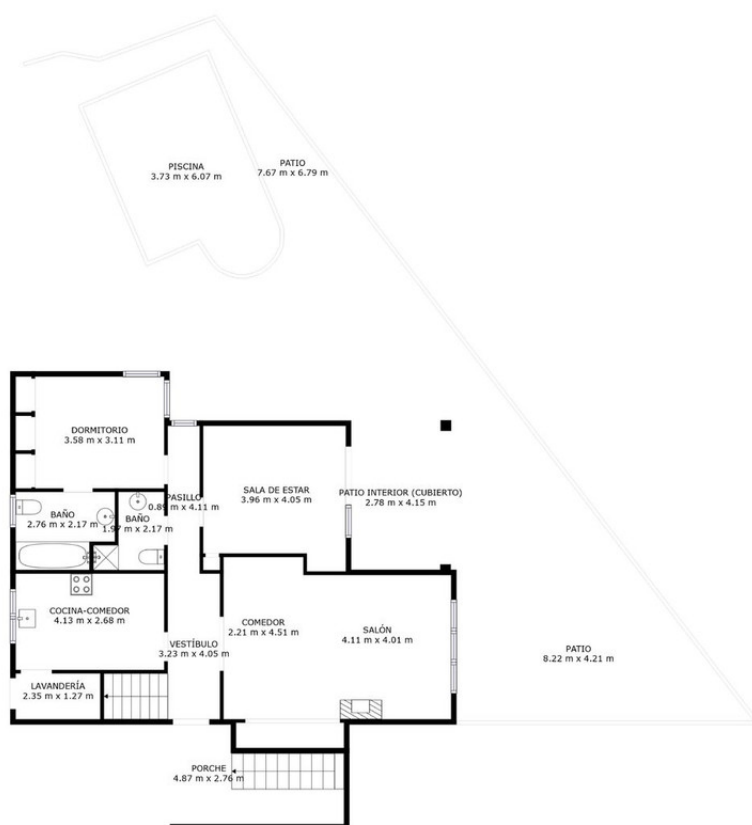






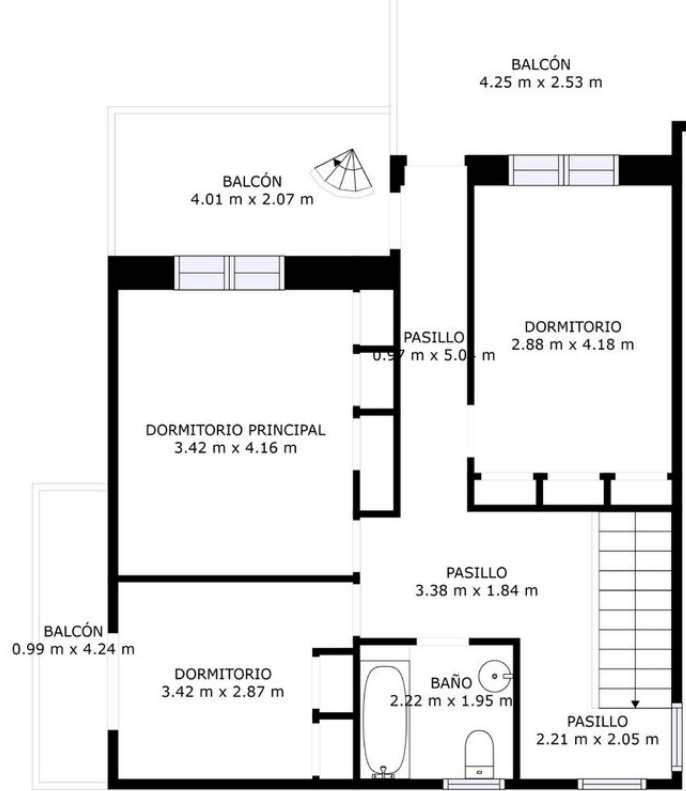




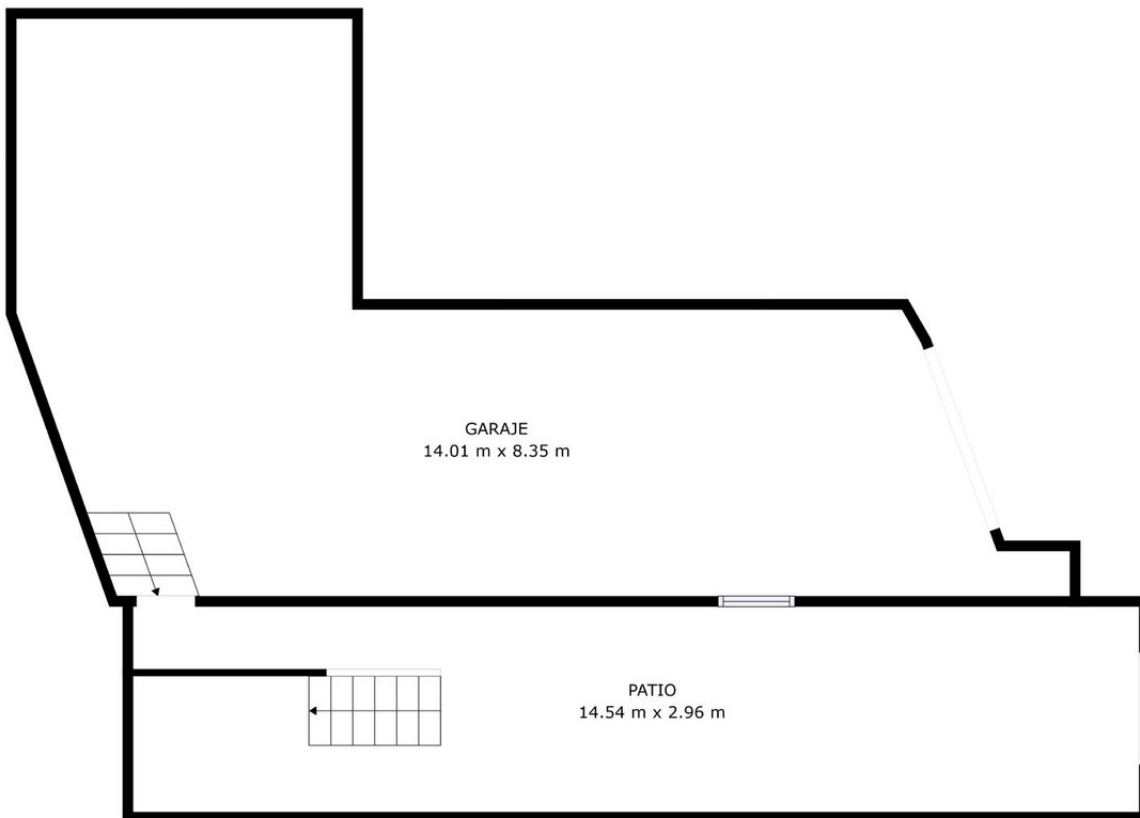


LAS MEDIDAS Y DIMENSIONES SON APROXIMADAS, LAS REALES PUEDEN VARIAR.





LAS MEDIDAS Y DIMENSIONES SON APROXIMADAS, LAS REALES PUEDEN VARIAR.



LAS MEDIDAS Y DIMENSIONES SON APROXIMADAS, LAS REALES PUEDEN VARIAR.