

Sales - House - Puerto Banús

650.000€

Puerto Banús

House

Community: 2,040 EUR / year IBI: 1,240 EUR / year

Rubbish: 184 EUR / year



Welcome to this corner townhouse in Azalea Beach with an unbeatable location on the beachside between Puerto Banús and San Pedro de Alcántara! This cozy townhouse offers 3 bedrooms, 2 bathrooms and a guest toilet. By the entrance to the property you have a spacious private terrace, perfect for a chill out area with evening sun. As you enter the property, on the entrance level you will find a guest toilet, kitchen, living and dining room. From the living room you have access to the back terrace and garden area. On the upper level you will find 3 bedroom and 2 bathrooms. The master bedroom has an en-suite bathroom and a small terrace. The urbanization has beautiful gardens and 5 swimming pools. Garage included in the price. Welcome!

Setting

- ✓ Beachside
- ✓ Close To Shops
- ✓ Close To Sea
- ✓ Close To Town
- ✓ Close To Schools
- ✓ Close To Marina

Climate Control

- ✓ Air Conditioning

Parking

- ✓ Garage

Orientation

- ✓ South East

Furniture

- ✓ Fully Furnished

Condition

- ✓ Excellent

Kitchen

- ✓ Fully Fitted

Pool

- ✓ Communal

Security

- ✓ Gated Complex















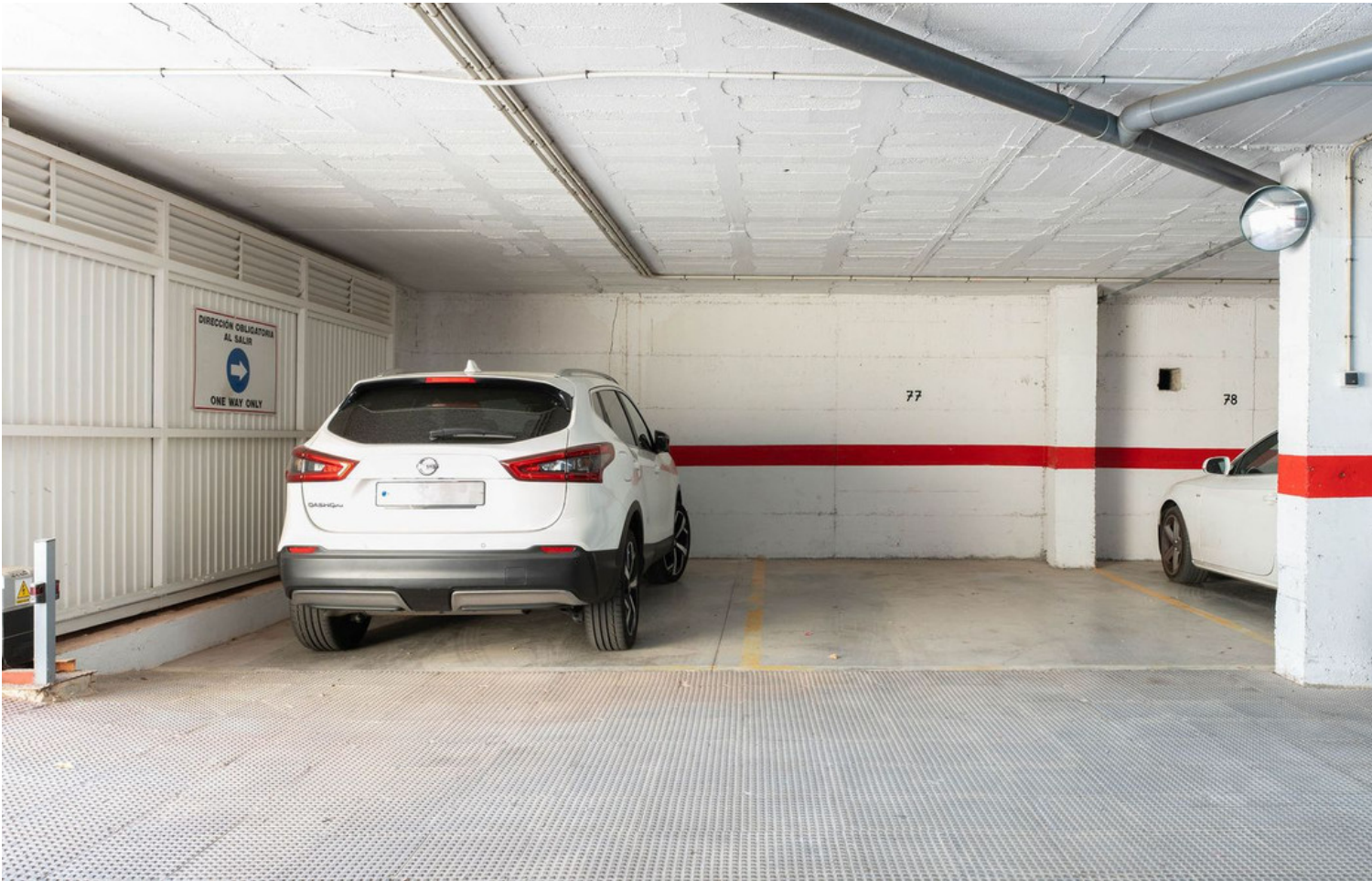






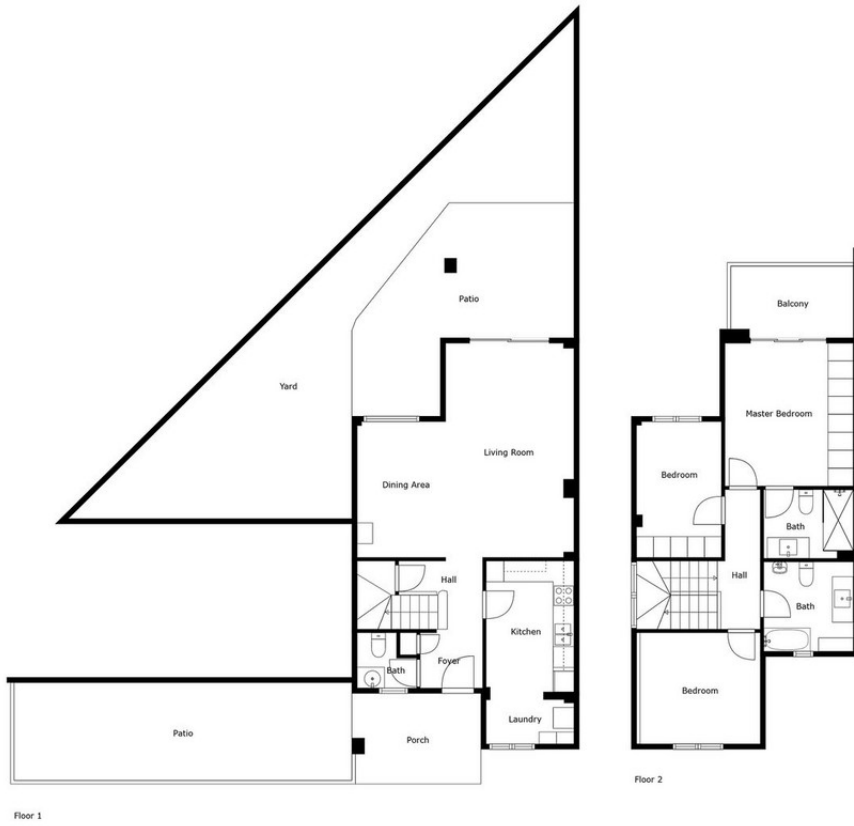












Floor 1

Floor 2

Measurements Calculated Are Deemed Highly Reliable But Are Not Guaranteed