

Sales - Apartment - Benalmadena Costa

998.000€

Benalmadena Costa

Apartment

Community: 2,964 EUR / year IBI: 843 EUR / year

Rubbish: 91 EUR / year



3



3



149 m2

Amazing duplex Penthouse in the heart of Benalmadena only 400m from the beach. Spacious and bright 3 bedroom and 3 bathroom apartment with sea and mountain views as well as a private jacuzzi. Energy rating A due to solar panels and aerothermia cooling and heating system. Two garage spaces with a charging point for an electric vehicle. Neff, Miele and Bosch appliances and designer furniture. Underfloor heating in bathrooms and private elevator for one person in the apartment. Community has a swimming pool, sauna and gym. Built by prestigious Higuera Prive. A must see for anyone looking for quality luxury living on the Costa del Sol. Benalmadena Costa, Costa del Sol. 3 Bedrooms, 3 Bathrooms, Built 149 m², Terrace 56 m². Setting : Commercial Area, Village, Close To Port, Close To Sea, Close To Town, Close To Schools, Close To Marina, Urbanisation. Orientation : South East, West. Condition : Excellent, New Construction. Pool : Communal. Climate Control : Air Conditioning, Hot A/C, Cold A/C, U/F/H Bathrooms. Features : Covered Terrace, Lift, Fitted Wardrobes, Near Transport, Private Terrace, WiFi, Gym, Sauna, Paddle Tennis, Storage Room, Utility Room, Ensuite Bathroom, Jacuzzi, Barbeque, Double Glazing, Domotics, Fiber Optic. Furniture : Fully Furnished. Kitchen : Fully Fitted. Garden : Communal. Security : Gated Complex, Electric Blinds, Entry Phone, Alarm System, Safe. Parking : Underground, Garage, More Than One, Private. Utilities : Electricity, Drinkable Water, Photovoltaic solar panels. Category : Cheap, Holiday Homes, Investment, Luxury, Resale.

Setting

- ✓ Commercial Area
- ✓ Village
- ✓ Close To Port
- ✓ Close To Sea
- ✓ Close To Town
- ✓ Close To Schools
- ✓ Close To Marina
- ✓ Urbanisation

Climate Control

- ✓ Air Conditioning
- ✓ Hot A/C
- ✓ Cold A/C
- ✓ U/F/H Bathrooms

Garden

- ✓ Communal

Category

- ✓ Cheap
- ✓ Holiday Homes
- ✓ Investment
- ✓ Luxury
- ✓ Resale

Orientation

- ✓ South East
- ✓ West

Features

- ✓ Covered Terrace
- ✓ Lift
- ✓ Fitted Wardrobes
- ✓ Near Transport
- ✓ Private Terrace
- ✓ WiFi
- ✓ Gym
- ✓ Sauna
- ✓ Paddle Tennis
- ✓ Storage Room
- ✓ Utility Room
- ✓ Ensuite Bathroom
- ✓ Jacuzzi
- ✓ Barbeque
- ✓ Double Glazing
- ✓ Domotics
- ✓ Fiber Optic

Security

- ✓ Gated Complex
- ✓ Electric Blinds
- ✓ Entry Phone
- ✓ Alarm System
- ✓ Safe

Condition

- ✓ Excellent
- ✓ New Construction

Furniture

- ✓ Fully Furnished

Parking

- ✓ Underground
- ✓ Garage
- ✓ More Than One
- ✓ Private

Pool

- ✓ Communal

Kitchen

- ✓ Fully Fitted

Utilities

- ✓ Electricity
- ✓ Drinkable Water
- ✓ Photovoltaic solar panels













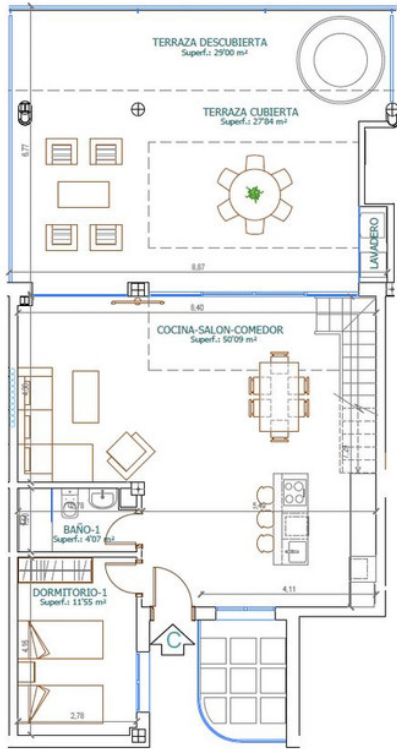




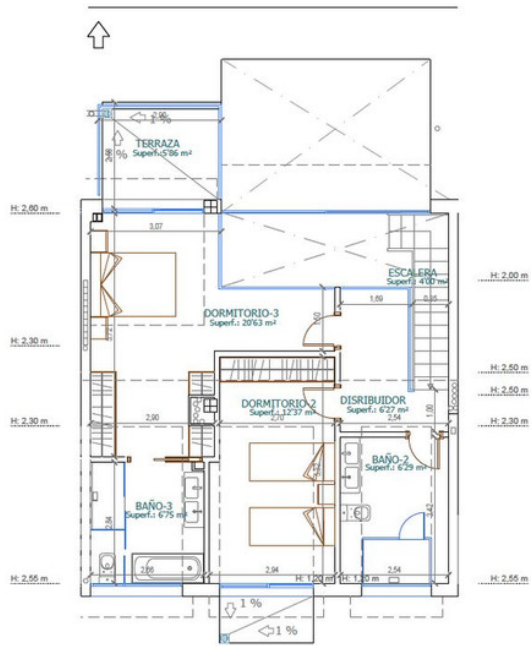




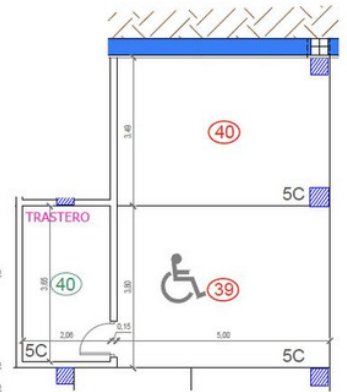




PLANTA BAJA



PIANTA AI TA



APARCAMIENTOS Y TRASTERO

SUPERFICIE CONSTRUIDA VIVIENDA	
SUPERFICIE DE VIVIENDA	140,91 m ²
SUPERFICIE DE TERRAZA	62,70 m ²
SUPERFICIE TOTAL	203,61 m²
SUPERFICIE ÚTIL ANEJOS	
SUP. APARCAMIENTO Nº39 (Garaje -1)	19,00 m ²
SUP. APARCAMIENTO Nº40 (Garaje -1)	17,05 m ²
SUP. TRASTERO Nº40 (Garaje -1)	7,53 m ²
SUPERFICIE TOTAL	43,58 m²