

## Sales - House - Benalmadena

# 1.875.000€

**Benalmadena**

**House**

**Community: 960 EUR / year**

**IBI: 2,816 EUR / year**

**Rubbish: 348 EUR / year**



**6**



**5**



**467 m2**



**1344 m2**

Villa for Sale in La Capellania, Benalmádena - Stunning Sea Views! This stunning property offers the perfect combination of luxury, comfort, and convenience in one of the most prestigious areas of Costa del Sol. Whether you're looking for a spacious family home or an investment opportunity, this villa has it all! La Capellania - El Higuero, Costa del Sol - Two houses on one plot - ideal for a large family, guests, or rental opportunities. - Sea views from both houses. - Plot Size: 1,700 sqm - Main House: 300 sqm - Casita: 140 sqm - Swimming Pool: x 4 meters, located between the two houses. - Beautiful Garden with variety of fruit trees (lemon, orange, avocado, grapefruit, etc.). - Internet available in both houses and throughout the plot. - Convenient Location: - Beach: 10 minutes' walk - Shops & Restaurants: 10 minutes' walk Main House - Bedrooms: 3 - Bathrooms: 3 - Features: - Central A/C with additional A/C in bedrooms - Office, living room, dining area - Fully equipped kitchen - Large basement parking for over 4 cars Casita - Bedrooms: 3 - Bathrooms: 2 - Features: - A/C in all bedrooms - Living room - Fully equipped kitchen - Laundry room with washing and drying machines - Large Carport for 2 cars. Contact for More Information or to Schedule a Viewing: Don't miss this rare opportunity to own a unique villa in La Capellania!





















































































































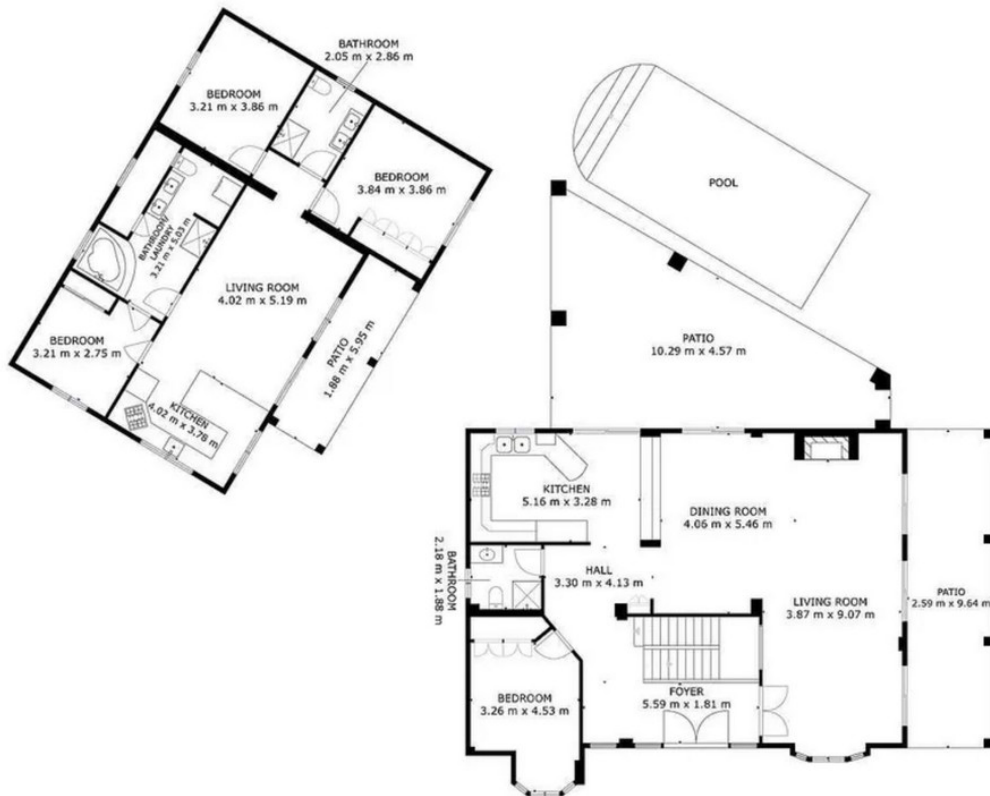










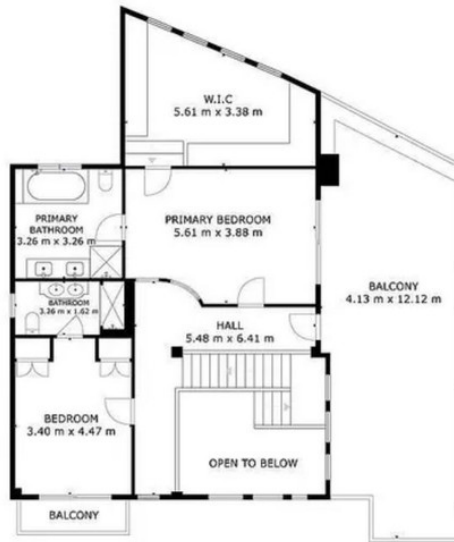


GROSS INTERNAL AREA  
 FLOOR 1: 233 m<sup>2</sup>, FLOOR 2: 101 m<sup>2</sup>  
 EXCLUDED AREAS: GARAGE: 88 m<sup>2</sup>, PATIO: 83 m<sup>2</sup>, BALCONY: 48 m<sup>2</sup>  
 TOTAL: 334 m<sup>2</sup>  
 SIZES AND DIMENSIONS ARE APPROXIMATE, ACTUAL MAY VARY.

FLOOR 1

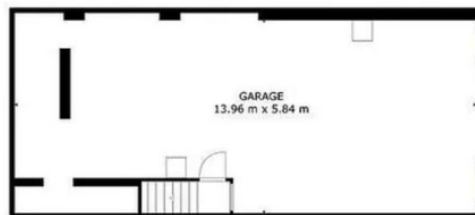






GROSS INTERNAL AREA  
 FLOOR 1: 233 m<sup>2</sup>, FLOOR 2: 101 m<sup>2</sup>  
 EXCLUDED AREAS: GARAGE: 88 m<sup>2</sup>, PATIO: 83 m<sup>2</sup>, BALCONY: 48 m<sup>2</sup>  
 TOTAL: 334 m<sup>2</sup>  
SIZES AND DIMENSIONS ARE APPROXIMATE, ACTUAL MAY VARY.

FLOOR 2



GROSS INTERNAL AREA  
 FLOOR 1: 233 m<sup>2</sup>, FLOOR 2: 101 m<sup>2</sup>  
 EXCLUDED AREAS: GARAGE: 88 m<sup>2</sup>, PATIO: 83 m<sup>2</sup>, BALCONY: 48 m<sup>2</sup>  
 TOTAL: 334 m<sup>2</sup>  
SIZES AND DIMENSIONS ARE APPROXIMATE, ACTUAL MAY VARY.

BASEMENT 1

