

## Sales - House - El Chaparral

# 1.110.000€

El Chaparral

House



4



4



159 m2



133 m2

**\*\*Exclusive property under construction now for resale at El Chaparral Golf\*\*** We are fortunate to have acquired this exciting property for resale in the sought-after complex at El Chaparral Golf. Construction has begun and is expected to be completed by the end of 2026. Property No. 4 in Phase 1 is one of the best-located properties in the complex, oriented to the south-southwest, providing optimal sunlight and fantastic sea views. The property is 159 m<sup>2</sup> Terrace of 42 m<sup>2</sup> Garden of 133 m<sup>2</sup> It is still possible to choose from the additional options that the developer will soon offer, such as a pool and an elevator. Do not hesitate to contact us for a demonstration of the construction site. This building located at El Chaparral is an exclusive complex consisting of 69 villas, where the first phase includes 23 villas. This paradise in the heart of the Costa del Sol combines the natural beauty of the surroundings with a passion for golf, water sports, and the "Slow Living" lifestyle. **\*\*Property Features:\*\*** - Exclusive townhouse complex - Energy-efficient homes - Fantastic view of the sea and the gulf - South-facing orientation - Large terraces - Bright interior - Italian designed kitchens - Spacious bedrooms and bathrooms - Private garage - Solar heating - Storm windows - Air conditioning - Surround sound - Fireplace - Rain shower heads - Built-in toilets - Washing machine and dryer - Dishwasher - Fitness center - Spa - Turkish bath - Shared swimming pool - Barbecue area - Concierge services - Coworking area - Exclusive golf benefits - Go golfing **\*\*Common areas:\*\*** - 2 swimming pools - Hammam - Sauna - Fully equipped fitness room - Coworking area - Barbecue area and much more **\*\*Optional Upgrades:\*\*** Make your home completely unique with the option to buy: - Mini pool in the garden - Installation of charging stations for vehicles - Home automation package - Color change for laminated wooden floorboards - Replacement of floorboards with large-format stoneware - Color change for kitchen worktops and units - Upgrade from washing machine to washer/dryer combo - Elevators depending on house type **\*\*Ideal Location:\*\*** - 25 minutes from Malaga airport - 10 minutes from Fuengirola Station - 40 minutes from central Malaga - 23 minutes from Marbella - 30 minutes from Puerto Banús - 55 minutes from Sotogrande Grab the chance now and become part of the luxurious lifestyle. Contact us for more information and to secure your place in this exclusive complex.

### Setting

- ✓ Frontline Golf
- ✓ Close To Sea
- ✓ Close To Town

### Climate Control

- ✓ Air Conditioning
- ✓ Central Heating
- ✓ U/F/H Bathrooms

### Kitchen

- ✓ Fully Fitted

### Category

- ✓ Luxury

### Orientation

- ✓ South East

### Views

- ✓ Sea
- ✓ Golf
- ✓ Panoramic
- ✓ Garden

### Garden

- ✓ Private

### Condition

- ✓ Excellent
- ✓ New Construction

### Features

- ✓ Covered Terrace
- ✓ Fitted Wardrobes
- ✓ Private Terrace
- ✓ Gym
- ✓ Marble Flooring

### Security

- ✓ Electric Blinds

### Pool

- ✓ Communal

### Furniture

- ✓ Not Furnished

### Parking

- ✓ Private













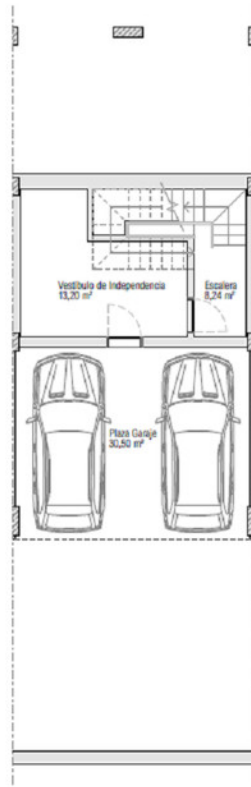


SOLEIA LIVING El Chaparral  
MÚJAS (MÁLAGA)

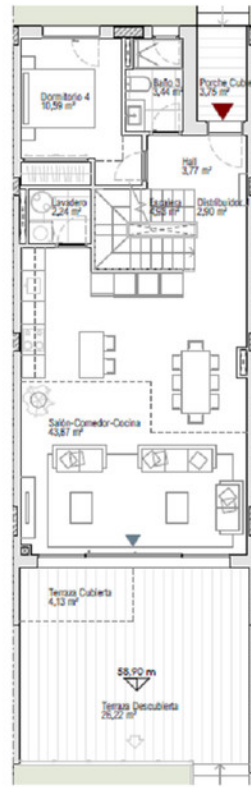
**VIVIENDA 03**  
TIPO A3  
4 DORMITORIOS

SUPERFICIES

Parcela Privativa	175,36 m <sup>2</sup>
Jardín	54,01 m <sup>2</sup>
Superficie Construida Vivienda	158,31 m <sup>2</sup>
Superficie Construida Sótano	58,94 m <sup>2</sup>
Superficie Construida Terrazas	42,03 m <sup>2</sup>
<b>Construida Total</b>	<b>259,28 m<sup>2</sup></b>
Superficies BOJA	
Superficie BOJA Útil	145,53 m <sup>2</sup>
Superficie BOJA Construida	174,14 m <sup>2</sup>



PLANTA SÓTANO



PLANTA BAJA



PLANTA ALTA





SOLEIA LIVING El Chapparal  
MIJAS (MÁLAGA)

## VIVIENDA 04

TIPO A3  
4 DORMITORIOS

### SUPERFICIES

Parcela Privativa	174,28 m <sup>2</sup>
Jardín	54,93 m <sup>2</sup>
Superficie Construida Vivienda	158,31 m <sup>2</sup>
Superficie Construida Sótano	38,94 m <sup>2</sup>
Superficie Construida Terrazas	42,03 m <sup>2</sup>
<b>Construida Total</b>	<b>239,28 m<sup>2</sup></b>
<b>Superficies BOJA</b>	
Superficie BOJA Util	145,83 m <sup>2</sup>
Superficie BOJA Construida	174,14 m <sup>2</sup>

