

Sales - Apartment - Elviria

375.000€

Elviria

Apartment

Community: 2,388 EUR / year IBI: 936 EUR / year

Rubbish: 93 EUR / year



2



2



121 m2

BEAUTIFUL PENTHOUSE DUPLEX WITH PANORAMIC SEA VIEWS IN ELVIRIA Discover this exceptional 2-bedroom, 2-bathroom penthouse duplex located in a peaceful urbanisation in upper Elviria. This property combines modern comfort with breathtaking views, offering a perfect retreat on the Costa del Sol. The highlight of this penthouse is the expansive wrap-around terrace on the main floor, where you can enjoy panoramic vistas, including stunning sea views. Whether relaxing, dining al fresco, or entertaining, this terrace provides a spectacular outdoor living experience. Inside, the penthouse features a bright and spacious layout with well-appointed rooms. The property includes a private space in an underground garage and a large storage room, adding convenience and practicality. Situated just a short drive from Marbella and all local amenities, this penthouse offers the perfect balance of tranquility and accessibility. Whether as a permanent residence, a holiday home, or an investment, this is a unique opportunity to own a piece of paradise in Elviria. Short term holiday rentals are allowed. Don't miss this incredible opportunity—contact us today to schedule your visit and experience this stunning penthouse duplex in Elviria for yourself! Penthouse Duplex, Elviria, Costa del Sol. 2 Bedrooms, 2 Bathrooms, Built 121 m². Setting : Village, Close To Golf, Close To Shops, Close To Sea, Urbanisation. Orientation : East, South, West. Condition : Good. Pool : Communal. Climate Control : Air Conditioning, Hot A/C, Cold A/C. Views : Sea, Mountain, Panoramic, Garden, Urban. Features : Covered Terrace, Lift, Fitted Wardrobes, Near Transport, Private Terrace, Storage Room, Utility Room, Ensuite Bathroom. Furniture : Fully Furnished. Kitchen : Fully Fitted. Garden : Communal. Security : Gated Complex. Parking : Underground, Garage, Covered, Private. Utilities : Electricity. Category : Holiday Homes, Investment, Reduced.

Setting

- ✓ Village
- ✓ Close To Golf
- ✓ Close To Shops
- ✓ Close To Sea
- ✓ Urbanisation

Orientation

- ✓ East
- ✓ South
- ✓ West

Condition

- ✓ Good

Pool

- ✓ Communal

Climate Control

- ✓ Air Conditioning
- ✓ Hot A/C
- ✓ Cold A/C

Views

- ✓ Sea
- ✓ Mountain
- ✓ Panoramic
- ✓ Garden
- ✓ Urban

Features

- ✓ Covered Terrace
- ✓ Lift
- ✓ Fitted Wardrobes
- ✓ Near Transport
- ✓ Private Terrace
- ✓ Storage Room
- ✓ Utility Room
- ✓ Ensuite Bathroom

Furniture

- ✓ Fully Furnished

Kitchen

- ✓ Fully Fitted

Garden

- ✓ Communal

Security

- ✓ Gated Complex

Parking

- ✓ Underground
- ✓ Garage
- ✓ Covered
- ✓ Private

Utilities

- ✓ Electricity

Category

- ✓ Holiday Homes
- ✓ Investment
- ✓ Reduced

























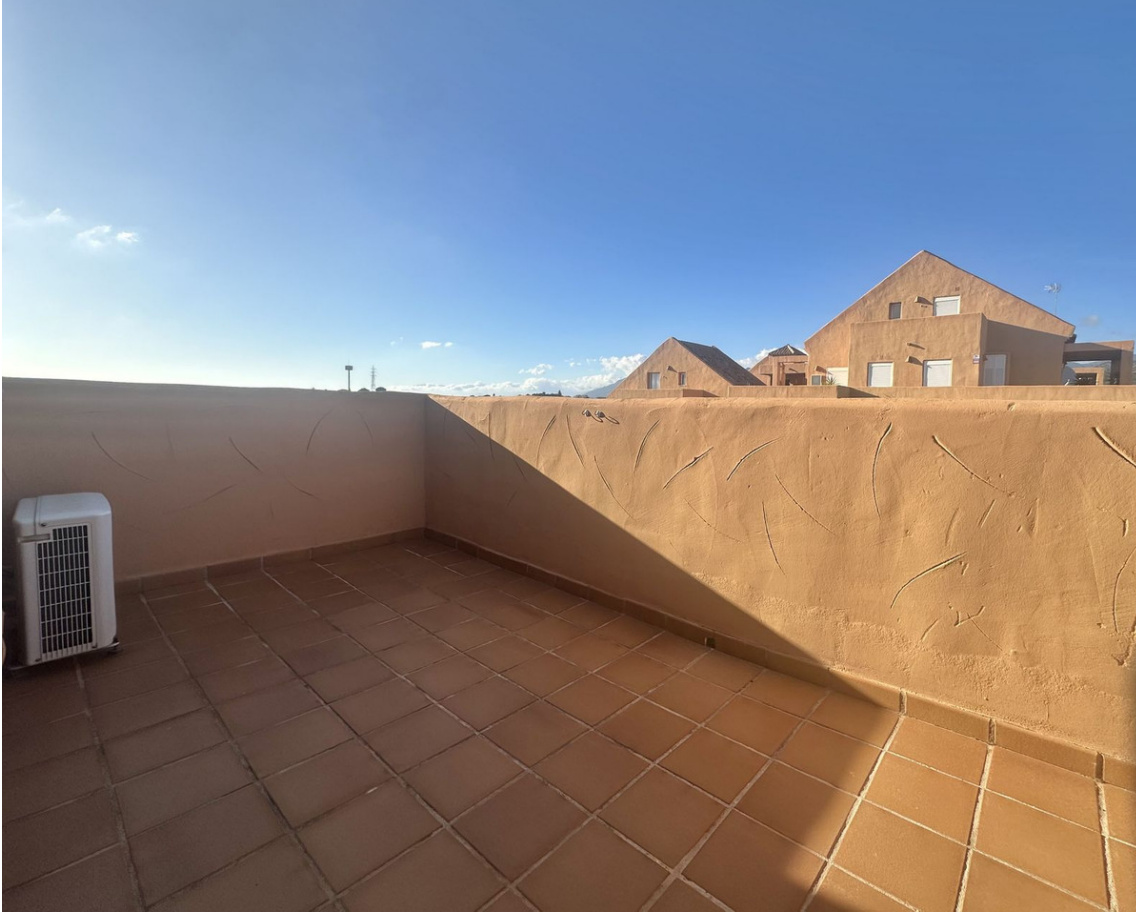










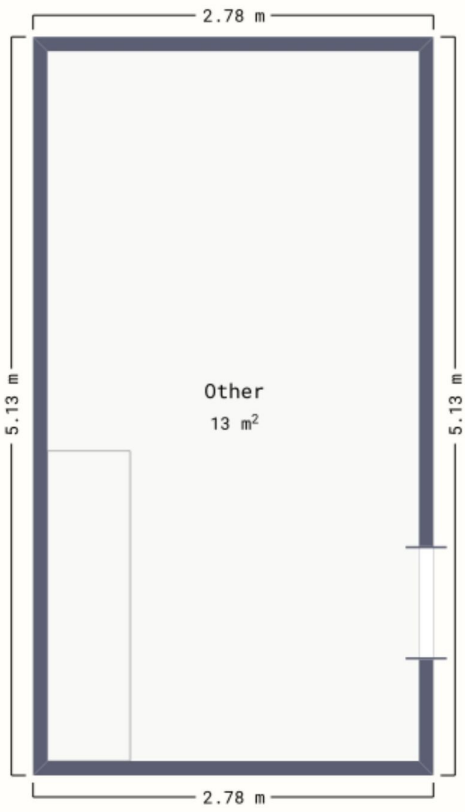








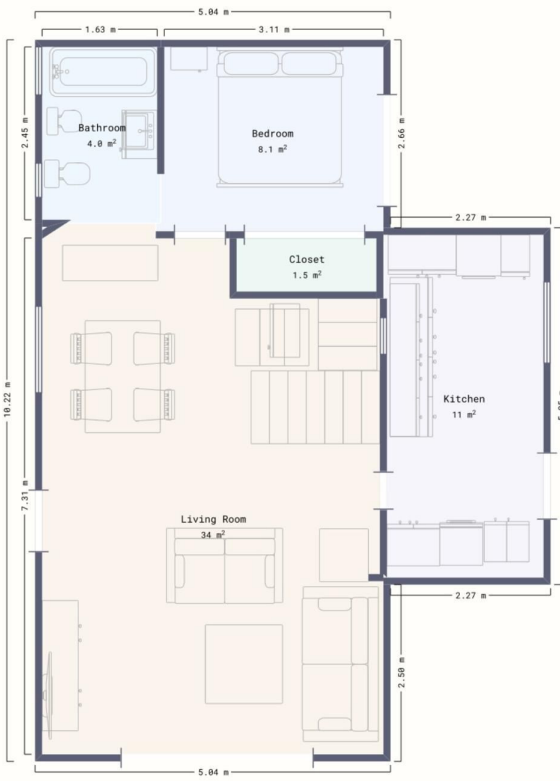








Approximately 63 m² total



Approximately 33 m² total

