

## Sales - House - Benahavís

# 2.150.000€

**Benahavís**

**House**

**Community: 2,256 EUR / year IBI: 1,761 EUR / year**

**Rubbish: 18 EUR / year**



**5**



**4**



**761 m2**



**1217 m2**

Luxury Andalusian Villa for Sale in La Alquería, Benahavís Discover an exceptional Andalusian villa that seamlessly blends luxury, privacy, and breathtaking views in the prestigious area of La Alquería, Benahavís. This exquisite property offers a perfect combination of elegance and comfort, making it an ideal choice for discerning buyers. Location La Alquería is an exclusive residential community of building plots and villas centred around the Atalaya Golf and Country Club in Benahavís. Close to the bilingual Colegio Atalaya and Marbella Montessori School, the Mercadona supermarket on the Benahavís road, and is well served by restaurants and bars. Estepona, Puerto Banús, and the centre of Marbella are all less than 15 minutes away by car. Property Features Outdoor Oasis: Enjoy year-round relaxation with a heated pool, waterfall and jacuzzi, all set in beautifully landscaped grounds. Spacious Living: The villa boasts five generously sized double bedrooms, four of which have en-suite bathrooms. The master suite is a standout, featuring a vaulted ceiling and a round jacuzzi bathtub. Elegant Interiors: A bespoke kitchen, Italian marble finishes, and custom-designed furniture showcase the villa's sophisticated style and attention to detail. Ample Parking & Versatility: A secure garage accommodates up to five cars, with additional parking available outside. The expansive basement offers potential for a home cinema or games room. An elevator conveniently connects all levels. Stunning Views and Security The views from the bedrooms, outdoor areas, and terraces are truly breathtaking, offering stunning panoramas of the sea and the iconic La Concha Mountain Your peace of mind is assured with top-tier security features, including a video intercom system, safety glass, and 24-hour surveillance, 2 security cars driving around the urbanization from dusk to dawn. An Exclusive Lifestyle This magnificent villa offers refined living in one of the Costa del Sol's most sought-after locations. Whether you seek a tranquil retreat or a vibrant hub for entertaining, this property delivers a lifestyle of unparalleled luxury. This property comes equipped with cutting-edge AI technology: a digital personal concierge designed to make your life easier. With just a few taps on the screen, you can effortlessly book services like a driver, dry cleaning, or house cleaning. Additionally, this system serves as a valuable tool for managing rentals, streamlining the process for both you and your guests. It's all about convenience and enhancing your living experience. For more information or to schedule a viewing, please contact us today.

**Setting**

- ✓ Close To Golf

**Climate Control**

- ✓ Air Conditioning
- ✓ Fireplace

**Kitchen**

- ✓ Fully Fitted

**Category**

- ✓ Resale

**Orientation**

- ✓ West

**Views**

- ✓ Sea
- ✓ Mountain
- ✓ Golf

**Garden**

- ✓ Private
- ✓ Easy Maintenance

**Condition**

- ✓ Excellent

**Features**

- ✓ Covered Terrace
- ✓ Lift
- ✓ Fitted Wardrobes
- ✓ Private Terrace
- ✓ Solarium
- ✓ Games Room
- ✓ Storage Room
- ✓ Ensuite Bathroom
- ✓ Access for people with reduced mobility
- ✓ Marble Flooring
- ✓ Jacuzzi
- ✓ Bar
- ✓ Basement

**Security**

- ✓ Electric Blinds
- ✓ Entry Phone
- ✓ Alarm System
- ✓ Safe

**Pool**

- ✓ Private
- ✓ Heated

**Furniture**

- ✓ Fully Furnished

**Parking**

- ✓ Garage
- ✓ Private

























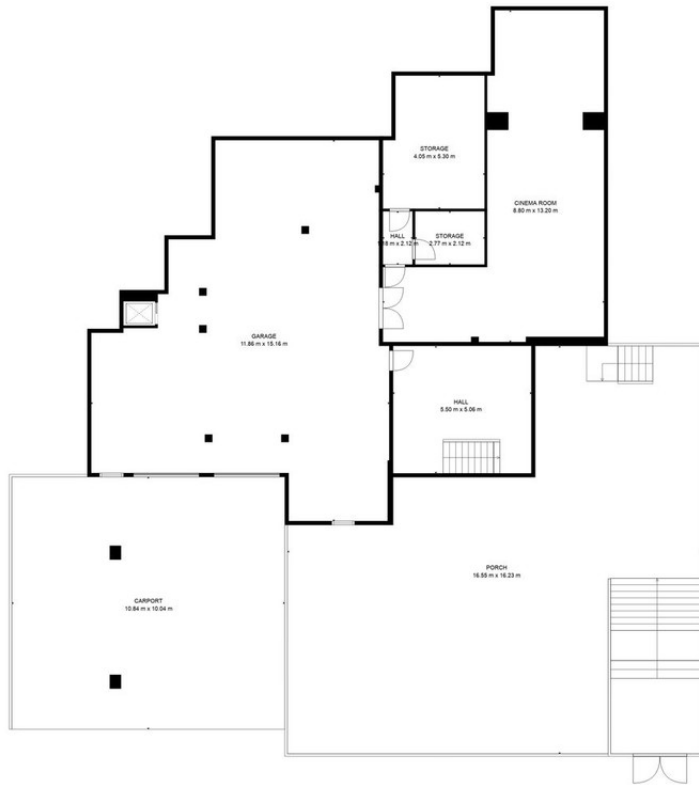
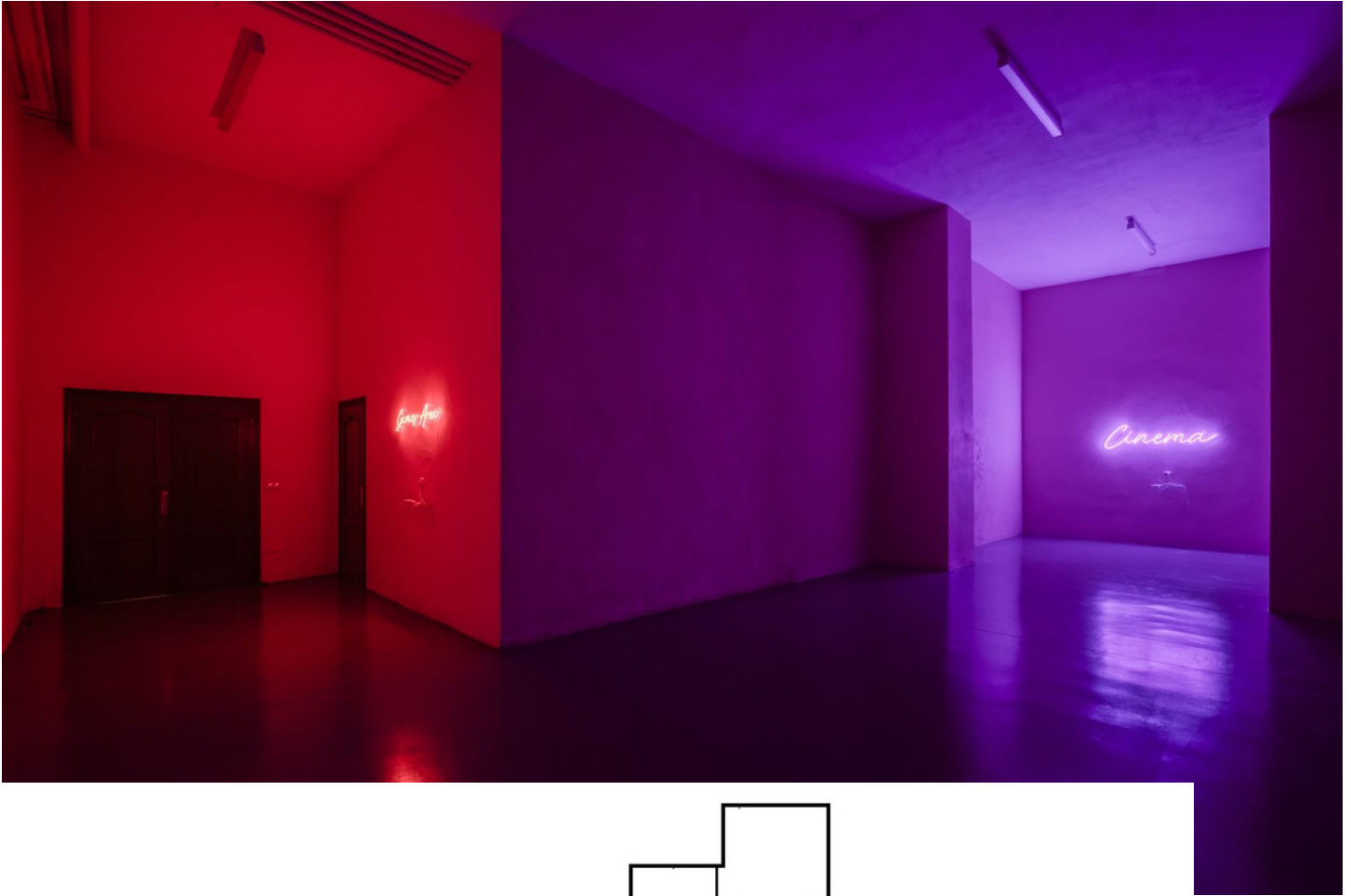






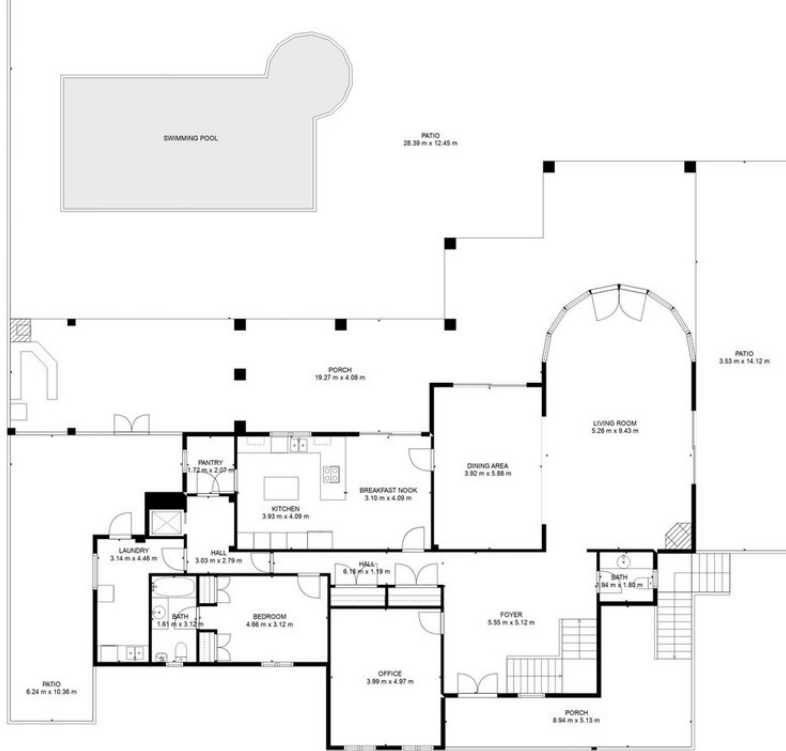






**TOTAL: 461 m<sup>2</sup>**  
 FLOOR 0: 108 m<sup>2</sup>, FLOOR 1: 207 m<sup>2</sup>, FLOOR 2: 146 m<sup>2</sup>, FLOOR 3: 0 m<sup>2</sup>  
 EXCLUDED AREAS: GARAGE: 131 m<sup>2</sup>, STORAGE: 26 m<sup>2</sup>, PORCH: 351 m<sup>2</sup>,  
 CARPORT: 109 m<sup>2</sup>, PATIO: 334 m<sup>2</sup>, BALCONY: 74 m<sup>2</sup>,  
 OPEN TO BELOW: 11 m<sup>2</sup>, TERRACE: 44 m<sup>2</sup>

FLOOR PLAN CREATED BY CUBICASA APP. MEASUREMENTS DEEMED HIGHLY RELIABLE BUT NOT GUARANTEED.



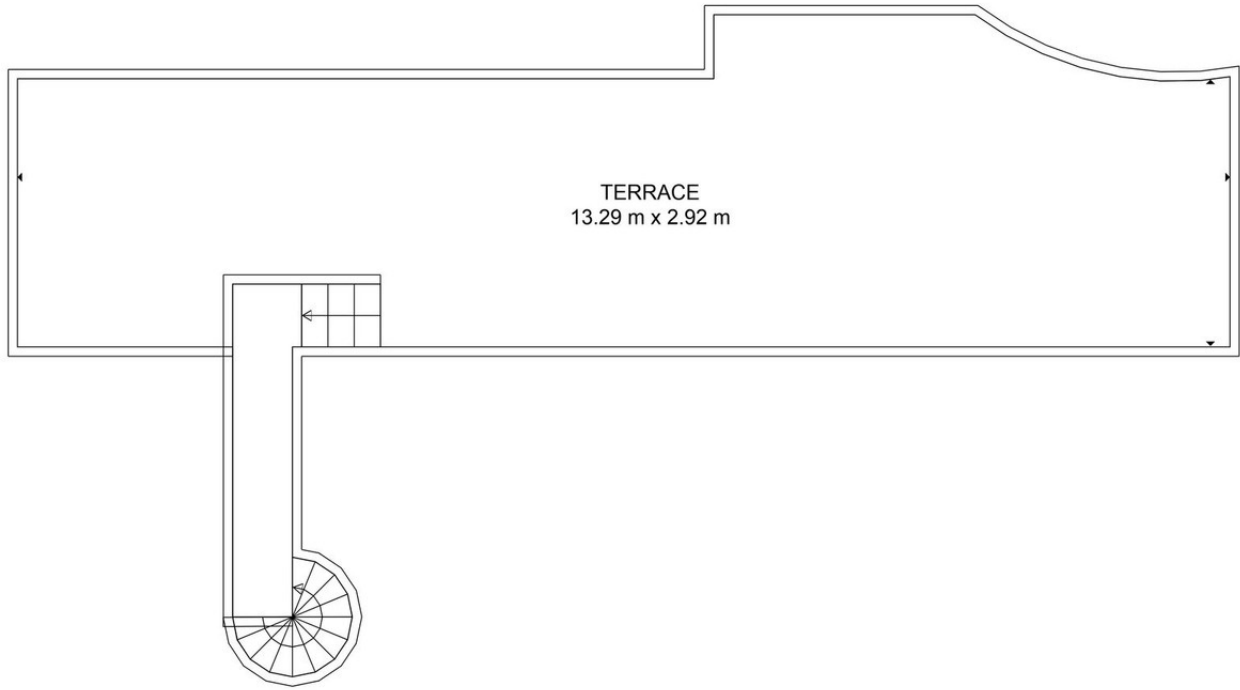
**TOTAL: 461 m<sup>2</sup>**  
 FLOOR 0: 108 m<sup>2</sup>, FLOOR 1: 207 m<sup>2</sup>, FLOOR 2: 146 m<sup>2</sup>, FLOOR 3: 0 m<sup>2</sup>  
 EXCLUDED AREAS: GARAGE: 131 m<sup>2</sup>, STORAGE: 26 m<sup>2</sup>, PORCH: 351 m<sup>2</sup>,  
 CARPORT: 109 m<sup>2</sup>, PATIO: 334 m<sup>2</sup>, BALCONY: 74 m<sup>2</sup>,  
 OPEN TO BELOW: 11 m<sup>2</sup>, TERRACE: 44 m<sup>2</sup>

FLOOR PLAN CREATED BY CUBICASA APP. MEASUREMENTS DEEMED HIGHLY RELIABLE BUT NOT GUARANTEED.



**TOTAL: 461 m<sup>2</sup>**  
 FLOOR 0: 108 m<sup>2</sup>, FLOOR 1: 207 m<sup>2</sup>, FLOOR 2: 146 m<sup>2</sup>, FLOOR 3: 0 m<sup>2</sup>  
 EXCLUDED AREAS: GARAGE: 131 m<sup>2</sup>, STORAGE: 26 m<sup>2</sup>, PORCH: 351 m<sup>2</sup>,  
 CARPORT: 109 m<sup>2</sup>, PATIO: 334 m<sup>2</sup>, BALCONY: 74 m<sup>2</sup>,  
 OPEN TO BELOW: 11 m<sup>2</sup>, TERRACE: 44 m<sup>2</sup>

FLOOR PLAN CREATED BY CUBICASA APP. MEASUREMENTS DEEMED HIGHLY RELIABLE BUT NOT GUARANTEED.



**TOTAL: 461 m<sup>2</sup>**  
 FLOOR 0: 108 m<sup>2</sup>, FLOOR 1: 207 m<sup>2</sup>, FLOOR 2: 146 m<sup>2</sup>, FLOOR 3: 0 m<sup>2</sup>  
 EXCLUDED AREAS: GARAGE: 131 m<sup>2</sup>, STORAGE: 26 m<sup>2</sup>, PORCH: 351 m<sup>2</sup>,  
 CARPORT: 109 m<sup>2</sup>, PATIO: 334 m<sup>2</sup>, BALCONY: 74 m<sup>2</sup>,  
 OPEN TO BELOW: 11 m<sup>2</sup>, TERRACE: 44 m<sup>2</sup>

FLOOR PLAN CREATED BY CUBICASA APP. MEASUREMENTS DEEMED HIGHLY RELIABLE BUT NOT GUARANTEED.



