

Long Term Rental - Commercial - La Mairena

4.500€ / Month

La Mairena

Commercial



660 m²

Commercial Premises, La Mairena, Costa del Sol. Built 660 m². Setting : Close To Golf, Close To Town, Close To Schools, Urbanisation. Orientation : West. Condition : Good. Category : Resale.

Setting

- ✓ Close To Golf
- ✓ Close To Town
- ✓ Close To Schools
- ✓ Urbanisation

Orientation

- ✓ West

Condition

- ✓ Good

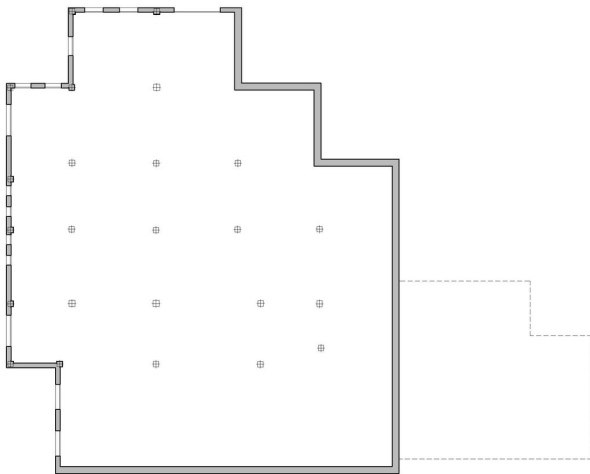
Category

- ✓ Resale









Planta cota -348