



Sales - House - Estepona
2.450.000€

www.mibgroup.es
+34 662 58 96 58
info@mibgroup.es

IBI: 2,350 EUR / year



5



5



733 m2



6860 m2

FANTASTIC VILLA OF HIGH ARCHITECTURAL LEVEL, on three floors with impressive panoramic views of the Mediterranean Sea and the mountains. Very exceptional details, such as its own winery, private tennis court, swimming pool with waterfall, park-like garden with several fountains and orange trees. It also offers its own elevator, a large living room with access to the representative terrace, ideal for those who receive a lot of visitors. The villa is located in Estepona, a great opportunity, tranquility and, at the same time, being close to services. The visit is highly recommended.

Setting

- ✓ Town
- ✓ Village
- ✓ Close To Port
- ✓ Close To Shops
- ✓ Close To Sea
- ✓ Close To Town
- ✓ Close To Schools
- ✓ Marina
- ✓ Close To Marina
- ✓ Urbanisation

Orientation

- ✓ East
- ✓ South

Condition

- ✓ Good

Pool

- ✓ Private

Climate Control

- ✓ Air Conditioning
- ✓ Hot A/C
- ✓ Cold A/C
- ✓ Fireplace

Views

- ✓ Sea
- ✓ Mountain
- ✓ Golf
- ✓ Port
- ✓ Country
- ✓ Panoramic
- ✓ Garden
- ✓ Pool
- ✓ Street

Features

- ✓ Covered Terrace
- ✓ Lift
- ✓ Fitted Wardrobes
- ✓ Near Transport
- ✓ Private Terrace
- ✓ Satellite TV
- ✓ Sauna
- ✓ Games Room
- ✓ Paddle Tennis
- ✓ Tennis Court
- ✓ Storage Room
- ✓ Utility Room
- ✓ Ensuite Bathroom
- ✓ Jacuzzi
- ✓ Bar
- ✓ Barbeque
- ✓ Double Glazing
- ✓ Basement

Furniture

- ✓ Optional

Kitchen

- ✓ Fully Fitted

Garden

- ✓ Private

Security

- ✓ Gated Complex
- ✓ Entry Phone
- ✓ Alarm System

Parking

- ✓ Garage
- ✓ Covered
- ✓ More Than One

Utilities

- ✓ Electricity
- ✓ Drinkable Water
- ✓ Telephone

Category

- ✓ Investment
- ✓ Resale













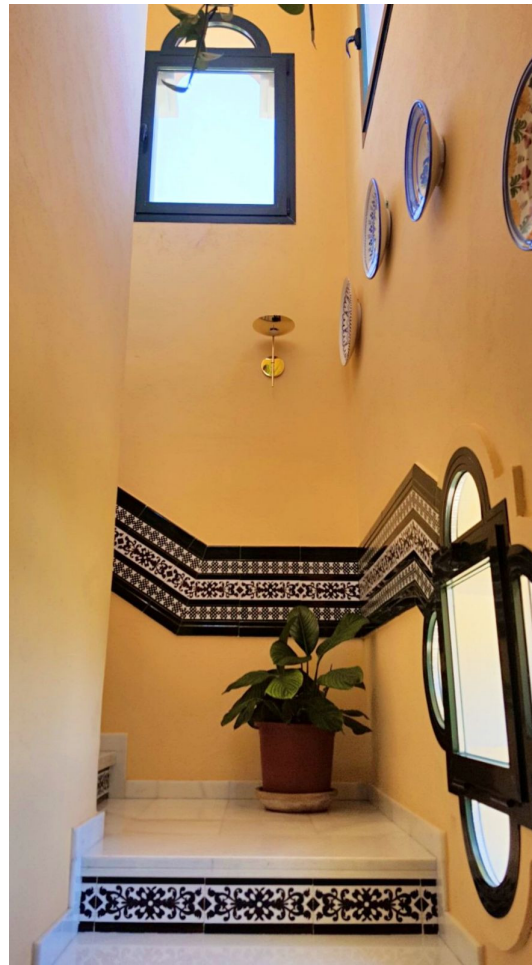














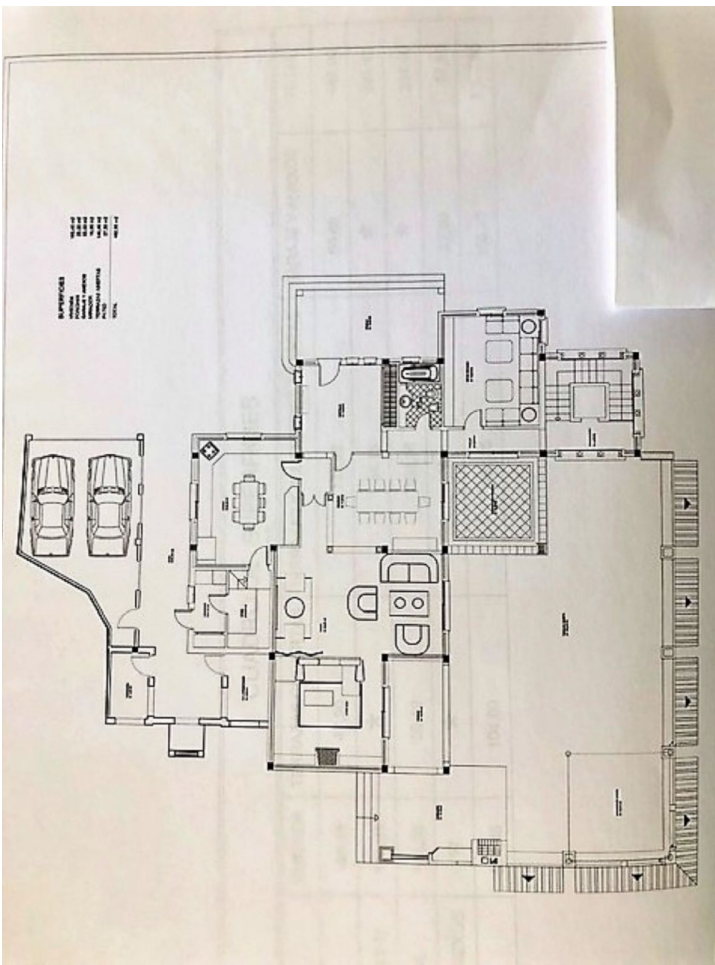


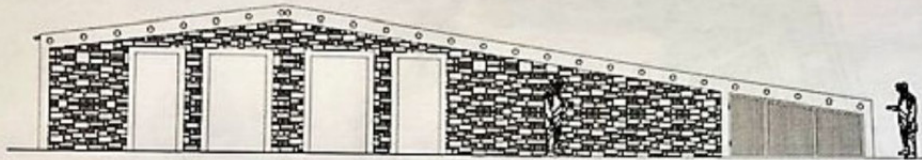






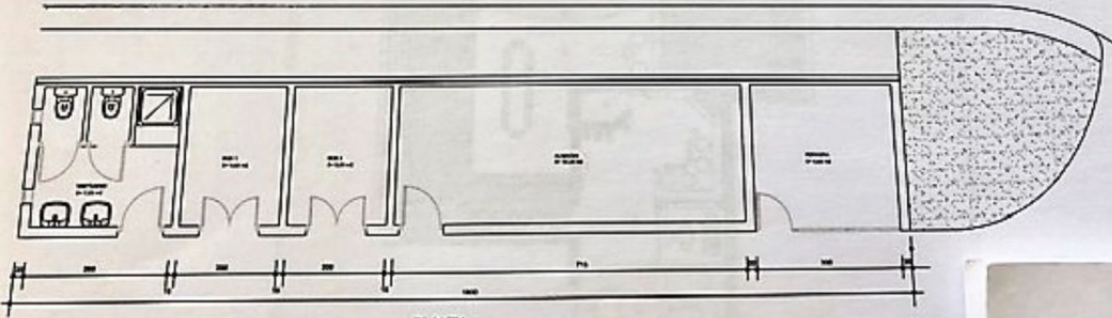






ALZADO SUR

SUPERFICIES
ALMACEN Y ANEXOS



PLANTA

CUADRO DE SUPERFICIES						
PLANTA	VIVIENDA	TERRAZAS CUBIERTAS	TERRAZAS Y SUPERFICIES ABIERTAS		GARAJE Y ANEXOS	TOTAL
			ENTR	SUR		
BAJA	190,45	47,90		173,95	50,90	462,90
DORMITORIOS (-1)	186,95	*		54,15	*	241,10
BODEGA Y SPA	144,05	56,10		134,25	*	334,40
ALMACEN Y ANEXOS	*	*		*	57,90	57,90
TOTAL	521,45	104,00		382,35	108,20	1.096,00

