

**Ref.-ID: MIBGR3501808**

**El Rosario**

**Plot**



**2400 m2**

SEA VIEW DEVELOPMENT OPPORTUNITY! Two adjoining development plots of 1200m2 each with panoramic sea views. Full project included with architects plans and planning permission approved to build two contemporary sea view villas (estimated resale value of €2.9M each based upon high spec finish). A prime site for development of 2 new sea view villas in El Rosario.

**Setting**

- ✓ Close To Golf
- ✓ Close To Shops
- ✓ Close To Sea
- ✓ Close To Schools
- ✓ Urbanisation

**Orientation**

- ✓ South East
- ✓ South

**Views**

- ✓ Sea
- ✓ Panoramic

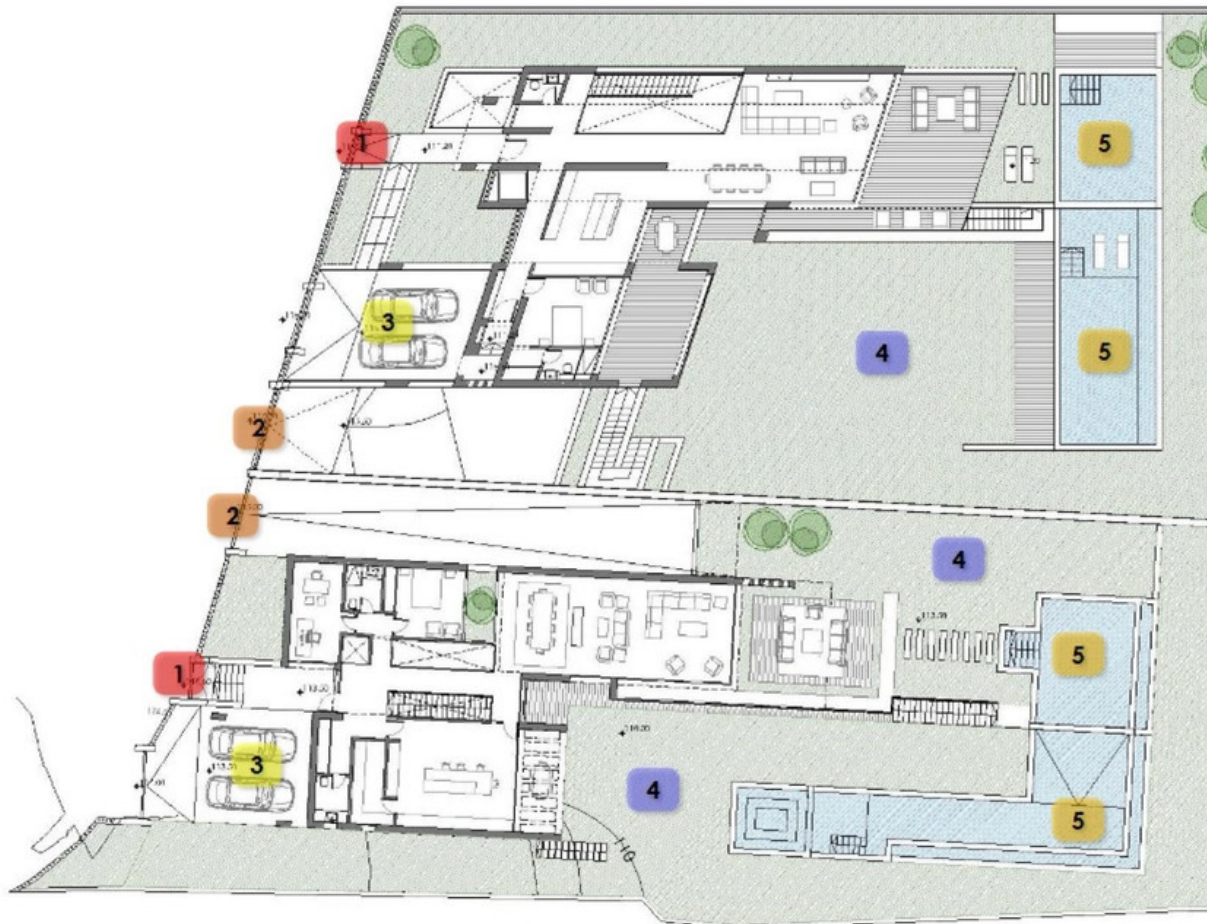
**Category**

- ✓ Investment
- ✓ With Planning Permission
- ✓ Contemporary



**PLOT**

- 1 MAIN ACCESS
- 2 PARKING ACCESS
- 3 OPEN PARKING
- 4 GARDEN
- 5 SWIMMING POOL

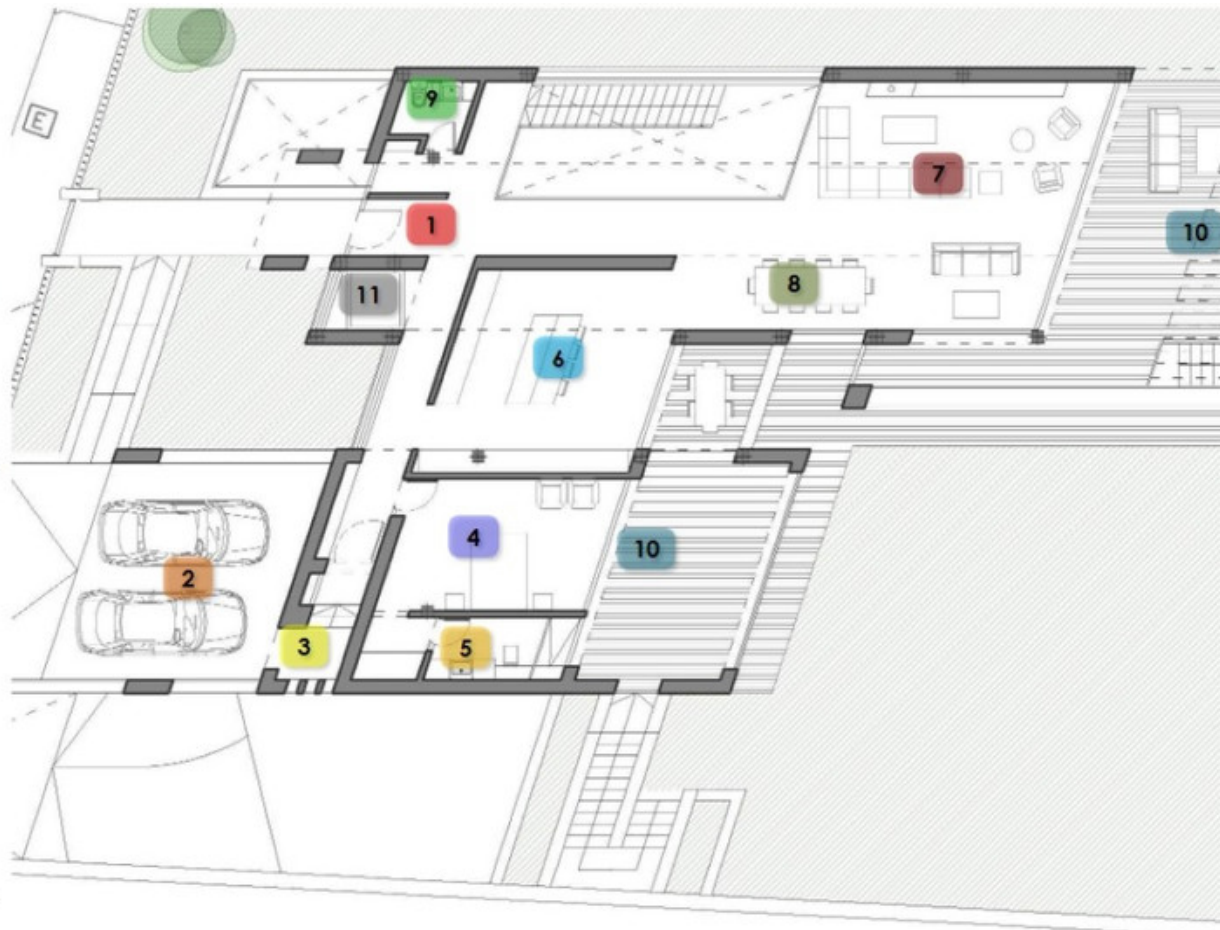






## HOUSE NORTH FIRST FLOOR

- 1 HALL
- 2 OUTSIDE PARKING
- 3 GUEST ACCESS
- 4 GUEST BEDROOM
- 5 GUEST BATHROOM
- 6 KITCHEN
- 7 LIVING ROOM
- 8 DINING ROOM
- 9 TOILET
- 10 TERRACE
- 11 LIFT CAGE
- 12 SWIMMING POOL



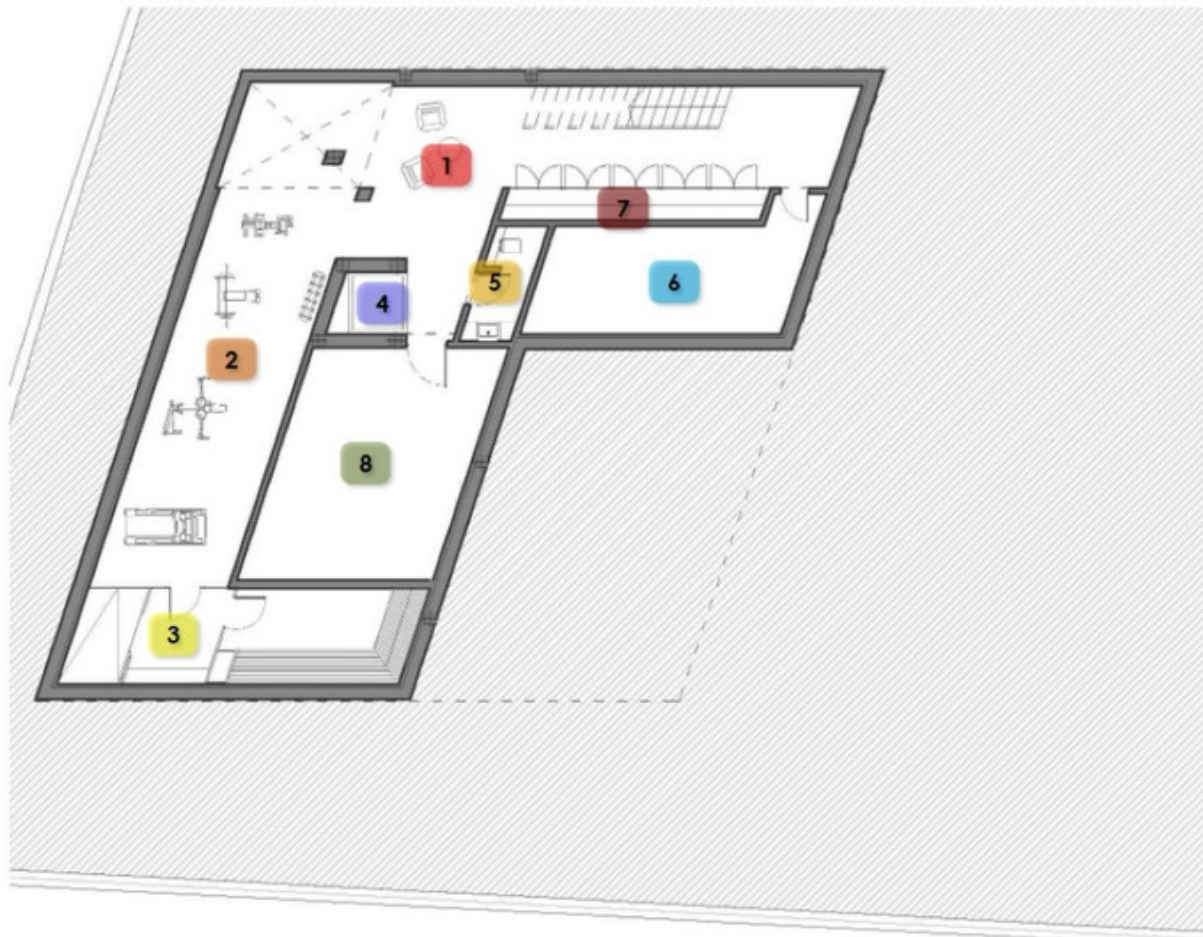
## HOUSE NORTH GROUND FLOOR

- 1 LIVING - PLAY ROOM
- 2 PARKING
- 3 BEDROOM
- 4 CLOAKROOM
- 5 BATHROOM
- 6 MASTER BEDROOM
- 7 MASTER BATHROOM
- 8 TERRACE
- 9 MACHINE ROOM
- 10 GARDEN
- 11 SWIMMING POOL



## HOUSE NORTH BASEMENT FLOOR

- 1 HALL
- 2 GYM AREA
- 3 SAUNA & SHOWER
- 4 LIFT CAGE
- 5 TOILET
- 6 CELLAR
- 7 WINE
- 8 STORAGE
- 9 SWIMMING POOL



## HOUSE SOUTH FIRST FLOOR

- 1 HALL
- 2 OUTSIDE PARKING
- 3 TOILET
- 4 CLOAKROOM
- 5 KITCHENETTE
- 6 KITCHEN
- 7 DINNING ROOM
- 8 LIVING ROOM
- 9 GUEST BEDROOM
- 10 GUEST BATHROOM
- 11 OFFICE
- 12 TERRACE
- 13 SWIMMING POOL



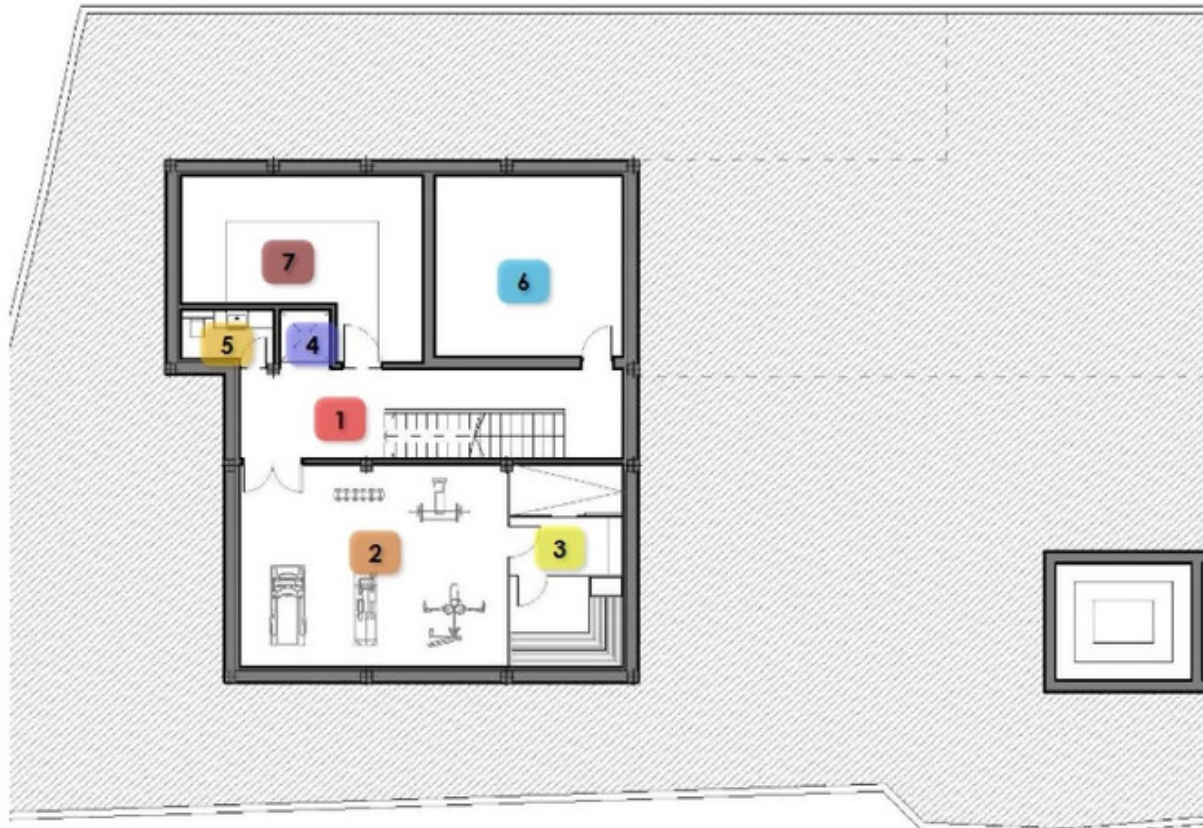
## HOUSE SOUTH GROUND FLOOR

- 1 LIVING - PLAY ROOM
- 2 BEDROOM
- 3 BATHROOM
- 4 MASTER BEDROOM
- 5 MASTER BATHROOM
- 6 MASTER WARDROBE
- 7 LANDRY
- 8 PARKING
- 9 TERRACE
- 10 GARDEN
- 11 SWIMMING POOL
- 12 MACHINE ROOM



## HOUSE SOUTH BASEMENT FLOOR

- 1 HALL
- 2 GYM AREA
- 3 SAUNA & SHOWER
- 4 LIFT CAGE
- 5 TOILET
- 6 STORAGE
- 7 MACHINE ROOM
- 8 SWIMMING POOL



# ROBARTO HOUSES

