

Ref.-ID: MIBGR3720593

Coín

Plot

IBI: 98 EUR / year



676 m2

Residential plot with project already in place in a popular urbanisation in Coín. This south facing plot has simply magnificent views of the countryside and the Mijas mountains. The plot is gently sloping, with green zones in front and to the side. The project is for a modern 2 storey villa of 218m² with 4 bedrooms, 3 bathrooms, an additional 129m² basement and a swimming pool. The buyer will have the option to personalise the house to their own tastes. Plans are available upon request; contact us for more information.

Setting

- ✓ Close To Shops
- ✓ Close To Town
- ✓ Urbanisation

Orientation

- ✓ South

Views

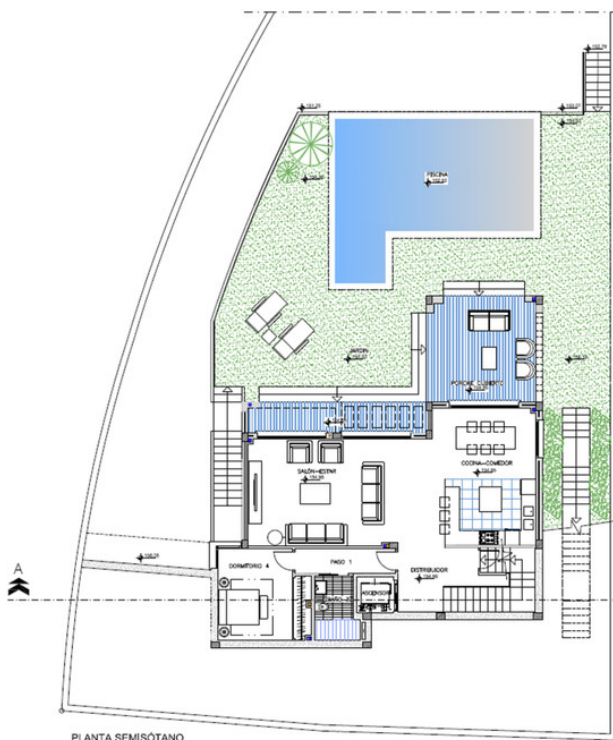
- ✓ Mountain
- ✓ Country
- ✓ Urban
- ✓ Street

Parking

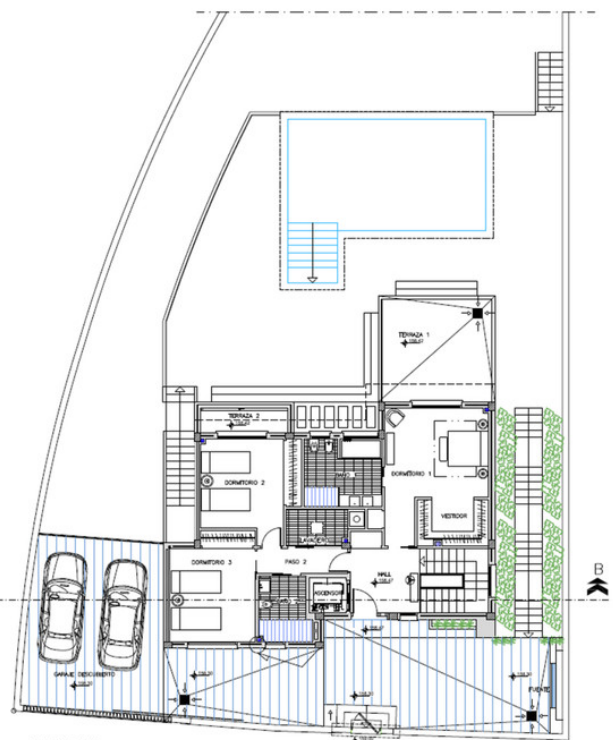
- ✓ Street

Category

- ✓ Investment
- ✓ Off Plan
- ✓ Resale
- ✓ With Planning Permission



PLANTA SEMISÓTANO
DISTRIBUCIÓN



PLANTA BAJA
DISTRIBUCIÓN

SUPERFICIES	CONSTRUIDAS	ÚTILES
PLANTA SÓTANO:		
TRASTERO, ESCALERA Y ASCENSOR.....	126.59 M ²	112.07 M ²
PLANTA SEMISÓTANO:		
VIVIENDA.....	108.52 M ²	92.39 M ²
PORCHE CUBIERTO.....	20.07 M ²	18.55 M ²
PISCINA (Lamina de agua).....	40.20 m ²	40.20 m ²
PLANTA BAJA:		
VIVIENDA.....	108.52 M ²	90.97 M ²
TERRAZA DESCUBIERTA 1.....	20.07 M ²	18.28 M ²
TERRAZA DESCUBIERTA 2.....	5.04 M ²	3.53 M ²
GARAJE DESCUBIERTO.....	41.60 M ²	36.37 M ²

FECHA: SEP. 2019	ESCALA: 1/75	5 DISTRIBUCIÓN PLANTA SEMISÓTANO Y BAJA
------------------------	-----------------	---









