



Sales - Commercial - Marbella
425.000€

www.mibgroup.es
+34 662 58 96 58
info@mibgroup.es

Ref.-ID: MIBGR3876565

Marbella

Commercial

Community: 612 EUR / year

IBI: 2,022 EUR / year



270 m2

Commercial premises on Ricardo Soriano, close to all services and with great potential to set up any type of business. It can be converted into offices, commercial and recreational spaces, as well as storage or storage units, With 270m2 on the floor + 68m2 of hillock Very interesting for big surface business

Setting

- ✓ Commercial Area
- ✓ Close To Shops
- ✓ Close To Sea
- ✓ Close To Schools
- ✓ Close To Marina

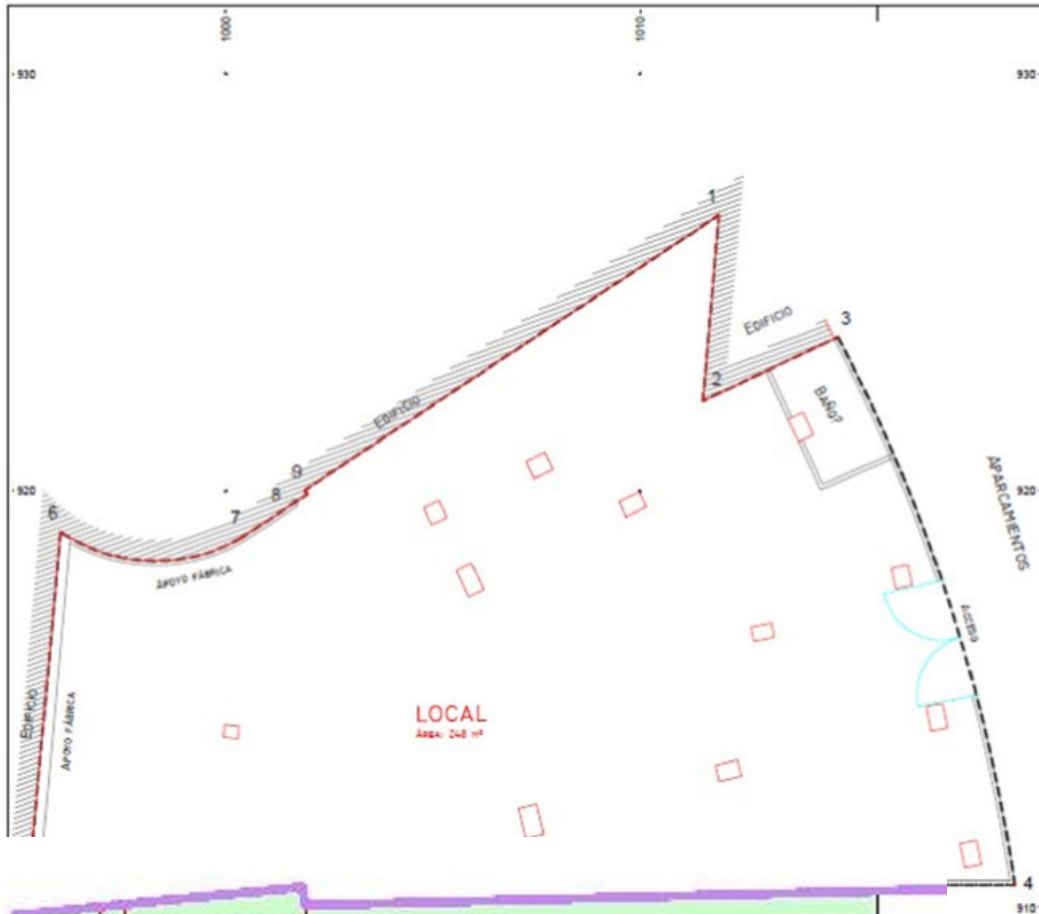




| TOPOLOGÍA | | |
|-----------|----------|--------|
| Vertice | Longitud | C |
| 1 | 4.473 | 10 |
| 2 | 3.803 | 10 |
| 3 | 0.900 | 10 |
| 31 | 23.851 | 10 |
| 32 | 9.458 | 9 |
| 33 | 0.900 | 9 |
| 43 | 1.884 | 10 |
| 44 | 0.117 | 10 |
| 45 | 11.888 | 10 |
| Area | | 248 m² |

| SIMBOL | |
|--------|----------|
| --- | LINEA |
| --- | MURO |
| --- | PLANTA |
| --- | PUESTO |
| --- | EDIFICIO |





| TOPOLOGÍA LOCAL | | | |
|--------------------------|----------|----------|---------|
| Vértice | Longitud | Coord X | Coord Y |
| 1 | 4.475 | 1011.800 | 925.010 |
| 2 | 3.950 | 1014.814 | 922.148 |
| 3 | 0.550 | 1014.710 | 923.588 |
| 31 | 23.801 | 1019.048 | 910.538 |
| 32 | 8.488 | 985.210 | 910.538 |
| 33 | 0.550 | 985.058 | 914.020 |
| 41 | 1.884 | 1008.408 | 913.358 |
| 42 | 0.117 | 1007.888 | 918.810 |
| 43 | 11.805 | 1007.588 | 923.028 |
| Área: 248 m ² | | | |

| SIMBOLOGÍA | |
|------------|----------------|
| | LÍNEA (FRONTO) |
| | MURO |
| | PLANO |
| | PUBLICA |
| | ESPESOR |

