



Sales - House - El Faro
2.150.000€

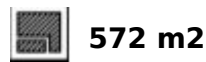
www.mibgroup.es
+34 662 58 96 58
info@mibgroup.es



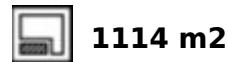
6



6.5



572 m2



1114 m2

Newly built villa in the urbanization El Faro, Mijas Costa, only 200 metres from the beach. The property consists of three levels connected by stairs and lift, which are distributed as follows: main floor with large living-dining room with access to its large terrace, the gardens and the pool, as well as the barbecue area. Furthermore there is a fully fitted kitchen with separate utility room, a guest toilet and two bedrooms ensuite, perfect for guests. First floor with two large bedrooms ensuite, office and another complex bathroom. Furthermore terrace of more than 100 m2 with spectacular sea and mountain views. Finally its large basement with more than 250 m2 houses a huge parking area for several vehicles, machinery room, cinema area, wine cellar, kitchen and an additional bedroom ensuite. It is currently under construction, with completion estimated for the first quarter of 2025. Modifications to the project can be made subject to real interest and agreement with the architect. Ease of payment, in several instalments or monthly payments.

Setting

- ✓ Beachside
- ✓ Close To Golf
- ✓ Close To Shops
- ✓ Close To Sea
- ✓ Close To Town
- ✓ Urbanisation

Climate Control

- ✓ Air Conditioning
- ✓ Hot A/C
- ✓ Cold A/C

Kitchen

- ✓ Fully Fitted

Utilities

- ✓ Electricity
- ✓ Drinkable Water
- ✓ Telephone

Orientation

- ✓ South

Views

- ✓ Sea
- ✓ Panoramic
- ✓ Garden
- ✓ Pool

Garden

- ✓ Private
- ✓ Easy Maintenance

Category

- ✓ Bargain
- ✓ Beachfront
- ✓ Golf
- ✓ Holiday Homes
- ✓ Investment
- ✓ Luxury
- ✓ Contemporary

Condition

- ✓ Excellent
- ✓ New Construction

Features

- ✓ Covered Terrace
- ✓ Lift
- ✓ Fitted Wardrobes
- ✓ Near Transport
- ✓ Private Terrace
- ✓ Solarium
- ✓ Satellite TV
- ✓ WiFi
- ✓ Storage Room
- ✓ Utility Room
- ✓ Ensuite Bathroom
- ✓ Access for people with reduced mobility
- ✓ Barbeque
- ✓ Double Glazing
- ✓ Domotics
- ✓ Basement
- ✓ Fiber Optic

Security

- ✓ Gated Complex
- ✓ Entry Phone
- ✓ Alarm System

Pool

- ✓ Private

Furniture

- ✓ Not Furnished

Parking

- ✓ Garage
- ✓ Covered
- ✓ More Than One







kjmc8cx76g



kjmc8cx76g



kjmc8cx76g

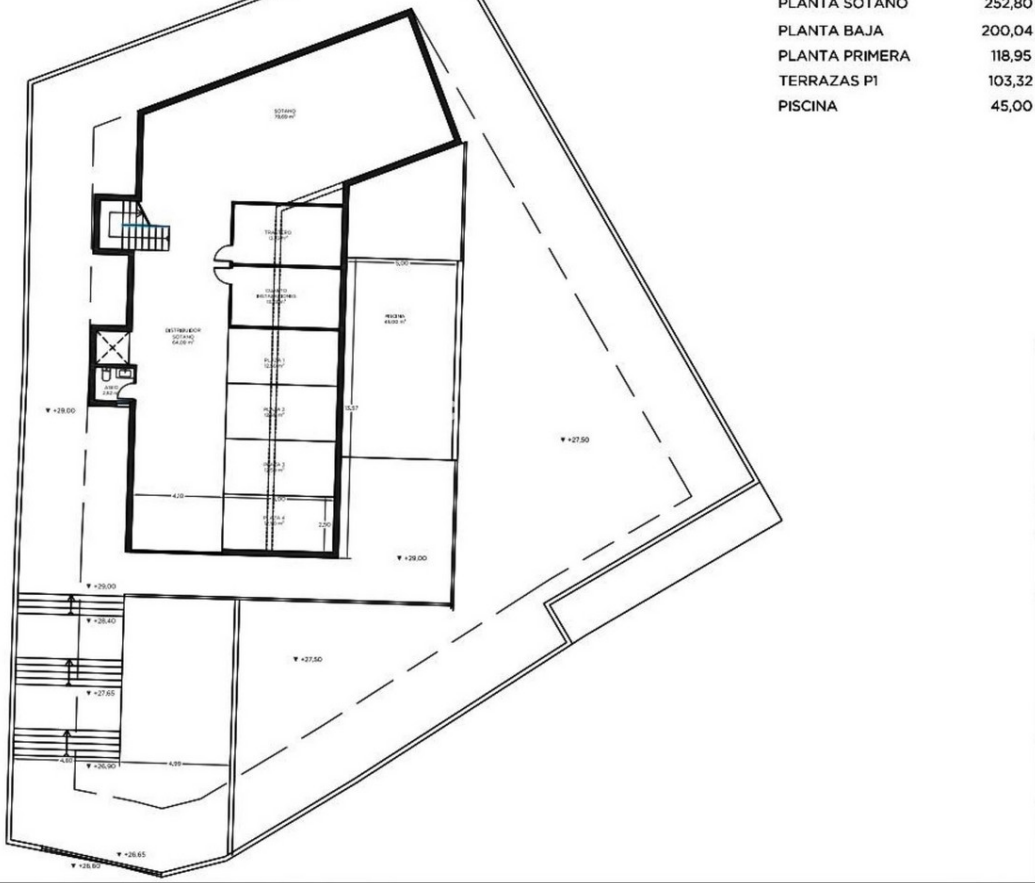


kjmc8cx76g



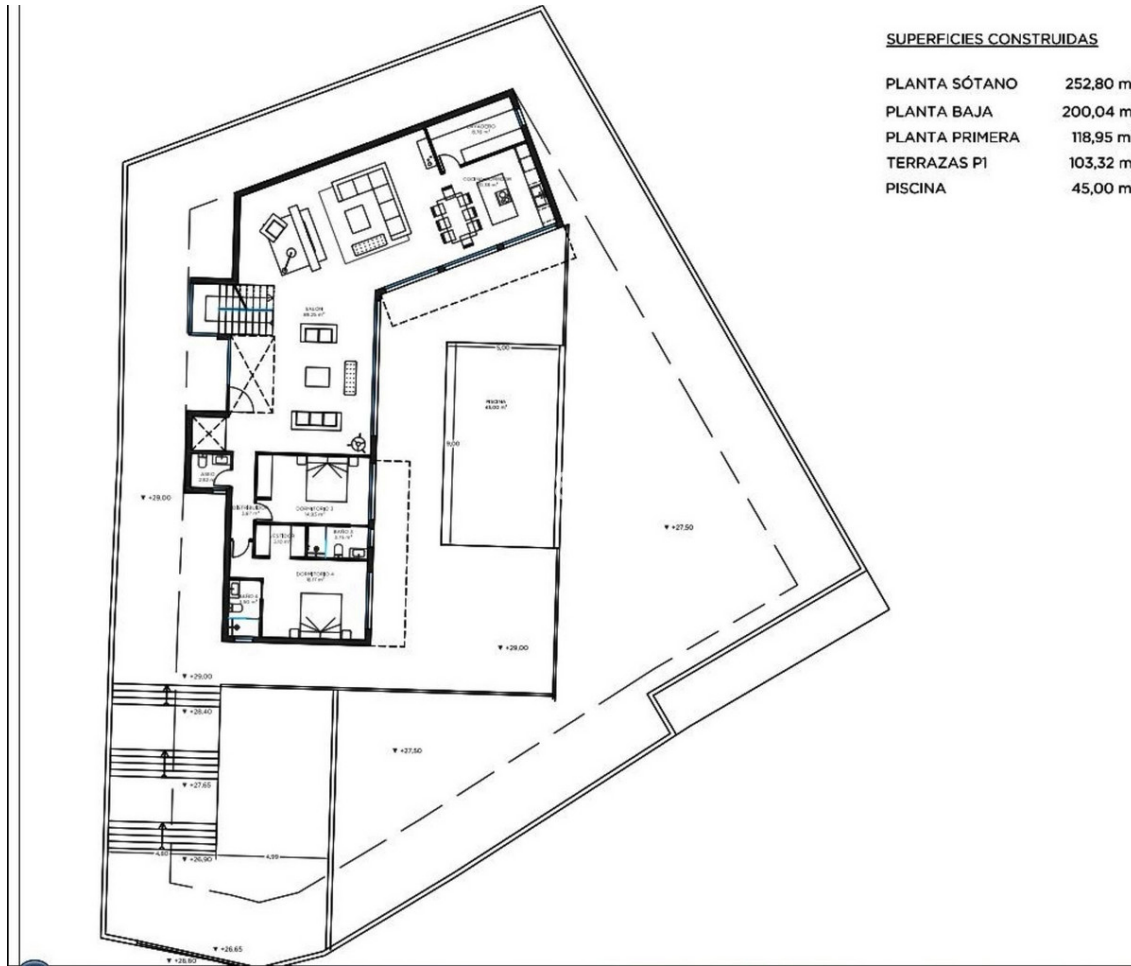


PLANTA SÓTANO	252,80 n
PLANTA BAJA	200,04 r
PLANTA PRIMERA	118,95 n
TERRAZAS P1	103,32 r
PISCINA	45,00 n



PLANTA SÓTANO	252,80 m ²
PLANTA BAJA	200,04 m ²
PLANTA PRIMERA	118,95 m ²
TERRAZAS P1	103,32 m ²
PISCINA	45,00 m ²





SUPERFICIES CONSTRUIDAS

PLANTA SÓTANO	252,80 m ²
PLANTA BAJA	200,04 m ²
PLANTA PRIMERA	118,95 m ²
TERRAZAS P1	103,32 m ²
PISCINA	45,00 m ²