

Ref.-ID: MIBGR4020805

Coín

House

IBI: 818 EUR / year



2



1



240 m2



7229 m2

Marvellous country house located 6km from the centre of Coín (8-minute car drive). The property is located in a plot of over 7,000m² in a beautiful enclave offering fantastic views and with mature trees a very natural environment. The trees that we find on the property are mainly olives with some avocados. The two-storey house offers 2 bedrooms, bathroom, kitchen, and living room with fireplace and direct access out onto a lovely, covered terrace. The ground floor is open-plan and measures 130m². This part of the house can have large windows installed and be divided to make other bedrooms, bathroom, an extra living room, playroom, or a separate apartment. It is currently used as a garage and for storage. The swimming pool is a good size and very private. The road access to the house is good and tarmacked, whilst the property is fenced, has mains electricity and private well water.

Setting

- ✓ Country

Orientation

- ✓ South

Condition

- ✓ Excellent
- ✓ Recently Renovated

Pool

- ✓ Private

Climate Control

- ✓ Fireplace

Views

- ✓ Mountain
- ✓ Country
- ✓ Panoramic
- ✓ Pool

Features

- ✓ Covered Terrace
- ✓ Fitted Wardrobes
- ✓ Private Terrace
- ✓ Storage Room
- ✓ Marble Flooring
- ✓ Double Glazing

Furniture

- ✓ Not Furnished

Kitchen

- ✓ Fully Fitted

Garden

- ✓ Private
- ✓ Easy Maintenance

Security

- ✓ Gated Complex

Parking

- ✓ Garage
- ✓ Open
- ✓ More Than One
- ✓ Private

Utilities

- ✓ Electricity
- ✓ Drinkable Water

Category

- ✓ Resale















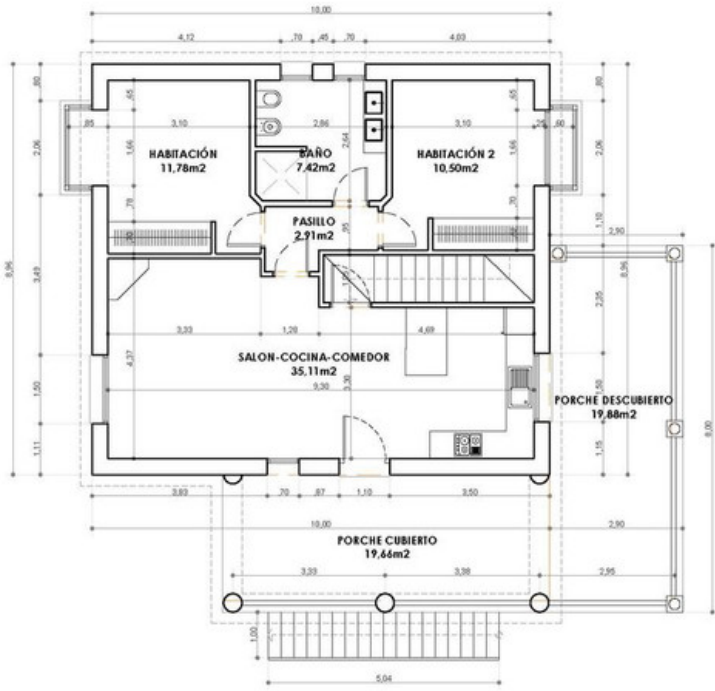










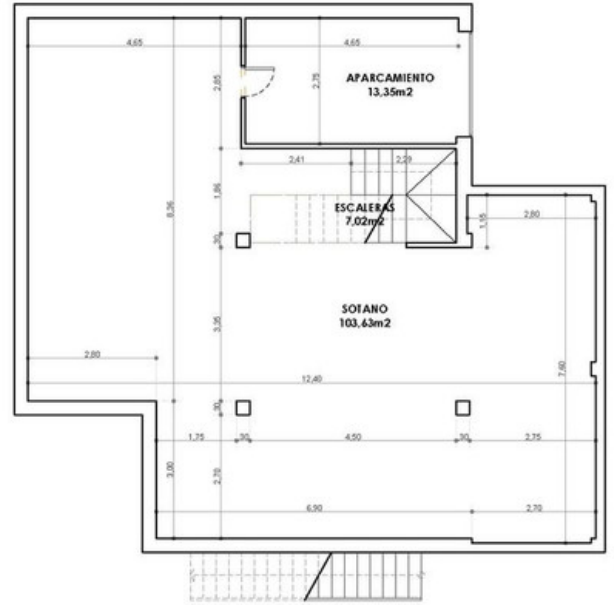


PLANTA BAJA
GROUND FLOOR



Escala:

1:100 A4 1:50 A2



SÓTANO
BASEMENT