

Ref.-ID: MIBGR4309168

Elviria

Apartment

Community: 3,600 EUR / year IBI: 1,200 EUR / year

Rubbish: 185 EUR / year



3



2



166 m2

Spacious and very bright corner apartment with magnificent open views to the golf course & mountains in the popular Terrazas de Santa Maria Golf, Elviria. This spectacular property features ample entrance hall, fully fitted kitchen with fitted utility room, great size living room with lots of natural light and large covered & glassed-in terrace offering panoramic views. Further there are two good size guest bedrooms sharing family bathroom, the master bedroom with bathroom en-suite and direct access to main terrace. Parking space and storage room in underground garage complete this fantastic property. The complex is gated and well kept, communal gardens feature two swimming pools and kids pools. The area is residential, peaceful and quiet, yet only short walk to Santa Maria Golf Club and about 15min walk to Elviria Commercial Centre with all the amenities including number of great restaurants. Beautiful sandy beach (incl. Nikki Beach) is about 25min walk from home. The apartment, has been recently painted throughout, new A/C & terrace glass curtains installed. It is a fabulous family home or holiday retreat in a great neighborhood!! We hold the keys.

Setting

- ✓ Close To Golf
- ✓ Close To Schools

Pool

- ✓ Communal
- ✓ Children`s Pool

Climate Control

- ✓ Air Conditioning
- ✓ Hot A/C

Views

- ✓ Mountain
- ✓ Golf
- ✓ Panoramic
- ✓ Garden
- ✓ Pool

Features

- ✓ Covered Terrace
- ✓ Lift
- ✓ Fitted Wardrobes
- ✓ Private Terrace
- ✓ WiFi
- ✓ Storage Room
- ✓ Utility Room
- ✓ Ensuite Bathroom
- ✓ Marble Flooring
- ✓ Double Glazing

Furniture

- ✓ Part Furnished
- ✓ Optional

Kitchen

- ✓ Fully Fitted

Garden

- ✓ Communal
- ✓ Landscaped

Security

- ✓ Gated Complex
- ✓ Entry Phone
- ✓ Alarm System

Parking

- ✓ Underground
- ✓ Garage
- ✓ Private

Utilities

- ✓ Electricity
- ✓ Drinkable Water

Category

- ✓ Golf
- ✓ Holiday Homes
- ✓ Investment
- ✓ Luxury
- ✓ Resale



























Circa 187 m²

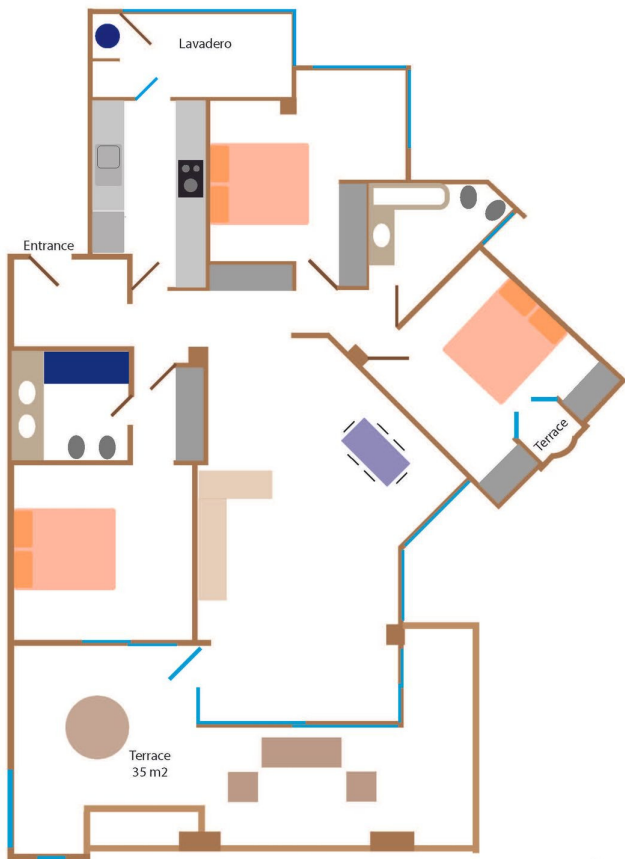


Diagram not to scale

Car parking space and Store Room

