

**Ref.-ID: MIBGR4352539**

**Benahavís**

**House**

**Community: 5,400 EUR / year**



**4**



**7**



**680 m2**



**1005 m2**

Every day is a summer day in the Esmeralda Villas, the 4-bedroom residences with glorious terraced gardens and exclusive pool areas. Here, everything was created to offer the most relaxing and unwinding experience, like the steam & sauna rooms and the home theatre in the basement floor. All villas come with concrete boundary walls, double glazed windows, cooling and heating system, levelled and graded outdoor spaces, precast concrete pavers on driveway and parking. Each villa features an exquisite pool and beautifully crafted hardscape. Located within the gated community of Los Jaralillos - Benahavís, prides itself on providing a private and secure environment for its residents with premium 24/7 security services. THE PROJECT OFFERS 53 VILLAS WITH 3 DIFFERENT STYLES OF 4, 5, AND 6 BEDROOMS, PRICES RANGING FROM 3.600.000 EU TO 8.400.000 EU.

**Setting**

- ✓ Close To Golf
- ✓ Close To Shops
- ✓ Close To Town
- ✓ Close To Schools

**Climate Control**

- ✓ Air Conditioning
- ✓ Fireplace
- ✓ U/F Heating

**Kitchen**

- ✓ Fully Fitted
- ✓ Partially Fitted

**Category**

- ✓ Luxury

**Orientation**

- ✓ South East

**Views**

- ✓ Sea
- ✓ Mountain
- ✓ Golf
- ✓ Country
- ✓ Panoramic
- ✓ Garden
- ✓ Pool

**Garden**

- ✓ Private

**Condition**

- ✓ Excellent
- ✓ New Construction

**Features**

- ✓ Covered Terrace
- ✓ Lift
- ✓ Fitted Wardrobes
- ✓ Near Transport
- ✓ Private Terrace
- ✓ Solarium
- ✓ Gym
- ✓ Sauna
- ✓ Games Room
- ✓ Guest Apartment
- ✓ Storage Room
- ✓ Utility Room
- ✓ Ensuite Bathroom
- ✓ Marble Flooring
- ✓ Jacuzzi
- ✓ Barbeque
- ✓ Double Glazing
- ✓ Domotics

**Security**

- ✓ Electric Blinds
- ✓ Entry Phone
- ✓ Alarm System
- ✓ 24 Hour Security

**Pool**

- ✓ Private
- ✓ Heated

**Furniture**

- ✓ Fully Furnished

**Parking**

- ✓ Covered









# ESMERALDA VILLAS

4 - BED	<b>SQM</b>	680 - 822
	<b>SQFT</b>	7,320 - 8,848
<b>PLOT SIZE</b>		
<b>SQM</b>	1,005 - 1,669	
<b>SQFT</b>	10,818 - 17,965	

Including total indoor & outdoor built up area.



BASEMENT

Disclaimer: All pictures, plans, layouts, information, data and details included in this brochure are indicative only and may change at any time up to the final 'as built' status in accordance with final designs of the project, regulatory approvals and planning permissions. All accessories and interior finishes such as wallpaper, chandeliers, furniture, electronics, white goods, curtains, hard and soft landscaping, pavements, features, gym, and other elements displayed in the brochure, or between the plot boundary, are not part of the unit and are shown for illustrative purposes only.



# ESMERALDA VILLAS

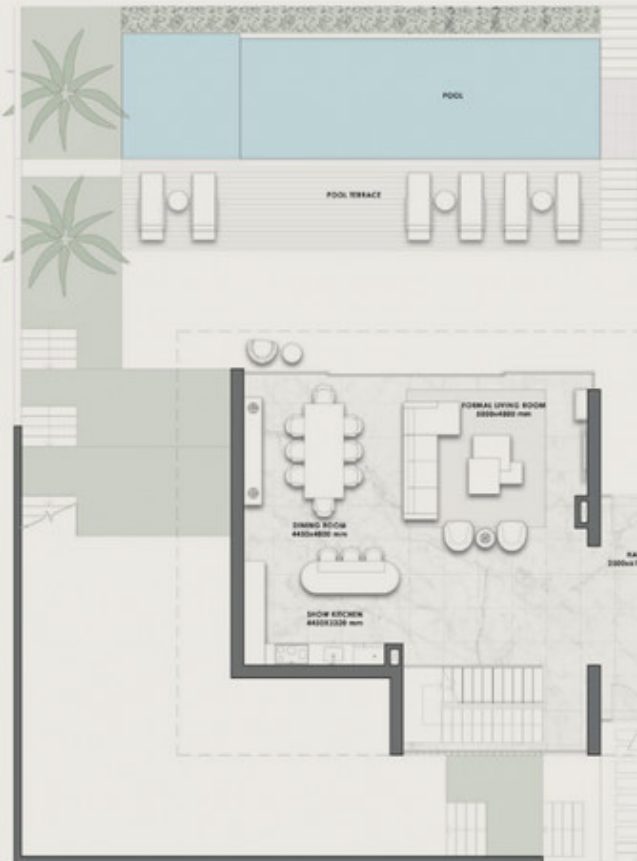
4 - BED	<b>SQM</b>	680 - 822
	<b>SQFT</b>	7,320 - 8,848
<b>PLOT SIZE</b>		
<b>SQM</b>	1,005 - 1,669	
<b>SQFT</b>	10,818 - 17,965	

Including total indoor & outdoor built up area.



GROUND FLOOR

Disclaimer: All pictures, plans, layouts, information, data and details included in this brochure are indicative only and may change at any time up to the final 'as built' status in accordance with final designs of the project, regulatory approvals and planning permissions. All accessories and interior finishes such as wallpaper, chandeliers, furniture, electronics, white goods, curtains, hard and soft landscaping, pavements, features, gym, and other elements displayed in the brochure, or between the plot boundary, are not part of the unit and are shown for illustrative purposes only.



# ESMERALDA VILLAS

<b>4 - BED</b>	<b>SQM</b> 680 - 822
	<b>SQFT</b> 7,320 - 8,848
<b>PLOT SIZE</b>	
<b>SQM</b>	1,005 - 1,669
<b>SQFT</b>	10,818 - 17,965

Including total indoor & outdoor built up area.



FIRST FLOOR



Disclaimer: All pictures, plans, layouts, information, data and details included in this brochure are indicative only and may change at any time up to the final 'as built' status in accordance with final designs of the project, regulatory approvals and planning permissions. All accessories and interior finishes such as wallpaper, chandeliers, furniture, electronics, white goods, curtains, hard and soft landscaping, pavements, features, gym, and other elements displayed in the brochure, or between the plot boundary, are not part of the unit and are shown for illustrative purposes only.

# ESMERALDA VILLAS

<b>4 - BED</b>	<b>SQM</b> 680 - 822
	<b>SQFT</b> 7,320 - 8,848
<b>PLOT SIZE</b>	
<b>SQM</b>	1,005 - 1,669
<b>SQFT</b>	10,818 - 17,965

Including total indoor & outdoor built up area.



ROOFTOP TERRACE



Disclaimer: All pictures, plans, layouts, information, data and details included in this brochure are indicative only and may change at any time up to the final 'as built' status in accordance with final designs of the project, regulatory approvals and planning permissions. All accessories and interior finishes such as wallpaper, chandeliers, furniture, electronics, white goods, curtains, hard and soft landscaping, pavements, features, gym, and other elements displayed in the brochure, or between the plot boundary, are not part of the unit and are shown for illustrative purposes only.