

Ref.-ID: MIBGR4362640

Torrequebrada

Apartment

Community: 1,800 EUR / year IBI: 900 EUR / year

Rubbish: 70 EUR / year



3



2



167 m2

Located in the prestigious Torrequebrada neighborhood, this impressive 3-bedroom, 2-bathroom duplex penthouse is the perfect option for year-round living, vacationing, or renting. Located on the first line of golf and just a 15-minute walk from Benalmádena beach, the property offers a wide variety of shops, restaurants and bars in the immediate vicinity. The famous Torrequebrada golf course is a 3-minute drive away. In addition, the area is known for its tranquility and privacy, and is located in front of the new Albaytar park, with an extension of 23.21 hectares. In addition to the excellent location, the property has impressive views of the golf course to the sea and the mountains. With a total area of 167 square meters and two terraces, this luxury duplex penthouse meets and exceeds all expectations. The spacious and bright living room is decorated with contemporary furniture. In addition, it has two terraces with views of the sea and golf. On this same floor there are two beautiful furnished rooms, an equipped kitchen with a laundry room and a bathroom. The upper floor of the duplex penthouse has a spacious main room, a big dressing room, a bathroom with a Jacuzzi, and a terrace with panoramic views of the sea, golf, and mountains. The property has a tourist license and includes two parking spaces. In short, this property is a unique opportunity for those looking to enjoy a luxurious life in a privileged location.

Setting

- ✓ Close To Golf
- ✓ Close To Shops
- ✓ Close To Town
- ✓ Close To Schools

Climate Control

- ✓ Air Conditioning

Views

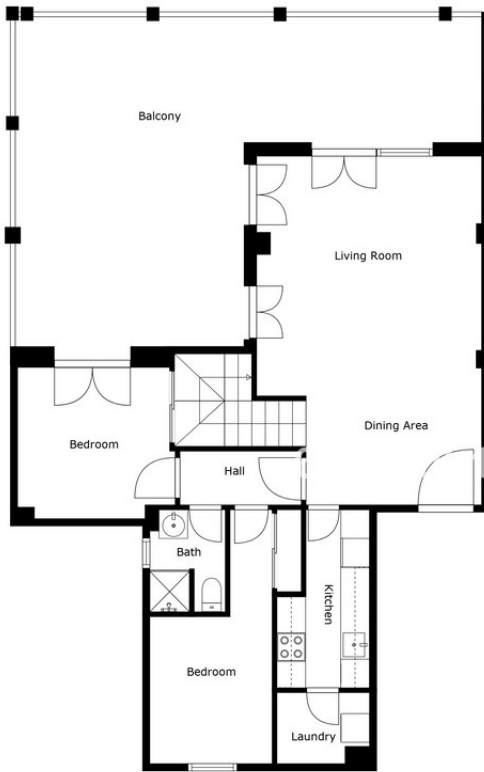
- ✓ Sea
- ✓ Mountain
- ✓ Golf
- ✓ Panoramic
- ✓ Urban

Features

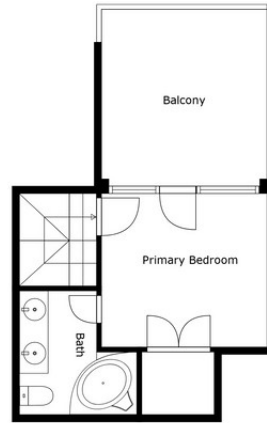
- ✓ Lift
- ✓ Near Transport
- ✓ Private Terrace

Furniture

- ✓ Not Furnished



Floor 1



Floor 2

Measurements Are Calculated By Cubicasa Technology. Deemed Highly Reliable But Not Guaranteed.









6u5vbuh1hk



6u5vbuh1hk















