

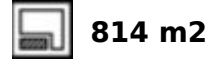
Ref.-ID: MIBGR4416757

Marbella

House

Community: 780 EUR / year

IBI: 3,412 EUR / year



This brand new villa was designed by the award winning architect Robles Diaz. A luxury property is just a few meters from the beach and the renown Marbella promenade where you have restaurants, entertainment and luxury 5 star hotels on your door step. This stunning home has the advantage of the secure gated community of Casablanca where you can take a short, sea view walk into Marbella center also Puerto Banus is just 5 minutes away by car. This beautiful, south facing villa is light and bright, and is set on a flat plot of 813m2 with a 668m2 build. It is distributed over three floors, all connected by elevator or a sweeping staircase. There are 6 bedrooms (currently, one of them is used as an office) and 6 bathrooms plus a toilet for guests. The main floor consists of a spacious living-dining room with access to a large covered terrace, the garden and the pool. also a fully equipped open-plan kitchen, an office and a guest toilet. On the first floor, a generous master suite and two further en-suite bedrooms, all with access to their own terraces. Large wardrobes make these bedrooms ideal for long stays or permanent living. The roof terrace boasts stunning sea views where you can watch the sunset with a mountain back drop. On the lowest level there are two double en-suite bedrooms with natural light, a large multipurpose space, laundry room, plus a storage room. This villa certainly has the wow factor and must be seen to be appreciated.

#### Setting

- ✓ Beachside
- ✓ Close To Shops
- ✓ Close To Schools

#### Features

- ✓ Covered Terrace
- ✓ Lift
- ✓ Fitted Wardrobes
- ✓ Near Transport
- ✓ Storage Room
- ✓ Utility Room
- ✓ Barbeque
- ✓ Basement

#### Pool

- ✓ Private

#### Security

- ✓ Electric Blinds

#### Climate Control

- ✓ Air Conditioning
- ✓ Fireplace

#### Views

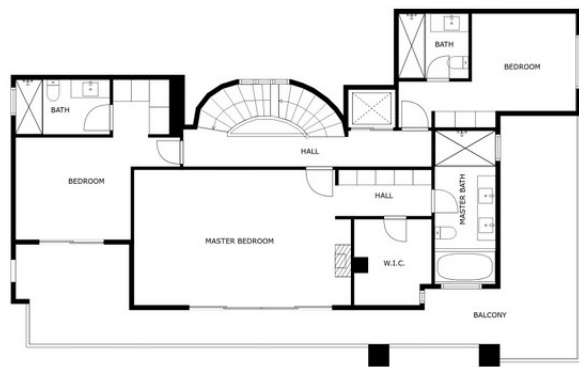
- ✓ Sea
- ✓ Mountain
- ✓ Pool



6u5/buh



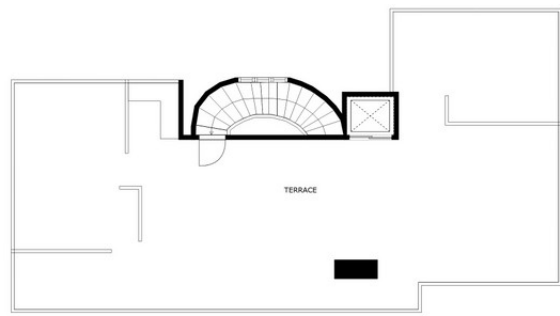
FLOOR 2



FLOOR 3



FLOOR 1



FLOOR 4

SIZES ARE APPROXIMATE, ACTUAL MAY VARY.







































6u5vbuh1hk



6u5vbuh1hk