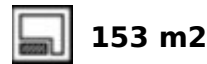
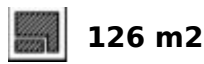


Ref.-ID: MIBGR4420054

Estepona

House



MODERN SEMI-DETACHED TOWNHOUSE IN BAHIA DORADA WITH SEA VIEWS, due to its elevated position, in an exclusive project of 3 houses, two of them semi-detached, only 500m from the beach. It is only 1.5 km from Estepona Golf, 5 minutes from Estepona port and 10 minutes from the port of La Duquesa. Fully functional, built on two floors, south-east facing, and very bright, with top quality materials and kitchen equipped with top brand appliances, atherothermal water system, top quality porcelain tiles, an elegant design. With a large terrace and a private garden to enjoy with family and friends. Must be seen.

Setting

- ✓ Close To Sea
- ✓ Close To Town
- ✓ Close To Schools
- ✓ Close To Marina

Views

- ✓ Sea
- ✓ Panoramic
- ✓ Garden

Parking

- ✓ Garage

Orientation

- ✓ East
- ✓ South

Features

- ✓ Fitted Wardrobes
- ✓ Private Terrace
- ✓ Ensuite Bathroom
- ✓ Double Glazing

Utilities

- ✓ Electricity
- ✓ Drinkable Water

Condition

- ✓ Excellent

Kitchen

- ✓ Fully Fitted

Category

- ✓ Off Plan
- ✓ Contemporary

Climate Control

- ✓ Air Conditioning

Garden

- ✓ Private













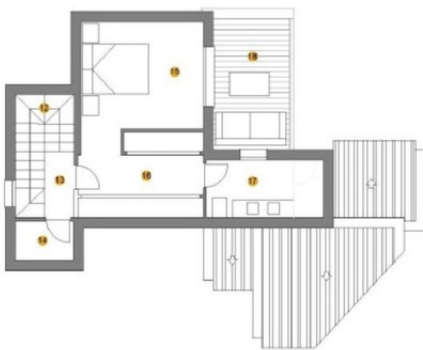




Planta Baja



Planta Primera



Vivienda 242

Planta Baja

● Hall	0,90 m ²
● Trastero 1	1,57 m ²
● Escalera	4,17 m ²
● Comedor	7,98 m ²
● Cocina	5,44 m ²
● Sal6n	24,62 m ²
● Escalera y distribuidor	3,91 m ²
● Dormitorio 1	11,30 m ²
● Ba6o 1	3,07 m ²

Total sup. 6til cerrada 62,96 m²

● Porche 1,02 m²

● Terraza 1 15,60 m²

Total sup. 6til abierta 16,62 m²

Total sup. construida 79,60 m²

Planta Primera

● Escalera	4,92 m ²
● Distribuidor	1,77 m ²
● Trastero 2	2,11 m ²
● Dormitorio 2	12,98 m ²
● Vestidor	8,86 m ²
● Ba6o 2	6,21 m ²

Total sup. 6til cerrada 36,85 m²

● Terraza 2 9,28 m²

Total sup. 6til abierta 9,28 m²

Total sup. construida 47,88 m²

Total vivienda

Total sup. 6til cerrada 99,18 m²

Total sup. 6til abierta 25,90 m²

Total sup. construida 127,66 m²

SUPERFICIES
VIVIENDA 242