



Sales - Apartment - Benalmadena Costa
998.000€

www.mibgroup.es
+34 662 58 96 58
info@mibgroup.es

Ref.-ID: MIBGR4431397

Benalmadena Costa

Apartment

Community: 2,736 EUR / year IBI: 2,025 EUR / year

Rubbish: 160 EUR / year



3



3



157 m2

We present to you this spectacular duplex penthouse located in Dos Mares, a truly privileged area of Benalmadena harbour. This exclusive property offers breathtaking views of the sea, beach and the Port of Benalmadena. Furthermore, it's location provides quick and convenient access to the beach, as well as to a wide variety of restaurants, shopping centers, and entertainment options. On the main floor, you'll find an elegant entrance hall, a separate fully equipped kitchen looking into the spacious living-dining room that opens onto a large terrace with spectacular open views of the sea and beach. Imagine enjoying your dinner with the sea breeze as your backdrop and open seaviews all the way to Africa. On the same floor you find 2 double bedrooms. The first bedroom comes with an en-suite bathroom and its own sunny terrace with beautiful views over the harbour. The second bedroom has a separate high-quality bathroom in the hallway. Each bedroom comes with built-in wardrobes. The upper floor of this duplex penthouse has a spacious master bedroom with en-suite bathroom and another covered terrace with panoramic views over the port and the sea. Additionally, the building has an elevator that takes you direct to this the 4th floor. From this floor you have as well your own private access to the communal rooftop pool. This pool is heated and can be used 365 days a year, 24 hours a day. To complete this exceptional offer, the property comes with a 17m2 storage room and a 22m2 parking space in the communal underground garage, which has security cameras overlooking your vehicle. This penthouse is a unique opportunity to enjoy the ultimate quality lifestyle with all imaginable comforts in an unbeatable location.

Setting

- ✓ Beachfront
- ✓ Beachside
- ✓ Port
- ✓ Close To Port
- ✓ Close To Shops
- ✓ Close To Sea
- ✓ Close To Town
- ✓ Marina
- ✓ Close To Marina
- ✓ Urbanisation
- ✓ Front Line Beach Complex

Climate Control

- ✓ Air Conditioning
- ✓ Pre Installed A/C

Kitchen

- ✓ Fully Fitted

Category

- ✓ Beachfront
- ✓ Holiday Homes
- ✓ Investment
- ✓ Luxury
- ✓ Resale

Orientation

- ✓ East
- ✓ South
- ✓ South West
- ✓ West

Views

- ✓ Sea
- ✓ Beach
- ✓ Port
- ✓ Panoramic
- ✓ Urban

Security

- ✓ Gated Complex
- ✓ Alarm System
- ✓ 24 Hour Security

Condition

- ✓ Good

Features

- ✓ Covered Terrace
- ✓ Lift
- ✓ Fitted Wardrobes
- ✓ Near Transport
- ✓ Private Terrace
- ✓ Solarium
- ✓ WiFi
- ✓ Storage Room
- ✓ Ensuite Bathroom
- ✓ Marble Flooring
- ✓ Double Glazing

Parking

- ✓ Underground
- ✓ Garage

Pool

- ✓ Communal
- ✓ Heated

Furniture

- ✓ Optional

Utilities

- ✓ Electricity



































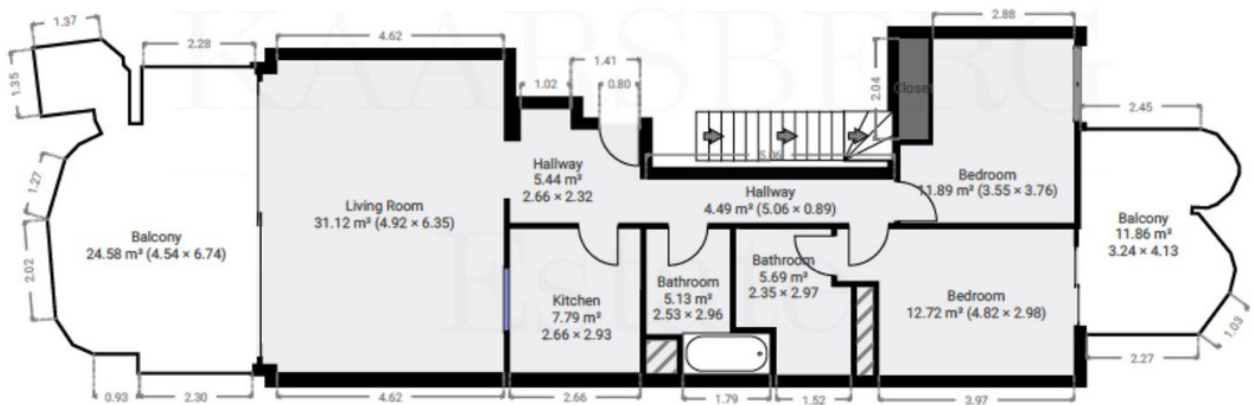








NOT TO SCALE
Ground floor



NOT TO SCALE
First floor

