

Ref.-ID: MIBGR4456966

Fuengirola

House



4



2



267 m2



156 m2

This semi-detached house in Fuengirola is a charming three-level property that offers comfort and versatility for the whole family. On the ground floor, you are welcomed with a front patio that adds a touch of character and privacy to the home. Upon entering, a hallway leads you to a toilet, while the spacious living-dining room with a cozy fireplace becomes the heart of the home. From here, you can access a rear patio, ideal for relaxing or enjoying alfresco meals. The separate kitchen, with space for a dining area, also opens to the rear patio, making it perfect for those who enjoy cooking and entertaining. The backyard features a storage room for additional storage and a barbecue area, making it a versatile space for all your needs. Upstairs, you'll find four bedrooms that offer more than enough space for the entire family, along with a full bathroom. The basement, with its own full bathroom, provides additional space that could be used as a game room, work area, or even a guest space. This chalet also includes a private garage with enough space for one car, which is a luxury in such a central location. The property is ideally located, close to a wide variety of amenities, such as schools and shops, making everyday life easier. In short, this house is a unique opportunity to live with all the comforts a family could want, in a convenient and desired location in Fuengirola.

**Setting**

- ✓ Close To Shops
- ✓ Close To Schools

**Features**

- ✓ Private Terrace
- ✓ Storage Room
- ✓ Barbeque
- ✓ Basement

**Condition**

- ✓ Good

**Kitchen**

- ✓ Fully Fitted

**Climate Control**

- ✓ Air Conditioning
- ✓ Fireplace

**Parking**

- ✓ Garage
- ✓ Covered

**Views**

- ✓ Urban















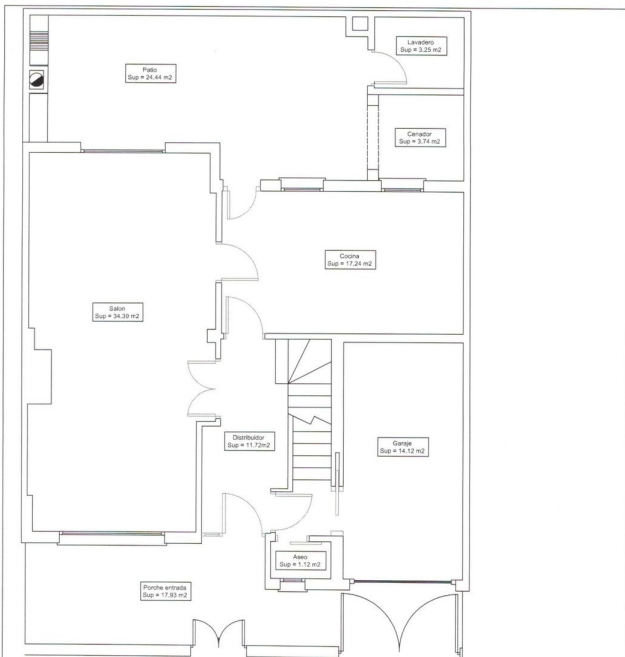






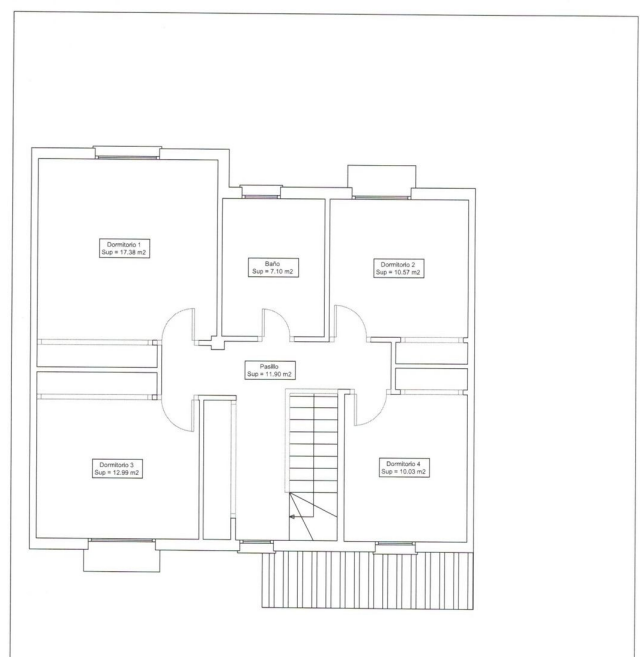






Cocina	17.24 m2
Salon	34.39 m2
Distribuidor	11.72 m2
Garaje	14.12 m2
Aseo	1.12 m2
Lavadero	3.25 m2
Cenador	3.74 m2
=====	
Total Util	85.58 m2
Total Const	99.46 m2

Sup Construida P. Baja  
**99.46 m2**



Dormitorio 1	7.38 m2
Baño	7.19 m2
Dormitorio 2	10.57 m2
Dormitorio 3	12.99 m2
Dormitorio 4	10.03 m2
Pasillo	11.90 m2
=====	
Total Util	69.97 m2
Total Const	85.00 m2

Sup Construida P. Alta  
**85.00 m2**

82.32 % Util sobre Construida

