

Ref.-ID: MIBGR4573402

Benahavís

House

Community: 2,400 EUR / year IBI: 1,184 EUR / year

Rubbish: 18 EUR / year



5



6



460 m2



2500 m2

Villa for sale in , Benahavis with 5 bedrooms, 5 bathrooms, 5 en suite bathrooms, 2 toilets and with orientation south, with private swimming pool, private garage (3 parking spaces) and private garden. Regarding property dimensions, it has 460 m² built and 2,500 m² plot. Has the following facilities mountainside, air conditioning, fully furnished, fully fitted kitchen, fireplace, storage room, alarm, solarium, security entrance, double glazing, video entrance, dining room, security service 24h, guest toilet, private terrace, kitchen equipped, living room, sea view, mountain view, automatic irrigation system, home automation system, laundry room, internet - wi-fi, covered terrace, 24h service, fitted wardrobes, gated community, lift, garden view, pool view, panoramic view, underfloor heating (bathrooms), close to golf, uncovered terrace, open plan kitchen, excellent condition, surveillance cameras and office room.

Setting

- ✓ Close To Golf

Climate Control

- ✓ Air Conditioning
- ✓ Fireplace
- ✓ U/F/H Bathrooms

Kitchen

- ✓ Fully Fitted
- ✓ Partially Fitted

Orientation

- ✓ South

Views

- ✓ Sea
- ✓ Mountain
- ✓ Panoramic
- ✓ Garden
- ✓ Pool

Garden

- ✓ Private

Condition

- ✓ Excellent

Features

- ✓ Covered Terrace
- ✓ Lift
- ✓ Fitted Wardrobes
- ✓ Private Terrace
- ✓ Solarium
- ✓ Storage Room
- ✓ Ensuite Bathroom
- ✓ Double Glazing
- ✓ Domotics

Security

- ✓ Entry Phone
- ✓ Alarm System
- ✓ 24 Hour Security

Pool

- ✓ Private

Furniture

- ✓ Fully Furnished

Parking

- ✓ Private

























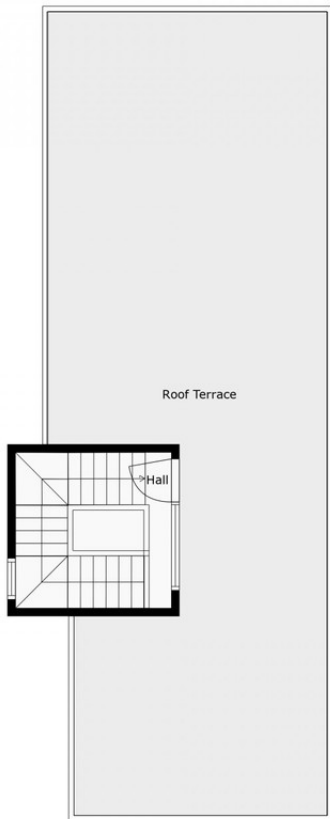
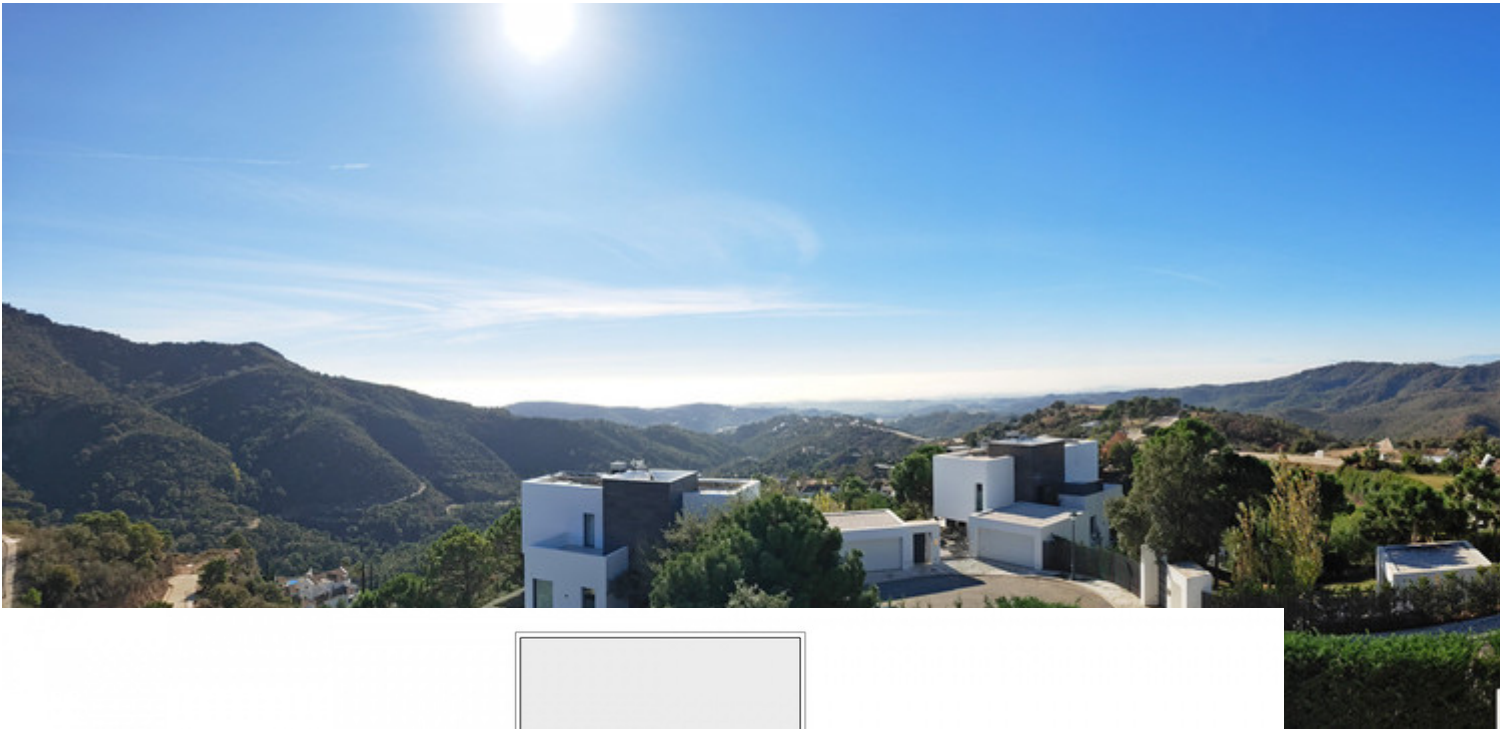












2

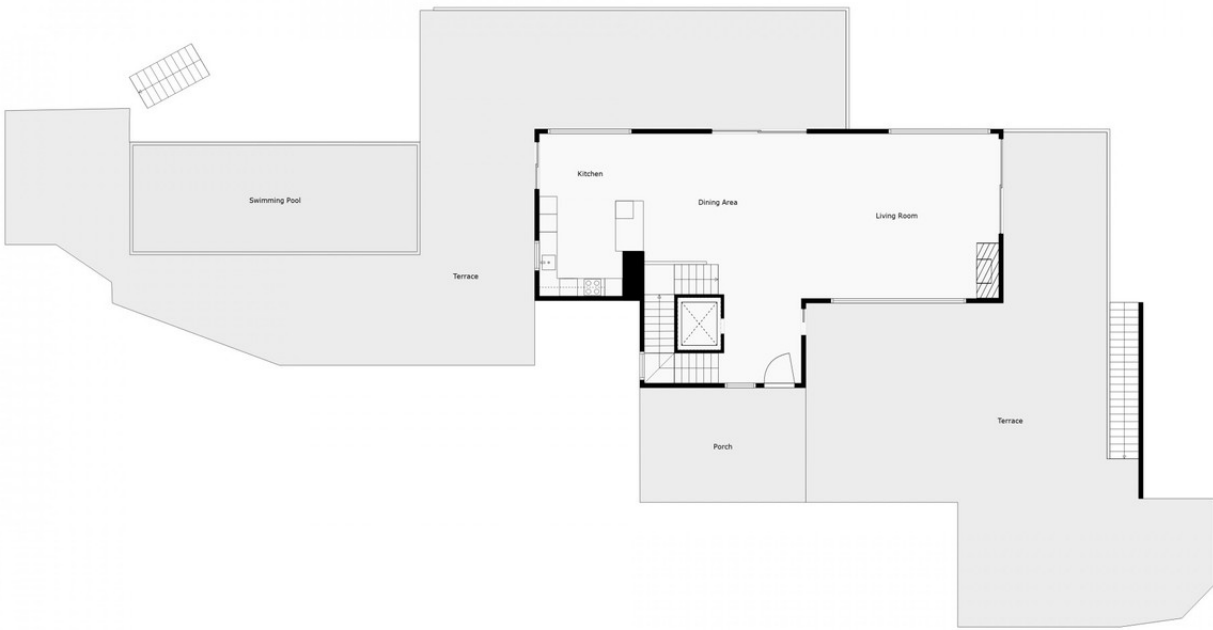
For Illustrative Purpose Only. May Not Be Perfectly To Scale.





1

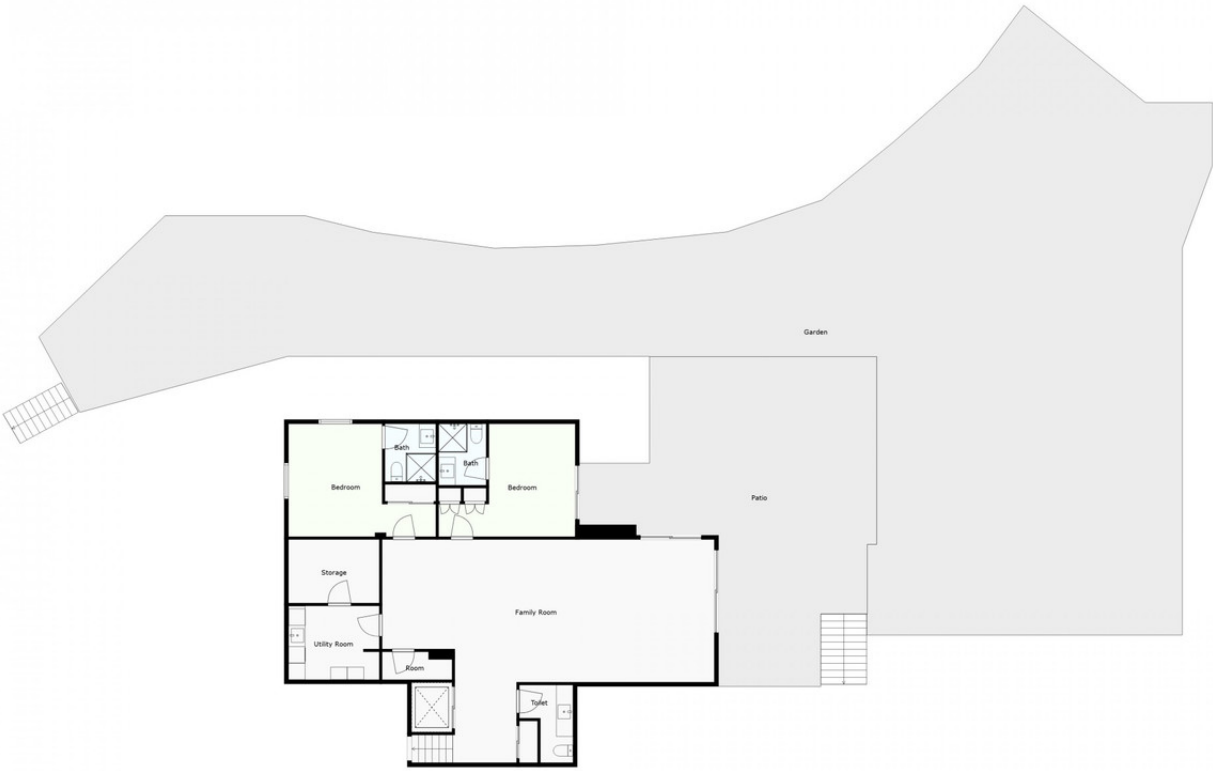
For Illustrative Purpose Only. May Not Be Perfectly To Scale.



0

For Illustrative Purpose Only. May Not Be Perfectly To Scale.





-1

For Illustrative Purpose Only. May Not Be Perfectly To Scale.

