

Ref.-ID: MIBGR4599199

Benalmadena

House



This newly started villa is the king of the hill! (under construction) Conceptualized from the idea of 'comfort living', this striking villa features bright and open spaces with immaculate sea views from all living spaces... Combining cutting edge architecture and luxurious interiors, Stupa Villas are perched in a stunning location above the Mediterranean Coast of the Costa del Sol. With far reaching views across to Africa and Gibraltar and with breath taking sunset vistas over the sub-tropical beaches of Benalmadena, Stupa Villas are the epitome of modern, luxurious living. The ideal combination of modern technology and contemporary design, each individual villa has been specifically plotted to maximize views and privacy. Each villa comes with high qualities, among them to quote a few ones: underfloor heating, designer equipment for bathrooms, Miele appliances, Bio ethanol fireplace.... Villa Toji is currently a 3 bedrooms ensuit with a toilet, an office, a laundry room, kitchen, dining and living room on 2 levels, plus a basement. Clients can add a 4th bedroom in the basement and basement can also be extended if needed. Please note that this is NOT a rental property!!!

Setting

- ✓ Close To Golf
- ✓ Close To Port
- ✓ Close To Shops
- ✓ Close To Sea
- ✓ Close To Town
- ✓ Close To Schools
- ✓ Close To Marina
- ✓ Urbanisation

Climate Control

- ✓ Air Conditioning
- ✓ Hot A/C
- ✓ Fireplace
- ✓ U/F Heating
- ✓ U/F/H Bathrooms

Kitchen

- ✓ Fully Fitted

Utilities

- ✓ Electricity
- ✓ Solar water heating

Orientation

- ✓ South

Views

- ✓ Sea
- ✓ Mountain
- ✓ Panoramic

Garden

- ✓ Private
- ✓ Easy Maintenance

Category

- ✓ Investment
- ✓ Luxury
- ✓ Resale
- ✓ With Planning Permission
- ✓ Contemporary

Condition

- ✓ New Construction

Features

- ✓ Covered Terrace
- ✓ Fitted Wardrobes
- ✓ Near Transport
- ✓ Private Terrace
- ✓ Games Room
- ✓ Storage Room
- ✓ Utility Room
- ✓ Ensuite Bathroom
- ✓ Double Glazing
- ✓ Basement

Security

- ✓ Entry Phone

Pool

- ✓ Private

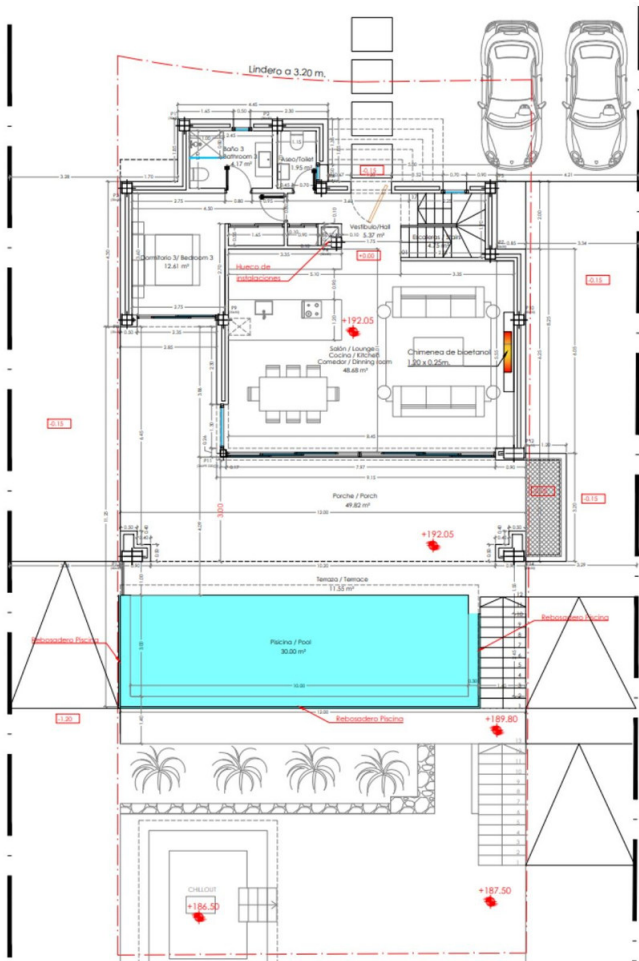
Furniture

- ✓ Not Furnished
- ✓ Optional

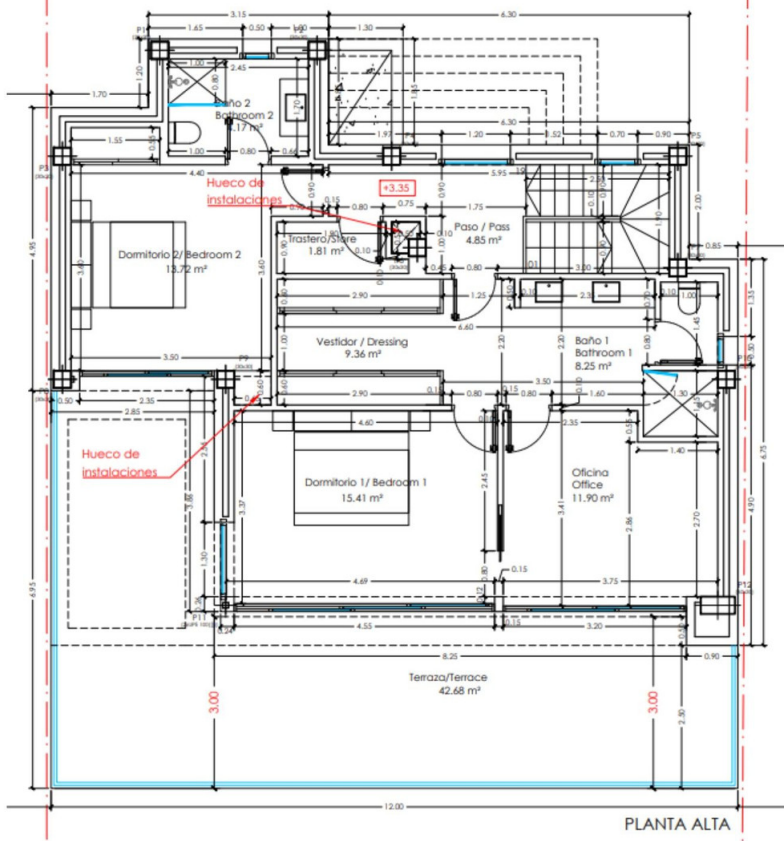
Parking

- ✓ Open
- ✓ Private





Lindero a 3.20 m.



PLANTA ALTA

