

Ref.-ID: MIBGR4614961

Estepona

House



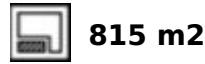
4



4



210 m2



815 m2

Looking for a spectacular villa with breathtaking sea views? Look no further! This exclusive property is located in one of the best areas of Casares, offering absolutely magnificent panoramic views of Camarate del Golf. Made in a modern style with high quality materials, this eco-friendly construction is super efficient and seems to float above the landscape. Spread over two floors, this spacious and diaphanous villa boasts 4 bedrooms and 4 bathrooms, making it the perfect home for a small family or couple who love views and tranquility. The dining-kitchen offers direct sea views, while the overflowing infinity pool is the perfect place to relax and take in the stunning surroundings. Finished in summer 2024, this property is a great opportunity to own a second home or investment property. Close to supermarkets, the Port of the Duquesa, and the beach and chiringuitos, this villa is perfectly located for those who want to enjoy the best of the Costa del Sol. Don't miss out on this amazing opportunity to own a property that truly has it all. Contact us today to schedule a viewing!

Setting

- ✓ Commercial Area
- ✓ Close To Port
- ✓ Close To Shops
- ✓ Close To Sea
- ✓ Close To Town
- ✓ Close To Schools
- ✓ Urbanisation

Climate Control

- ✓ Air Conditioning
- ✓ Hot A/C
- ✓ Cold A/C
- ✓ Fireplace
- ✓ U/F Heating
- ✓ U/F/H Bathrooms

Kitchen

- ✓ Fully Fitted

Utilities

- ✓ Electricity
- ✓ Drinkable Water

Orientation

- ✓ South

Views

- ✓ Sea
- ✓ Beach
- ✓ Panoramic
- ✓ Garden

Garden

- ✓ Private

Category

- ✓ Beachfront
- ✓ Luxury

Condition

- ✓ Excellent

Features

- ✓ Covered Terrace
- ✓ Fitted Wardrobes
- ✓ Near Transport
- ✓ Private Terrace
- ✓ Solarium
- ✓ Gym
- ✓ Games Room
- ✓ Paddle Tennis
- ✓ Storage Room
- ✓ Utility Room
- ✓ Ensuite Bathroom
- ✓ Barbeque
- ✓ Double Glazing
- ✓ Restaurant On Site
- ✓ Courtesy Bus
- ✓ Basement

Security

- ✓ Electric Blinds
- ✓ Entry Phone

Pool

- ✓ Private

Furniture

- ✓ Not Furnished

Parking

- ✓ Street





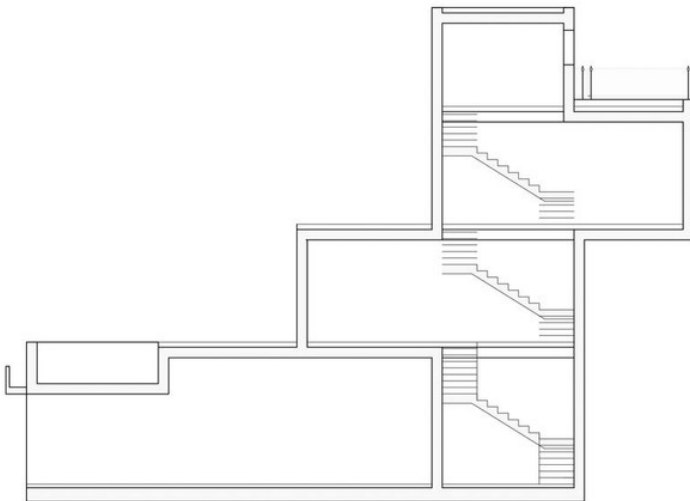
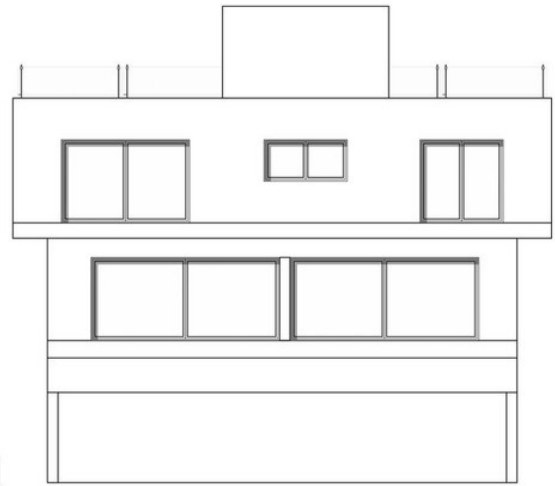
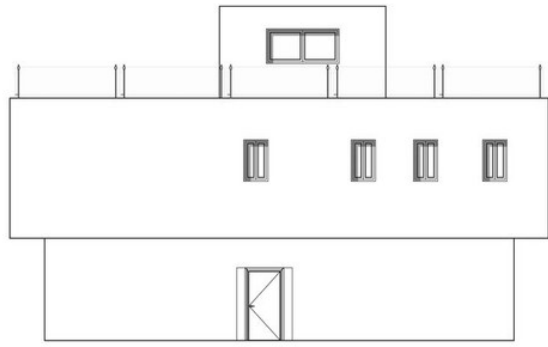


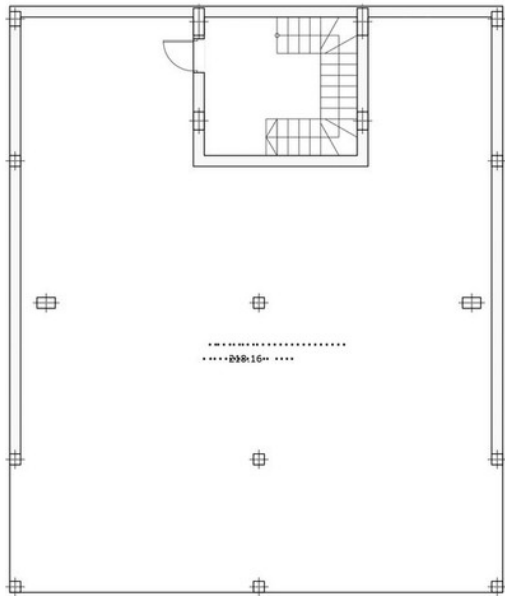




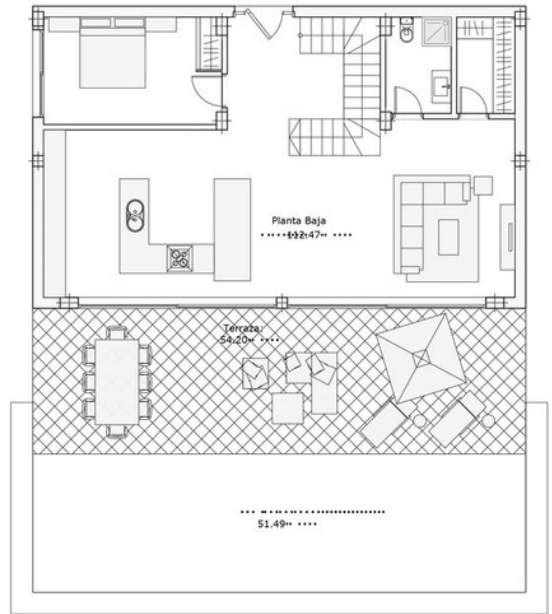




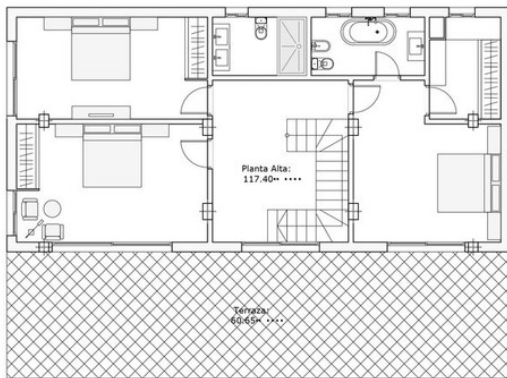




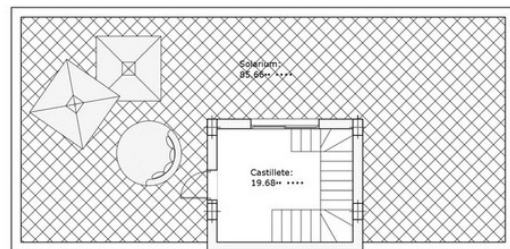
.....



PLANTA BAJA



PLANTA PRIMERA



PLANTA CUBIERTA