

**Ref.-ID: MIBGR4618570**

**Entrerrios**

**House**



**7**



**5**



**500 m2**

Great opportunity, farm with 24,000m2 of land with its own water well legalized by the Junta de Andalucia, with two independent chalets legalized in the Entrerrios area, views of the sea and the mountains, southeast orientation and the other southwest, two swimming pools. Perfect lane access without any problem for any vehicle. 13 minutes from La Cala de Mijas and 16 minutes from the Miramar shopping center in Fuengirola. Chalet A, all on a single level distributed in living room, two full bathrooms, three bedrooms and kitchen, plus covered parking area for two cars and a terrace 100m2 solarium, and 30m2 pool. Chalet B, two levels, 4 bedrooms and three bathrooms, a large living room, large kitchen and another smaller living room, 100m2 terrace area and another type of solarium with sea views with 100m2 more. ... 50m2 pool. It is a farm that offers a great opportunity for investors or people looking for this type of property. There are 24,000m2 on two plots that go down to the river, it has several paths made that were previously usable by car, and it has several completely flat areas on the plot.

**Setting**

- ✓ Country
- ✓ Close To Sea

**Climate Control**

- ✓ Air Conditioning

**Kitchen**

- ✓ Fully Fitted

**Category**

- ✓ Bargain
- ✓ Investment
- ✓ Reduced

**Orientation**

- ✓ South East
- ✓ South West

**Views**

- ✓ Sea
- ✓ Mountain
- ✓ Country
- ✓ Panoramic
- ✓ Pool

**Garden**

- ✓ Private

**Condition**

- ✓ Fair

**Features**

- ✓ Covered Terrace
- ✓ Fitted Wardrobes
- ✓ Private Terrace
- ✓ Solarium
- ✓ Utility Room
- ✓ Jacuzzi
- ✓ Barbeque

**Parking**

- ✓ Covered
- ✓ More Than One

**Pool**

- ✓ Private

**Furniture**

- ✓ Part Furnished

**Utilities**

- ✓ Electricity
- ✓ Drinkable Water
- ✓ Telephone





































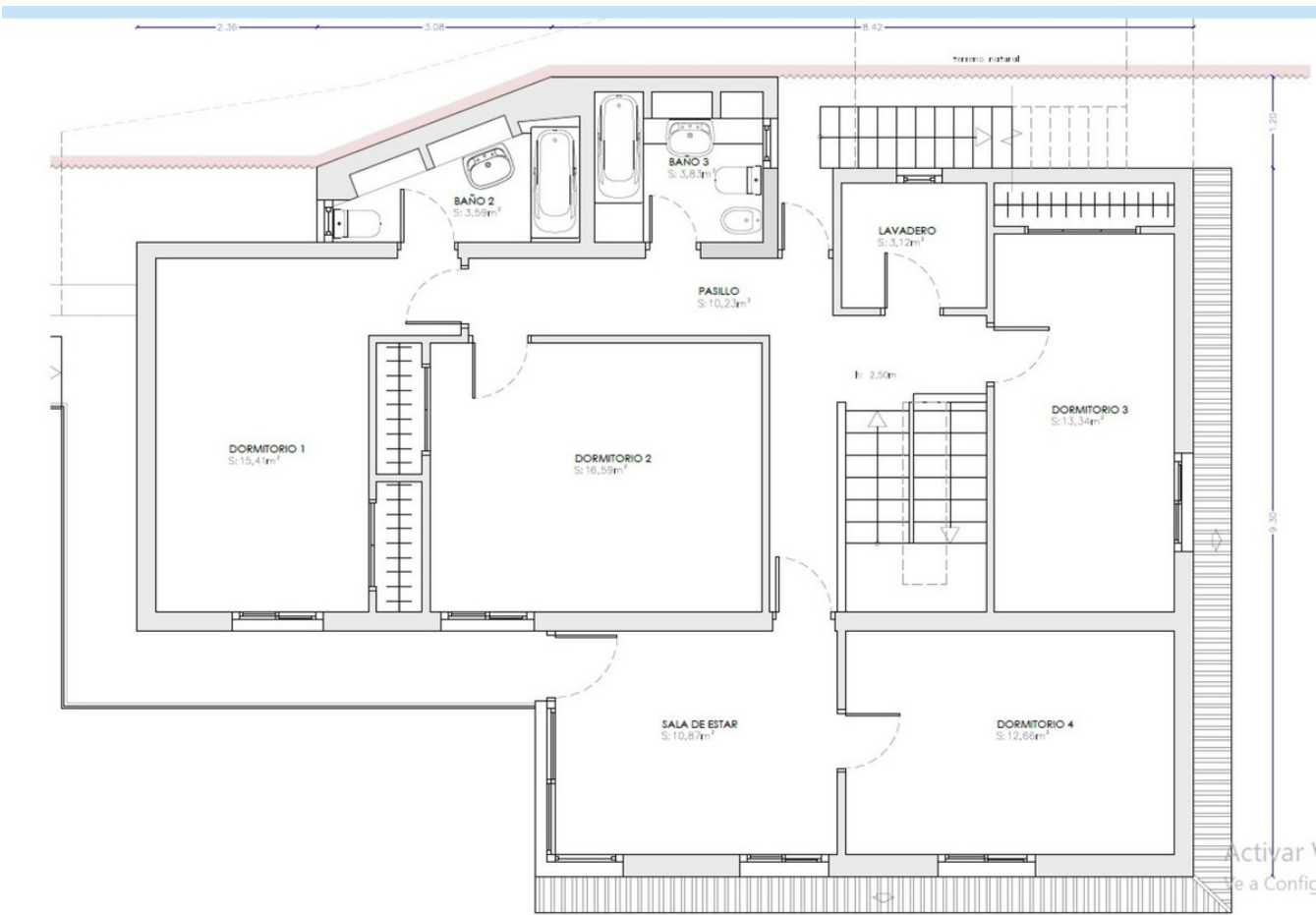




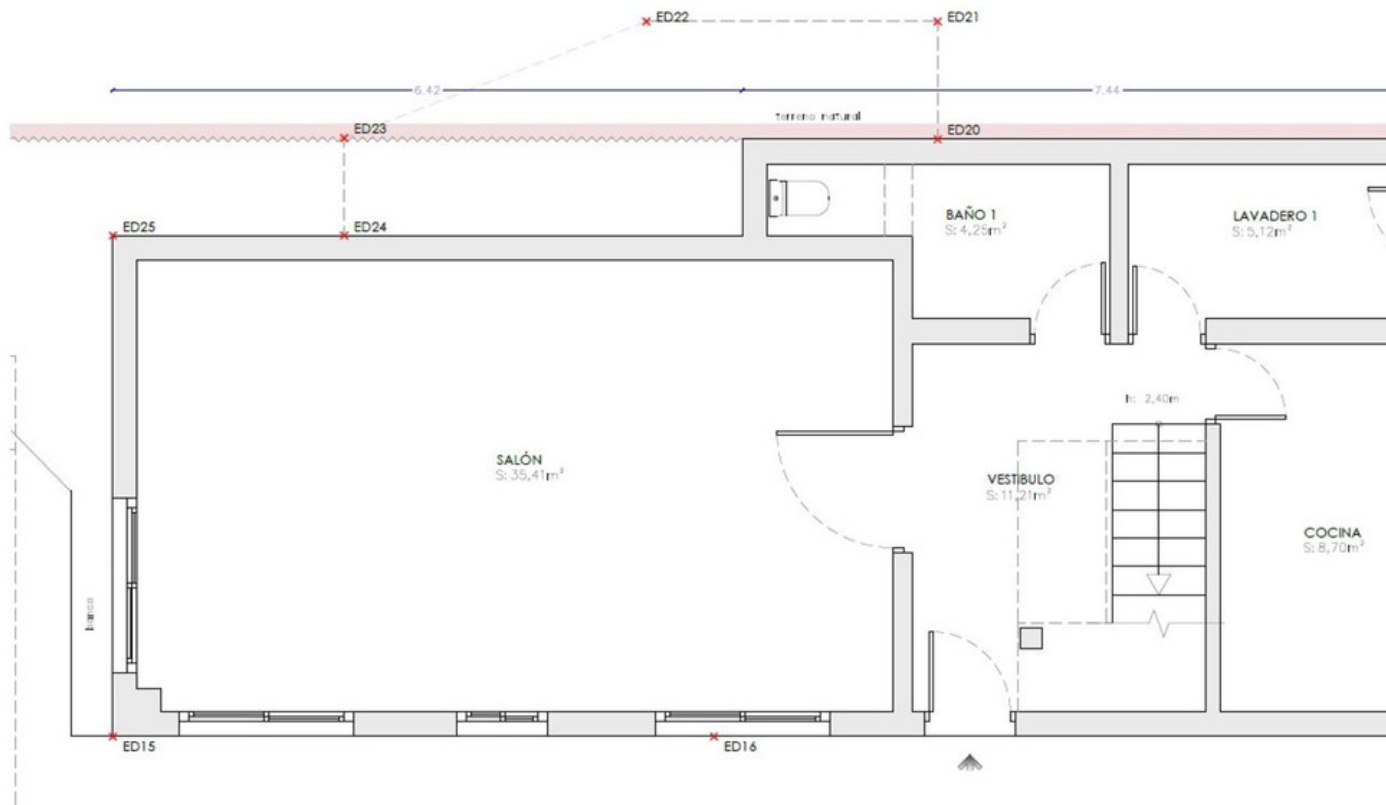












| CUADRO SUPERFICIES ÚTILES<br>POR PLANTA Y USO |                  |                     |
|---|------------------|---------------------|
| PLANTA/USO                                    |                  | SUPERFICIE          |
| PLANTA BAJA                                   |                  |                     |
| Vivienda-B                                    | Vestibulo        | 11,21m <sup>2</sup> |
|   | Salón            | 35,41m <sup>2</sup> |
|   | Cocina           | 8,70m <sup>2</sup>  |
|   | Baño 1           | 4,25m <sup>2</sup>  |
|   | C. Instalaciones | 5,12m <sup>2</sup>  |
|   | Porche Cubierto  | 27,52m <sup>2</sup> |
|   | TOTAL            | 92.21m <sup>2</sup> |
| PLANTA ALTA                                   |                  |                     |
| Vivienda-B                                    | Pasillo          | 10,23m <sup>2</sup> |
|   | Sala de Estar    | 10,87m <sup>2</sup> |
|   | Dormitorio 1     | 15,41m <sup>2</sup> |
|   | Dormitorio 2     | 16,59m <sup>2</sup> |
|   | Dormitorio 3     | 13,34m <sup>2</sup> |
|   | Dormitorio 4     | 12,66m <sup>2</sup> |
|   | Baño 2           | 3,59m <sup>2</sup>  |
|   | Baño 3           | 3,83m <sup>2</sup>  |
|   | Lavadero         | 3,12m <sup>2</sup>  |
|   | TOTAL            | 89.64m <sup>2</sup> |













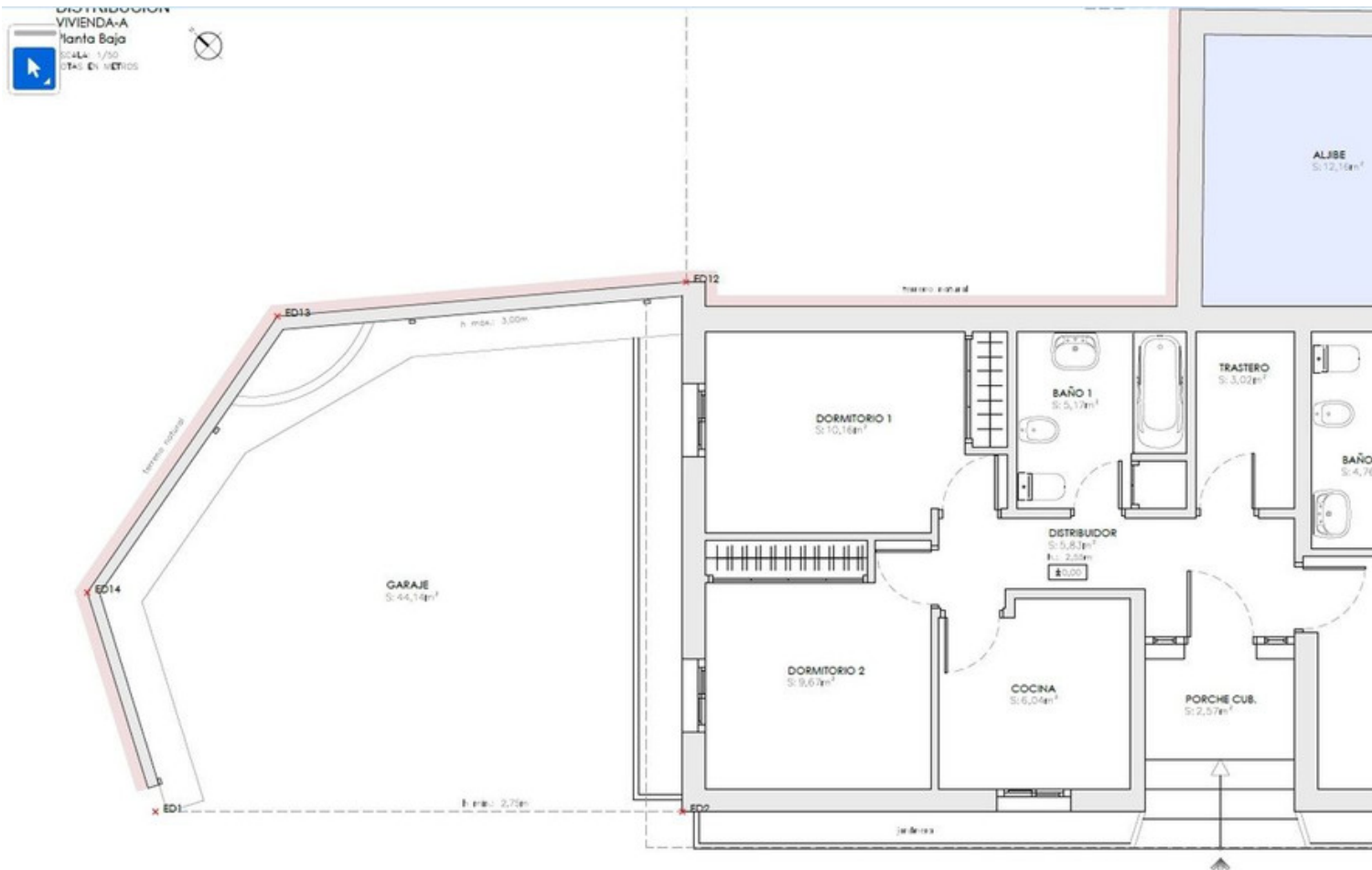




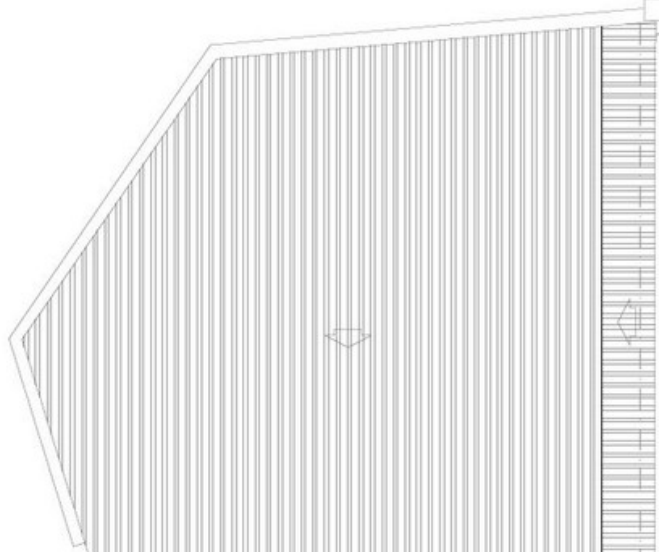












| CUADRO SUPERFICIES ÚTILES<br>POR PLANTA Y USO |                 |                      |
|---|-----------------|----------------------|
| PLANTA/USO                                    | SUPERFICIE      |                      |
| PLANTA BAJA                                   |                 |                      |
| Vivienda-A                                    | Distribuidor    | 5,83m <sup>2</sup>   |
|   | Salón           | 16,68m <sup>2</sup>  |
|   | Dormitorio 1    | 10,16m <sup>2</sup>  |
|   | Dormitorio 2    | 9,67m <sup>2</sup>   |
|   | Dormitorio 3    | 10,72m <sup>2</sup>  |
|   | Cocina          | 6,04m <sup>2</sup>   |
|   | Baño 1          | 5,17m <sup>2</sup>   |
|   | Baño 2          | 4,76m <sup>2</sup>   |
|   | Trastero        | 3,02m <sup>2</sup>   |
|   | Porche Cubierto | 2,57m <sup>2</sup>   |
|   | Garaje          | 44,14m <sup>2</sup>  |
|   | Almacén         | 10,54m <sup>2</sup>  |
|   | Aljibe          | 12,16m <sup>2</sup>  |
|   | TOTAL           | 141.46m <sup>2</sup> |



















