


Ref.-ID: MIBGR4626043

Elviria

Plot

 **443 m2**

 **1140 m2**

Discover this remarkable plot with views of the sea and mountains, boasting a generous area of 1,140m² and the necessary permit for constructing a 322m² villa, plus terrace and basement. The plot is strategically located with easy access and communication links, in close proximity to schools, shopping centers, and just a 5-minute drive from the beach. The project is meticulously designed in a modern style, seamlessly blending contemporary comfort with the natural beauty of its surroundings.

Setting

- ✓ Close To Golf
- ✓ Close To Shops
- ✓ Close To Schools
- ✓ Close To Forest
- ✓ Urbanisation

Utilities

- ✓ Electricity
- ✓ Drinkable Water
- ✓ Telephone
- ✓ Gas

Orientation

- ✓ South

Pool

- ✓ Private

Views

- ✓ Sea
- ✓ Mountain

Category

- ✓ Holiday Homes
- ✓ Investment
- ✓ Resale
- ✓ With Planning Permission

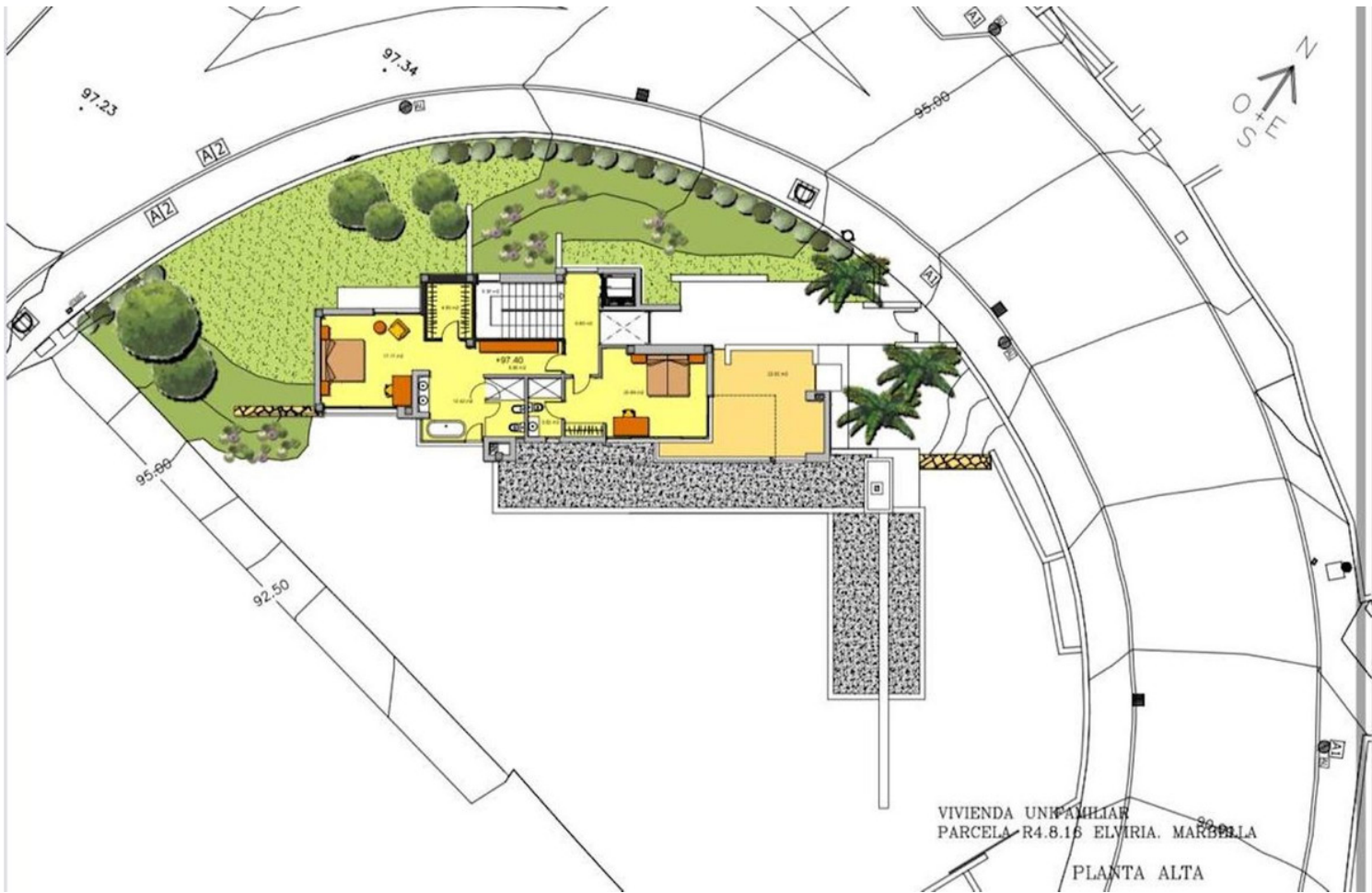












VIVIENDA UNIFAMILIAR
PARCELA R4.8.16 EL VIRIA. MARBELLA
PLANTA ALTA