

**Ref.-ID: MIBGR4630684**

**Mijas**

**House**



**3**



**2.5**



**278 m2**



**500 m2**

Off pan villa on a plot located on a hill in the urbanisation of Campo Mijas. The villa designed on 3 levels comprises: , - Basement level with private garage, installation and storage room, WC, office and access to the terraced pool area. - Ground Floor with entrance porch the living room, kitchen-diner, and guest bathroom. Patio doors open out to a terrace overlooking the pool. - Top Floor with 3 bedrooms, the master with en-suite & walk-in wardrobe, bedrooms 2 and 3 with fitted wardrobes and access to the upper terrace. The garden with pool will be landscaped with decorative plants and trees. The design of the villa will be adjusted to the client's taste with a wide range of options in design and qualities so the client can easily create his or her living spaces.

**Setting**

- ✓ Urbanisation

**Climate Control**

- ✓ Air Conditioning
- ✓ Central Heating
- ✓ U/F Heating
- ✓ U/F/H Bathrooms

**Kitchen**

- ✓ Fully Fitted

**Orientation**

- ✓ South

**Views**

- ✓ Mountain
- ✓ Garden
- ✓ Pool

**Garden**

- ✓ Private
- ✓ Landscaped

**Condition**

- ✓ New Construction

**Features**

- ✓ Covered Terrace
- ✓ Fitted Wardrobes
- ✓ Near Transport
- ✓ Private Terrace
- ✓ Storage Room
- ✓ Utility Room
- ✓ Ensuite Bathroom
- ✓ Double Glazing

**Parking**

- ✓ Underground
- ✓ Garage
- ✓ More Than One
- ✓ Private

**Pool**

- ✓ Private

**Furniture**

- ✓ Not Furnished
- ✓ Optional

**Category**

- ✓ Off Plan

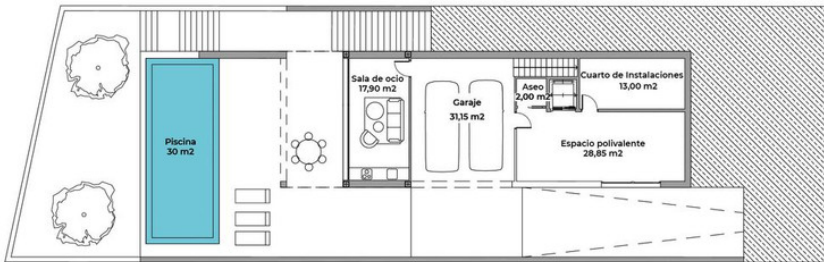


Imágenes y datos con caracter orientativos ( No corresponden con esta v





Nivel -1

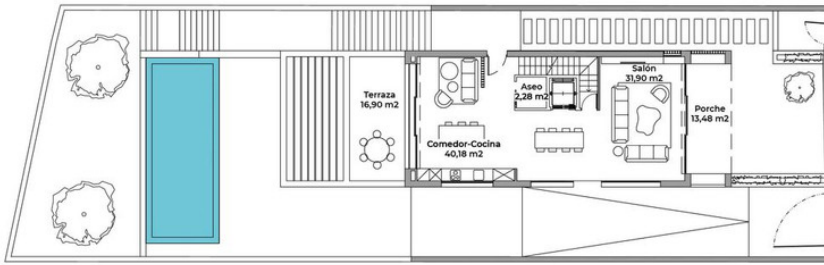


GENERALES:

Parcela	500m <sup>2</sup>
<b>TOTAL CONSTRUIDO</b>	<b>586 m<sup>2</sup></b>
Vivienda	278 m <sup>2</sup>
Accesos	98 m <sup>2</sup>
Piscina	30 m <sup>2</sup>
Terrazas	180 m <sup>2</sup>
Jardin	116 m <sup>2</sup>
Plazas Parking Cubierto	2 ud
Plazas Parking No Cubierto	0 ud

Los datos reflejados en este documento son orientativos, sin valor contractual

## Nivel 0

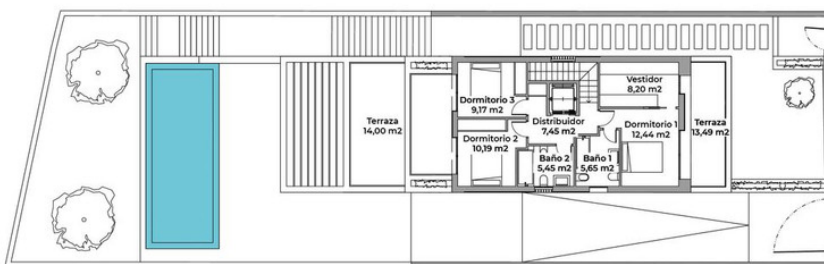


### GENERALES:

Parcela	500m <sup>2</sup>
<b>TOTAL CONSTRUIDO</b>	<b>586 m<sup>2</sup></b>
Vivienda	278 m <sup>2</sup>
Accesos	98 m <sup>2</sup>
Piscina	30 m <sup>2</sup>
Terrazas	180 m <sup>2</sup>
Jardin	116 m <sup>2</sup>
Plazas Parking Cubierto	2 ud
Plazas Parking No Cubierto	0 ud

Los datos reflejados en este documento son orientativos, sin valor contractual

## Nivel +1



### GENERALES:

Parcela	500m <sup>2</sup>
<b>TOTAL CONSTRUIDO</b>	<b>586 m<sup>2</sup></b>
Vivienda	278 m <sup>2</sup>
Accesos	98 m <sup>2</sup>
Piscina	30 m <sup>2</sup>
Terrazas	180 m <sup>2</sup>
Jardin	116 m <sup>2</sup>
Plazas Parking Cubierto	2 ud
Plazas Parking No Cubierto	0 ud

Los datos reflejados en este documento son orientativos, sin valor contractual