

Ref.-ID: MIBGR4693123

La Zagaleta

House



12



15



2400 m2



7000 m2

Heavily reduced by a motivated owner for a quick sale Beautifully presented mansion situated 5 minutes from North gate, 12 bedrooms which include staff accommodation, roof pool, indoor pool and spa, and outdoor pool with additional diving pool. the house would benefit from some modernisation Detached Villa, La Zagaleta, Costa del Sol. 12 Bedrooms, 15 Bathrooms, Built 2400 m², Terrace 200 m², Garden/Plot 7000 m². Setting : Close To Golf, Close To Forest. Orientation : South West. Condition : Good. Pool : Private, Indoor, Heated. Climate Control : Air Conditioning. Views : Sea, Mountain, Country, Panoramic, Garden. Features : Covered Terrace, Lift, Fitted Wardrobes, Private Terrace, Solarium, Gym, Sauna, Games Room, Storage Room, Utility Room, Ensuite Bathroom, Marble Flooring, Bar, Double Glazing, Staff Accommodation, Basement. Furniture : Part Furnished. Kitchen : Fully Fitted. Garden : Private. Security : Gated Complex, Alarm System, 24 Hour Security. Parking : Garage, More Than One. Utilities : Electricity. Category : Investment, Luxury.

Setting

- ✓ Close To Golf
- ✓ Close To Forest

Orientation

- ✓ South West

Condition

- ✓ Good

Pool

- ✓ Private
- ✓ Indoor
- ✓ Heated

Climate Control

- ✓ Air Conditioning

Views

- ✓ Sea
- ✓ Mountain
- ✓ Country
- ✓ Panoramic
- ✓ Garden

Features

- ✓ Covered Terrace
- ✓ Lift
- ✓ Fitted Wardrobes
- ✓ Private Terrace
- ✓ Solarium
- ✓ Gym
- ✓ Sauna
- ✓ Games Room
- ✓ Storage Room
- ✓ Utility Room
- ✓ Ensuite Bathroom
- ✓ Marble Flooring
- ✓ Bar
- ✓ Double Glazing
- ✓ Staff Accommodation
- ✓ Basement

Furniture

- ✓ Part Furnished

Kitchen

- ✓ Fully Fitted

Garden

- ✓ Private

Security

- ✓ Gated Complex
- ✓ Alarm System
- ✓ 24 Hour Security

Parking

- ✓ Garage
- ✓ More Than One

Utilities

- ✓ Electricity

Category

- ✓ Investment
- ✓ Luxury









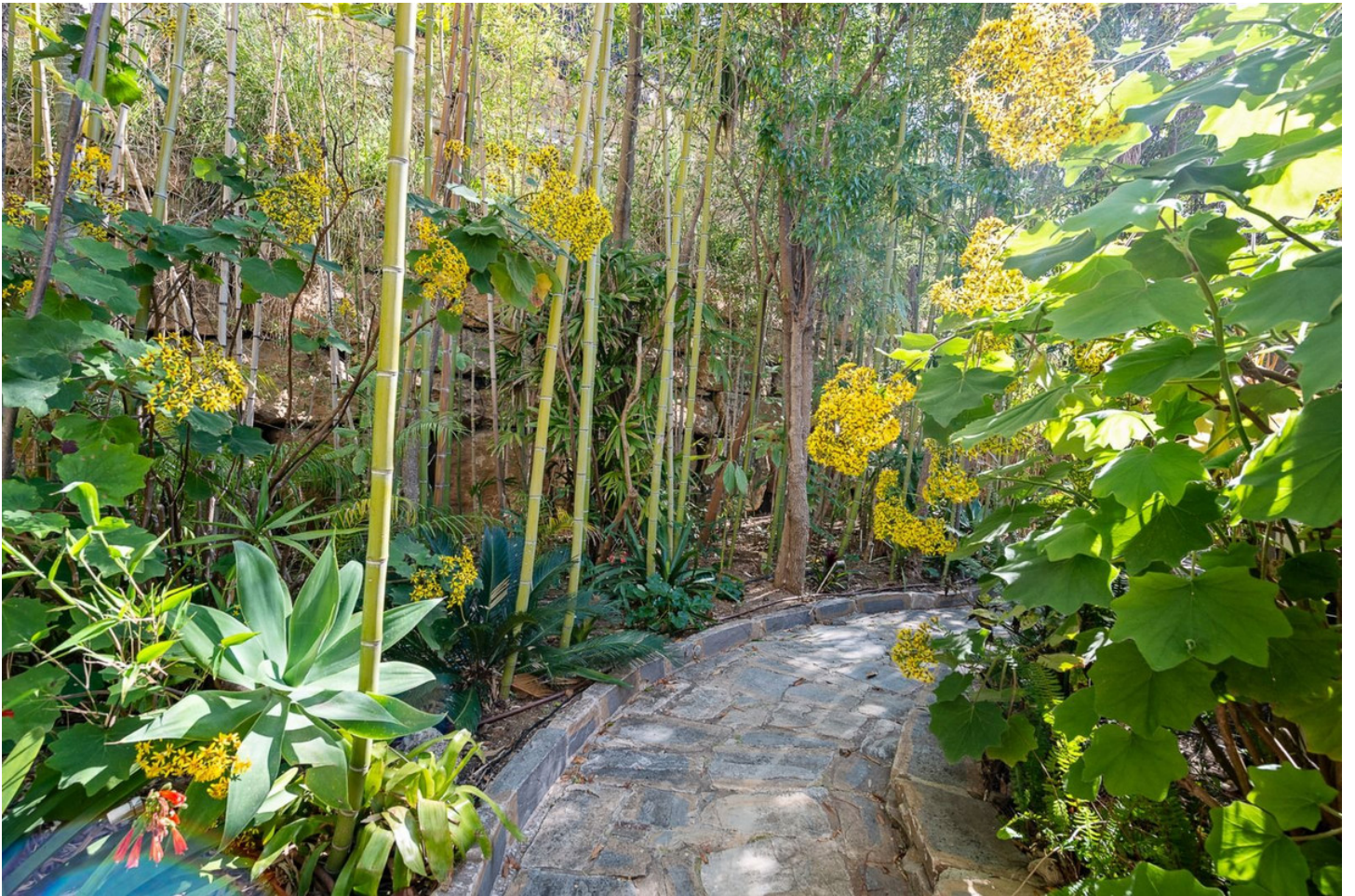


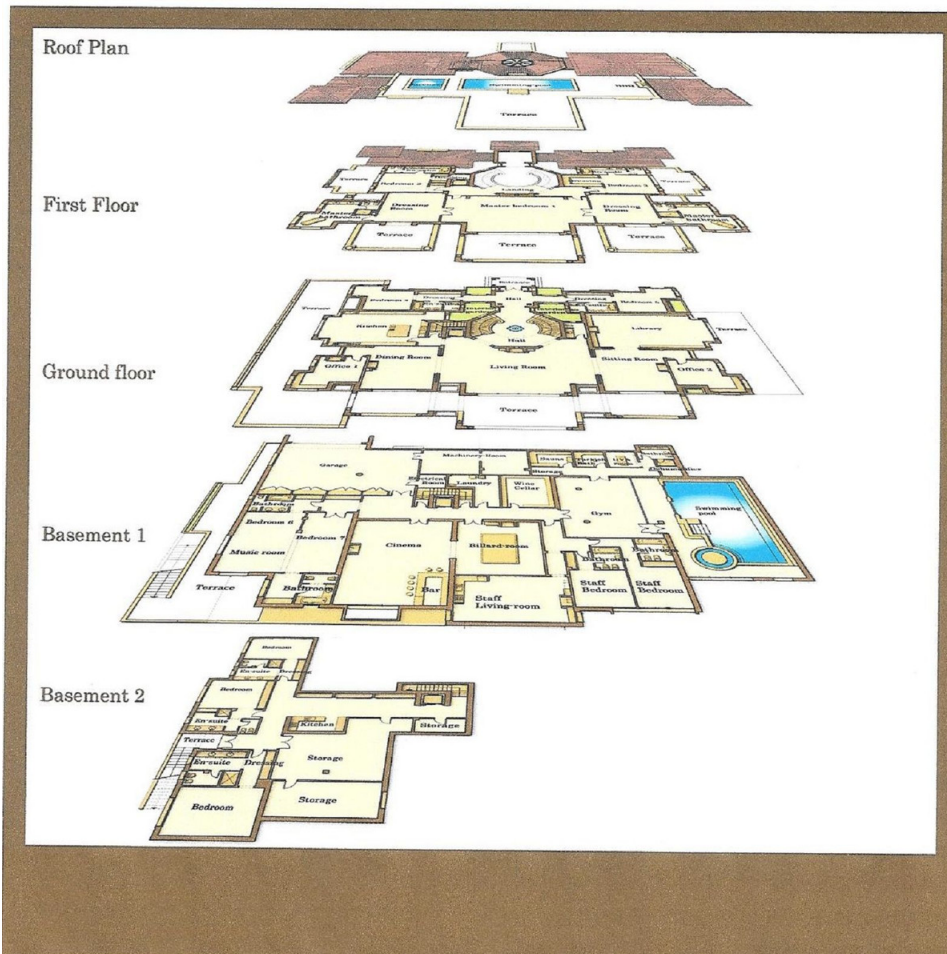








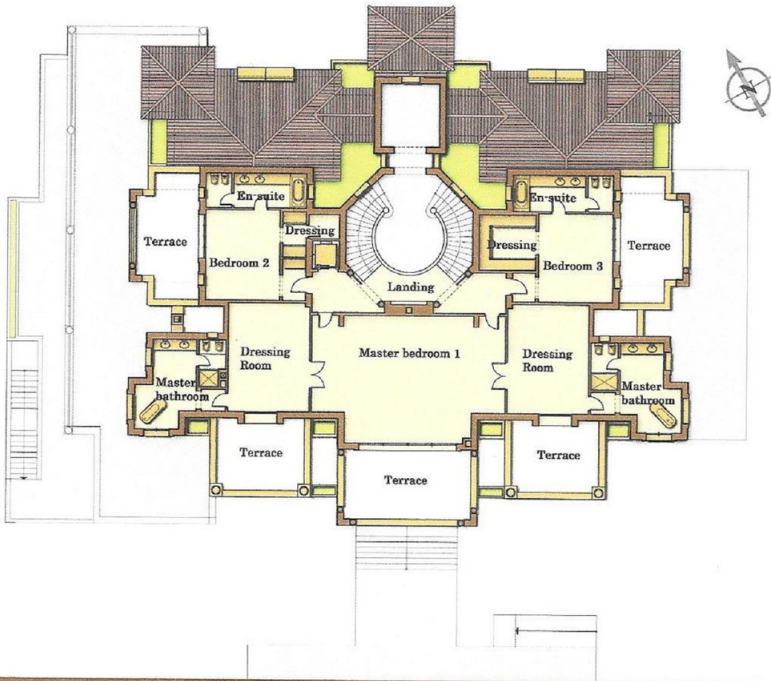




Internal Area: 317,90 m²

Terrace: 139,43 m²

0 1 2 3 4 5m



First floor



Internal Area: 509,20 m²
Terrace: 299,22 m²

0 1 2 3 4 m



Ground floor

Internal Area: 837,74 m²
Terrace: 76,35 m²

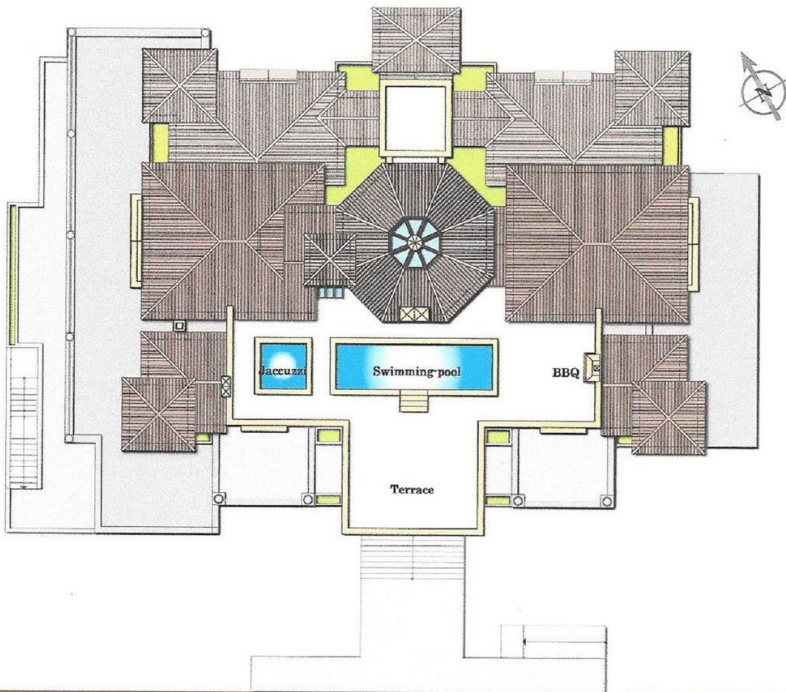
0 1 2 3 4 m



Basement 1

Terrace: 165,55 m²

0 1 2 3 4 5 m



Roof plan

Plot Area: 6.938,32 m²

0 4 8 12 16 m



Layout