



**Sales - Apartment - Marbella**  
**437.000€**

**[www.mibgroup.es](http://www.mibgroup.es)**  
**+34 662 58 96 58**  
**[info@mibgroup.es](mailto:info@mibgroup.es)**

Community: 1,908 EUR / year IBI: 603 EUR / year

Rubbish: 92 EUR / year



2



2



72 m2

\*\*\* Spectacular Duplex Apartment in Front of the Golf in Marbella \*\*\* 2 Bedrooms and 1 Bathroom \*\*\* Private Terrace and Solarium of 40 m2 \*\*\* Stunning Views of the Golf Course and La Concha Mountain \*\*\* Fully Equipped Renovated Kitchen Siemens \*\*\* Condition Excellent hours \*\*\* Marble Floors \*\*\* Centralized Air Conditioning \*\*\* Underground Parking Space \*\*\* Gated Complex with Swimming Pools, Fountains and Mature Gardens \*\*\* 24-hour Security and Concierge \*\*\* Location Ideal In Front of the Aloha Golf Course \*\*\* Easy Access to Marbella and Puerto Banús \*\*\* Surrounded by Golf Courses, Beaches, Restaurants, International Schools and Other Services \*\*\* Ask for the Video!!! \*\*\*

**Setting**

- ✓ Close To Golf
- ✓ Close To Port
- ✓ Close To Shops
- ✓ Close To Sea
- ✓ Close To Town
- ✓ Close To Schools
- ✓ Close To Forest
- ✓ Close To Marina
- ✓ Urbanisation

**Views**

- ✓ Mountain
- ✓ Golf
- ✓ Panoramic
- ✓ Garden
- ✓ Forest

**Garden**

- ✓ Communal
- ✓ Landscaped

**Category**

- ✓ Golf
- ✓ Holiday Homes
- ✓ Investment
- ✓ Luxury
- ✓ Resale
- ✓ Contemporary

**Condition**

- ✓ Excellent

**Features**

- ✓ Lift
- ✓ Fitted Wardrobes
- ✓ Near Transport
- ✓ Private Terrace
- ✓ Solarium
- ✓ Satellite TV
- ✓ WiFi
- ✓ Storage Room
- ✓ Ensuite Bathroom
- ✓ Marble Flooring
- ✓ Double Glazing
- ✓ Fiber Optic

**Security**

- ✓ Gated Complex
- ✓ Entry Phone
- ✓ Alarm System
- ✓ Safe

**Pool**

- ✓ Communal
- ✓ Children`s Pool

**Furniture**

- ✓ Optional

**Parking**

- ✓ Underground
- ✓ Garage
- ✓ Private

**Climate Control**

- ✓ Air Conditioning

**Kitchen**

- ✓ Fully Fitted

**Utilities**

- ✓ Electricity
- ✓ Drinkable Water
- ✓ Telephone
- ✓ Gas









































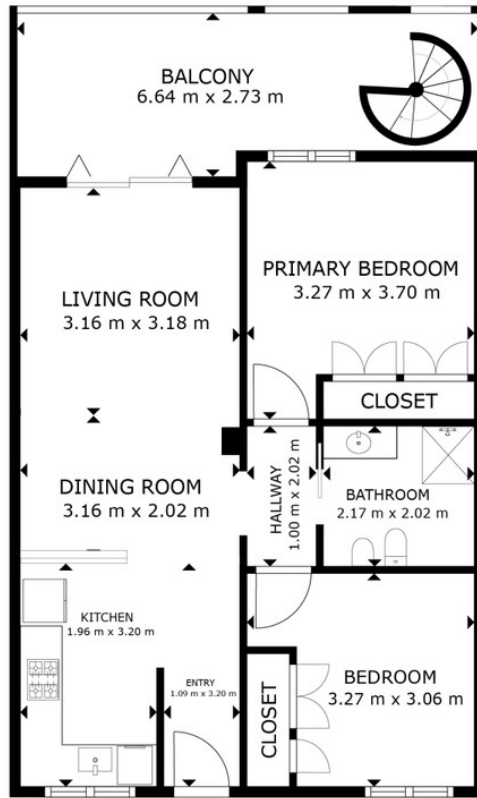












FLOOR PLAN

GROSS INTERNAL AREA  
 FLOOR PLAN: 57 m<sup>2</sup>  
 EXCLUDED AREA: BALCONY: 14 m<sup>2</sup>  
 SIZES AND DIMENSIONS ARE APPROXIMATE, ACTUAL MAY VARY.

