

Ref.-ID: MIBGR4751941

Fuengirola

Apartment

Community: 2,760 EUR / year IBI: 672 EUR / year

Rubbish: 83 EUR / year



2



2



138 m2



273 m2

Welcome to your dream home in the prestigious area of Higuero! This exquisite 2-bedroom penthouse offers unparalleled luxury and comfort with breathtaking sea views and a host of modern amenities. The Reserva del Higuero Housing Estate is an idyllic place offering the best views, an architectural style that adapts to the land's natural features and a wide variety of services. The entire area is granted safety, exclusiveness and wellbeing, as well as the satisfaction of the highest demands with every development. Key Features: Prime Location: Situated in the sought after area of Higuero, you are conveniently close to high-end restaurants, well equipped fitness center, tennis court and top-rated schools and the Higuero 5 stars hotel Enjoy unparalleled privacy in the community's highest penthouse, offering complete peace with no neighbouring units overlooking your space. Panoramic Sea Views: Revel in the serene and picturesque sea views right from your home, providing a constant reminder of the beauty that surrounds you. Tropical Gardens: The complex features beautifully landscaped tropical gardens and 2 pools, offering a peaceful and lush environment to unwind and enjoy nature. Modern Amenities: Benefit from the exclusive amenities within the complex, including 2 swimming pools, spa, tennis courts, and a well-equipped fitness center. Additional Features: Fireplace Two spacious bedrooms with direct access to the terrace EASY Possibility of converting it into a 3 bedroom 5 electric awnings Higuero bus that takes you to the beach in Carvajal and shopping area including restaurants, pharmacy and Carrefour supermarket Laundry room Secure underground parking and storage room. Only 20 minutes away from the airport! 135m2 Built + 138m2 Terrace

Setting

- ✓ Beachside
- ✓ Close To Port
- ✓ Close To Town
- ✓ Close To Schools

Pool

- ✓ Private

Climate Control

- ✓ Air Conditioning
- ✓ Fireplace

Views

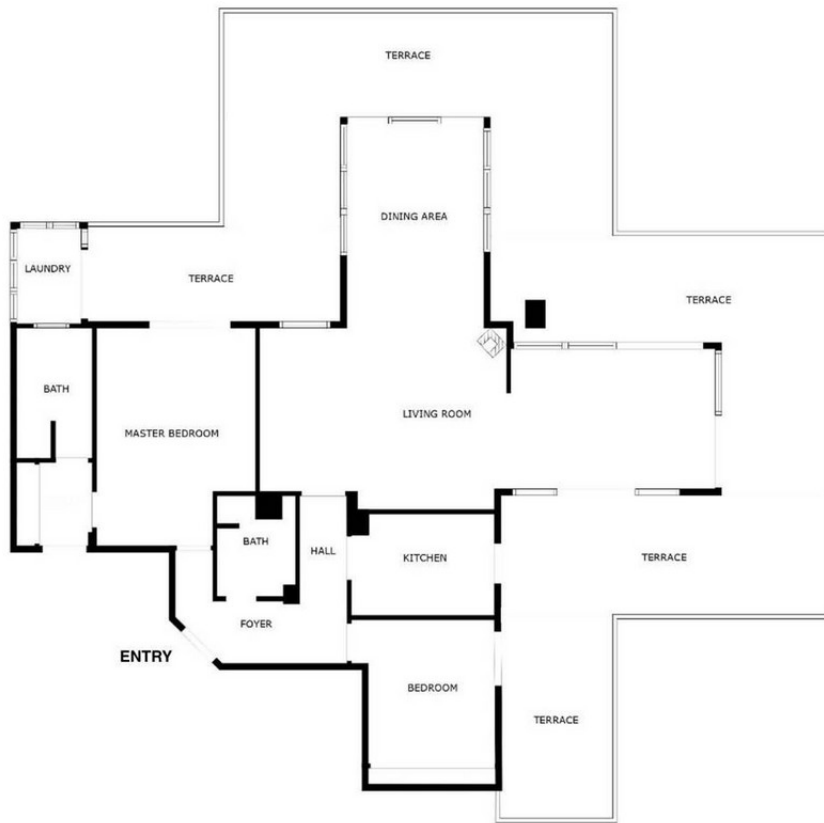
- ✓ Sea
- ✓ Mountain
- ✓ Panoramic

Features

- ✓ Lift
- ✓ Fitted Wardrobes
- ✓ Near Transport
- ✓ Private Terrace
- ✓ Satellite TV
- ✓ Storage Room
- ✓ Ensuite Bathroom
- ✓ Double Glazing
- ✓ Basement
- ✓ Fiber Optic







SIZES ARE APPROXIMATE, ACTUAL MAY VARY.











