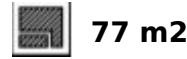


Ref.-ID: MIBGR4753687

Estepona

Apartment

Community: 1,344 EUR / year



Central Living from Above! To find a brand new modern penthouse with a rooftop terrace that allows you to walk to the Old Town of Estepona in 5 minutes is quite rare. This property boasts all the features needed for modern living with a few features that will delight you. It offers 2 Bedrooms, 2 Bathrooms, with 77m2 built and more than 50m2 of outside space. We have the developers floor plans. Furthermore, you have 1 underground parking space and a storage room. What is really interesting is that furniture as well as a jacuzzi, all brand new, is included. The furniture has been chosen at a considerable expense and offers you are an immediate holiday home or rental business with an attached property manager should you wish. Lastly, as this is a new property being resold, there is less to pay in taxes and all snagging has been completed. The community offers a large pool, outdoor gym, as well as kids playground and an indoor gym to come. Estepona is such an interesting place to invest right now, winning awards, with the fantastic mayor continuing to make it one of the top destinations in Southern Europe. Come get some!

Setting

- ✓ Town
- ✓ Close To Shops
- ✓ Urbanisation

Climate Control

- ✓ Air Conditioning

Kitchen

- ✓ Fully Fitted

Utilities

- ✓ Electricity

Orientation

- ✓ South

Views

- ✓ Mountain
- ✓ Urban

Garden

- ✓ Communal

Category

- ✓ Holiday Homes
- ✓ Resale
- ✓ Contemporary

Condition

- ✓ Excellent
- ✓ New Construction

Features

- ✓ Lift
- ✓ Fitted Wardrobes
- ✓ Near Transport
- ✓ Private Terrace
- ✓ Ensuite Bathroom

Security

- ✓ Gated Complex
- ✓ Entry Phone

Pool

- ✓ Communal

Furniture

- ✓ Fully Furnished

Parking

- ✓ Underground





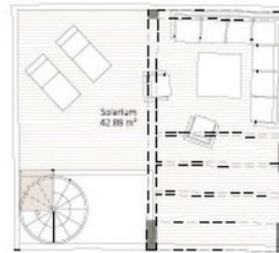












C/ DÁMASO ALONSO
Estepona, Málaga

BLOQUE 6
Planta Tercera. Vivienda B



SUPERFICIES	m ²
ÚTIL CERRADA	6504
ÚTIL EXTERIOR	5029
ÚTIL TOTAL (w/Decreto 218/2005)	7203
CONSTRUIDA CERRADA	7123
CONSTRUIDA EXTERIOR (Lavadero + Terraza)	1182
CONSTRUIDA + Z.C. (w/Decreto 218/2005)	1642
CONSTRUIDA + Z.C.	807

Escala Gráfica 1:100



GESTIONA



PROMUEVE

HELIUM RESIDENCES
SIERRA DE ESTEPONA, S.L.U.