

**Ref.-ID: MIBGR4781017**

**Puerto Banús**

**House**

**Community: 2,040 EUR / year IBI: 1,240 EUR / year**

**Rubbish: 184 EUR / year**



**3**



**2**



**140 m2**

Welcome to this corner townhouse in Azalea Beach with an unbeatable location on the beachside between Puerto Banús and San Pedro de Alcántara! This cozy townhouse offers 3 bedrooms, 2 bathrooms and a guest toilet. By the entrance to the property you have a spacious private terrace, perfect for a chill out area with evening sun. As you enter the property, on the entrance level you will find a guest toilet, kitchen, living and dining room. From the living room you have access to the back terrace and garden area. On the upper level you will find 3 bedroom and 2 bathrooms. The master bedroom has an en-suite bathroom and a small terrace. The urbanization has beautiful gardens and 5 swimming pools. Garage included in the price. Welcome!

**Setting**

- ✓ Beachside
- ✓ Close To Shops
- ✓ Close To Sea
- ✓ Close To Town
- ✓ Close To Schools
- ✓ Close To Marina

**Climate Control**

- ✓ Air Conditioning

**Parking**

- ✓ Garage

**Orientation**

- ✓ South East

**Furniture**

- ✓ Fully Furnished

**Condition**

- ✓ Excellent

**Kitchen**

- ✓ Fully Fitted

**Pool**

- ✓ Communal

**Security**

- ✓ Gated Complex

















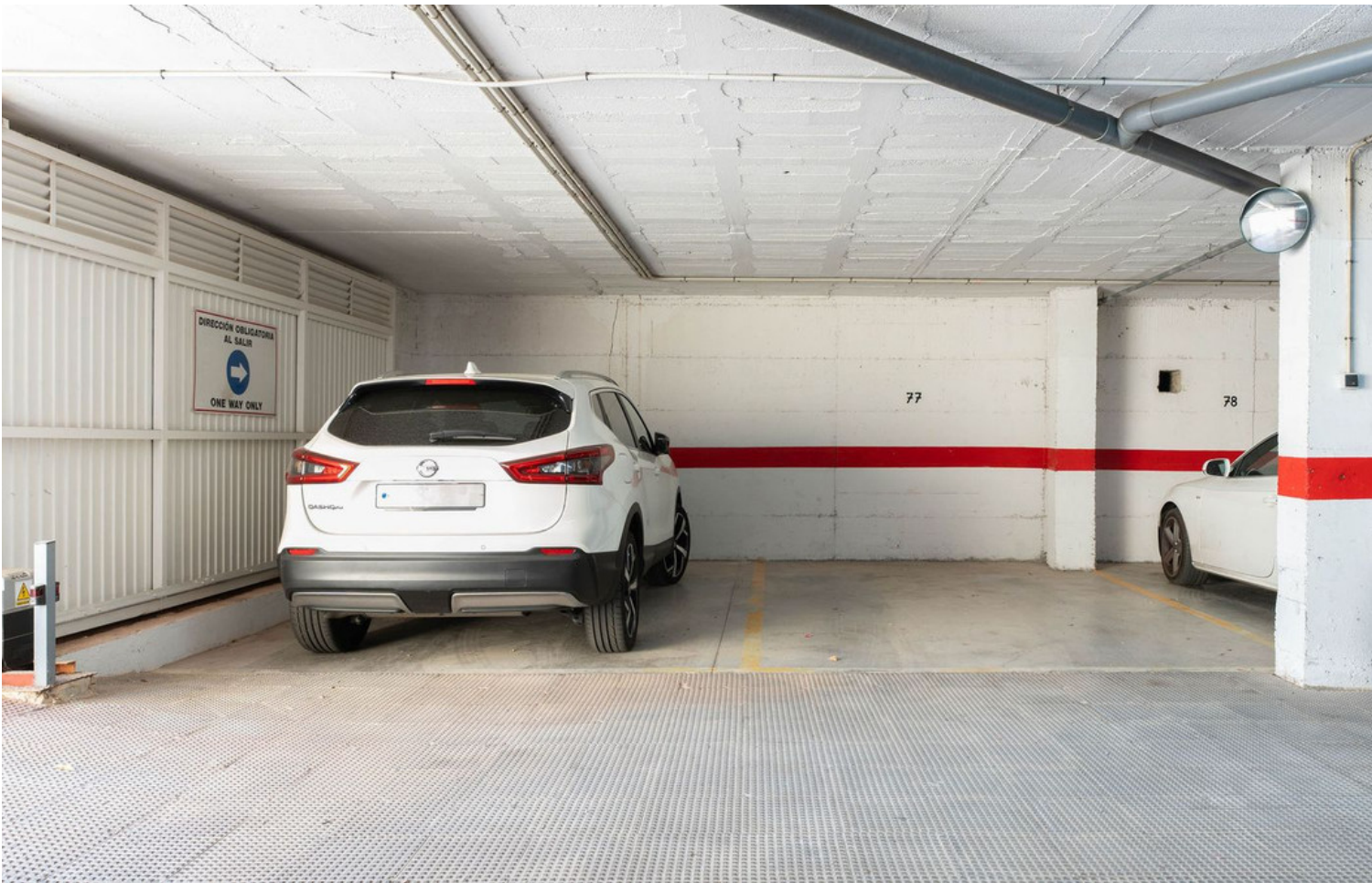








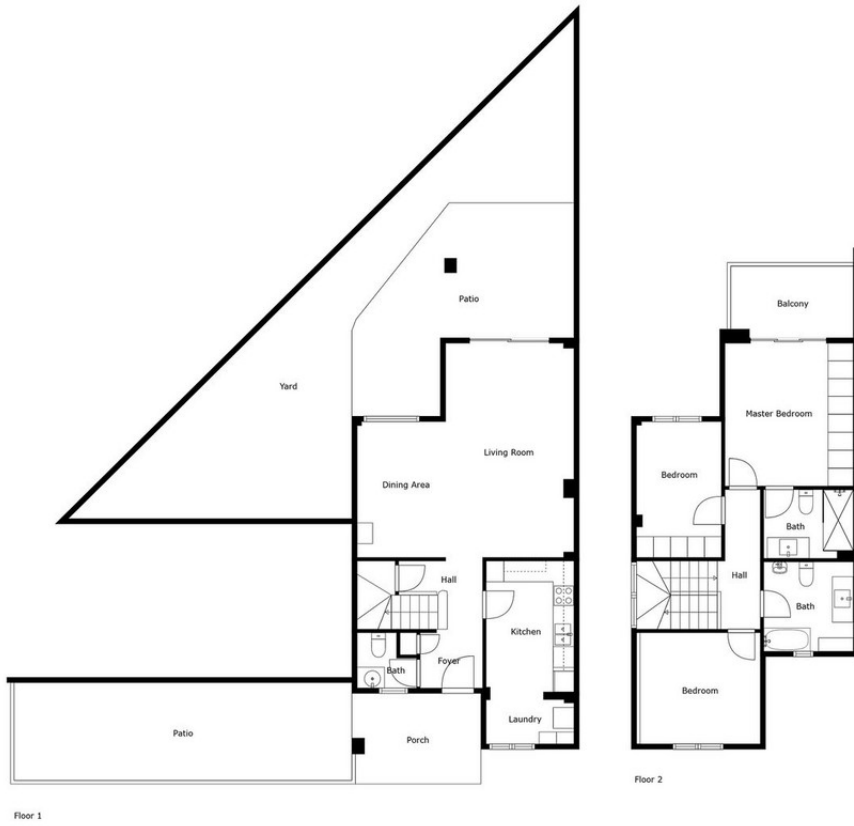












Floor 1

Floor 2

Measurements Calculated Are Deemed Highly Reliable But Are Not Guaranteed