

Ref.-ID: MIBGR4797481

Coín

House

Community: 1,200 EUR / year IBI: 400 EUR / year

Rubbish: 150 EUR / year



Lovely townhouse in Coín, in the well known community of Los Nebrales. With a constructed area of 200m², this property has 3 large bedrooms, 3 bathrooms (one of which is en-suite) and an attractive spacious living room. The generously sized kitchen is connected to an interior terrace, perfect for enjoying moments of tranquillity, outdoor dining and barbecues with friends and loved ones. In addition, the house has a patio on the ground floor and a solarium offering panoramic views, ideal for enjoying the Andalusian climate. The property is located in a very friendly gated community, which offers a variety of amenities, including a communal swimming pool and beautiful mature gardens. Residents will enjoy a riverside park in the community, as well as a secure environment thanks to the surveillance cameras and security entrance. With 2 parking spaces in the private garage and 2 additional parking spaces outside, access and convenience are guaranteed. Additional features include air conditioning and central heating, a fireplace for cooler days, and double glazed windows ensuring a quiet and comfortable environment. The property is also equipped with an alarm system, electric blinds and fibre optic internet access. The bedrooms have fitted wardrobes, and the bathrooms are fully equipped, adding a touch of luxury.

Setting

- ✓ Close To Shops
- ✓ Close To Town
- ✓ Close To Schools

Climate Control

- ✓ Air Conditioning
- ✓ Central Heating
- ✓ Fireplace

Garden

- ✓ Private

Orientation

- ✓ South East

Views

- ✓ Mountain
- ✓ Country
- ✓ Panoramic
- ✓ Garden
- ✓ Urban
- ✓ Street

Security

- ✓ Electric Blinds
- ✓ Alarm System

Condition

- ✓ Excellent

Features

- ✓ Covered Terrace
- ✓ Fitted Wardrobes
- ✓ Satellite TV
- ✓ Ensuite Bathroom
- ✓ Barbeque
- ✓ Double Glazing

Parking

- ✓ Private

Pool

- ✓ Communal

Furniture

- ✓ Not Furnished





































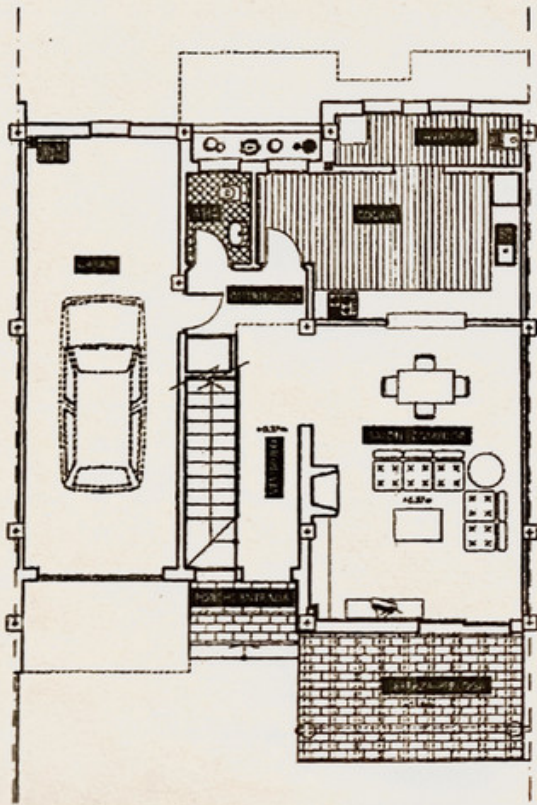




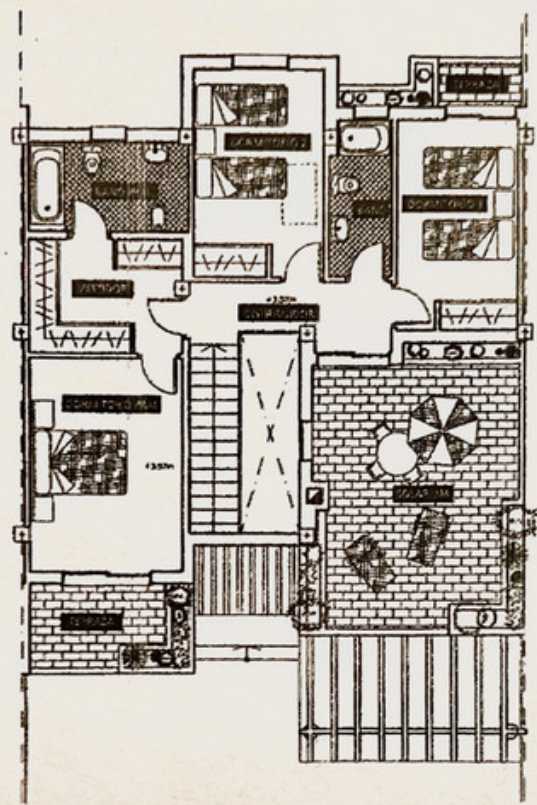




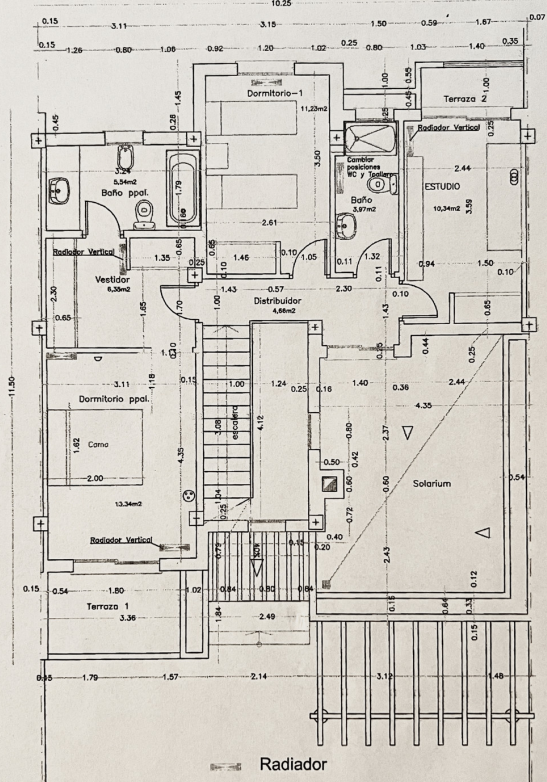
PLANTA BAJA GROUND FLOOR




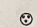
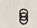
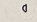
PLANTA ALTA UPPER FLOOR

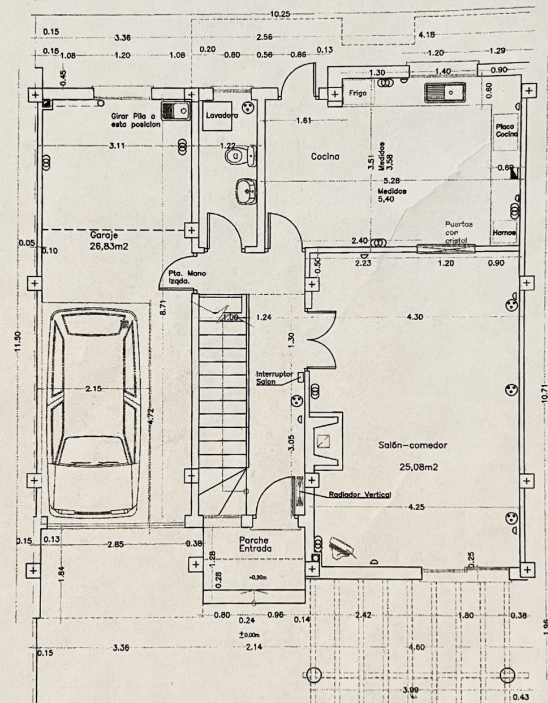


PLANTA

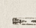
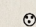
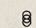
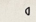


VIVIENDA Nº 7
 PLANTA ALTA
 E 1/50

-  Radiador
-  Base Enchufe 15A c/TT
-  Base 3 Enchufes 15A c/TT
-  Punto de Luz en Pared



VIVIENDA Nº 7
 PLANTA BAJA
 E 1/50

-  Radiador
-  Base Enchufe 15A c/TT
-  Base 3 Enchufes 15A c/TT
-  Punto de Luz en Pared