

Ref.-ID: MIBGR4831087

Benalmadena

Apartment

Community: 624 EUR / year

IBI: 371 EUR / year

Rubbish: 169 EUR / year



2



1



90 m2

Located in the heart of Benalmadena offers a perfect blend of comfort and convenience. Located minutes away from the beach, train station, restaurants and shops around. This cosy Apartment features partial sea views Beautiful new kitchen, 2 Doubles Bedrooms 1 Large Bathroom, the open plan layout maximizes space and light. Weather you are looking for a permanent residence or a vacational gateway this apartment is a wonderful opportunity. Ready to move in. Another advantage is that although the property does not have a garage, a nearby parking space can be rented for around 30€ per month at Parking de Pueblosol. Additionally, there is always parking available on the Tivoli. Location, Transport links, Tourism opportunities this is your apartment!! Close to the Marina, Sports centers, Bars Everything is around you. Contact me to arrange a viewing today

Setting

- ✓ Town
- ✓ Close To Shops
- ✓ Close To Sea
- ✓ Close To Town
- ✓ Close To Schools
- ✓ Marina

Views

- ✓ Sea
- ✓ Panoramic

Utilities

- ✓ Telephone

Orientation

- ✓ South East

Features

- ✓ Lift
- ✓ Fitted Wardrobes
- ✓ Near Transport
- ✓ Double Glazing
- ✓ Near Church

Condition

- ✓ Excellent

Furniture

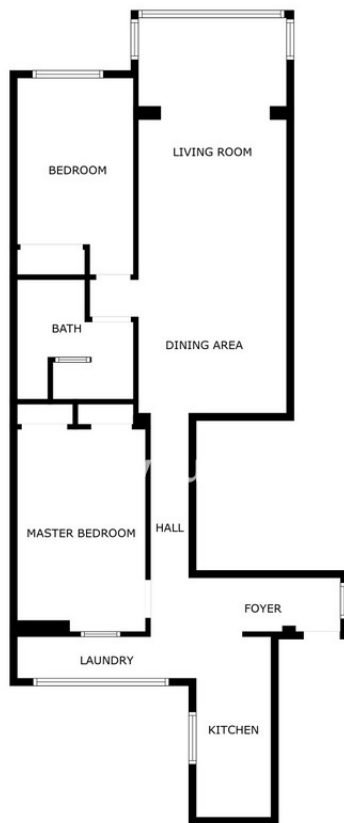
- ✓ Fully Furnished

Climate Control

- ✓ Air Conditioning

Kitchen

- ✓ Fully Fitted



SIZES ARE APPROXIMATE, ACTUAL MAY VARY.













