

**Ref.-ID: MIBGR4849093**

**Fuengirola**

**Apartment**



**2**



**2**



**136 m2**

Discover this exceptional property in the heart of Fuengirola, featuring two well-appointed 1-bedroom, 1-bathroom apartments. Recently renovated completely (including electrical wiring and plumbing), all the furniture is brand new. Perfectly situated just a minute's walk from the stunning coastline, this investment opportunity is ideal for those looking to tap into the thriving tourist market, as it is currently awaiting a tourist license. Each apartment boasts a cozy bedroom and a modern bathroom. The central location provides easy access to a wide variety of dining and shopping options, from local tapas bars to international cuisine, all just a short stroll away. You'll also find nearby parks and beach access. Healthcare services are easily accessible, with a pharmacy and hospital in close proximity, while schools and a commercial center add to the convenience of the area. Whether you're looking to invest or seeking a personal retreat, this location offers the best of coastal living combined with all the conveniences of urban life.

**Setting**

- ✓ Town
- ✓ Commercial Area
- ✓ Beachside
- ✓ Port
- ✓ Village
- ✓ Close To Port
- ✓ Close To Shops
- ✓ Close To Sea
- ✓ Close To Schools
- ✓ Marina
- ✓ Close To Marina

**Views**

- ✓ Urban
- ✓ Street

**Utilities**

- ✓ Electricity
- ✓ Drinkable Water
- ✓ Telephone

**Orientation**

- ✓ South East
- ✓ South West

**Features**

- ✓ Lift
- ✓ Fitted Wardrobes
- ✓ Near Transport
- ✓ Near Mosque
- ✓ Near Church

**Category**

- ✓ Cheap
- ✓ Holiday Homes
- ✓ Investment
- ✓ Resale

**Condition**

- ✓ Excellent
- ✓ Good
- ✓ Recently Renovated
- ✓ Recently Refurbished

**Furniture**

- ✓ Fully Furnished

**Climate Control**

- ✓ Air Conditioning
- ✓ Hot A/C
- ✓ Cold A/C

**Kitchen**

- ✓ Fully Fitted







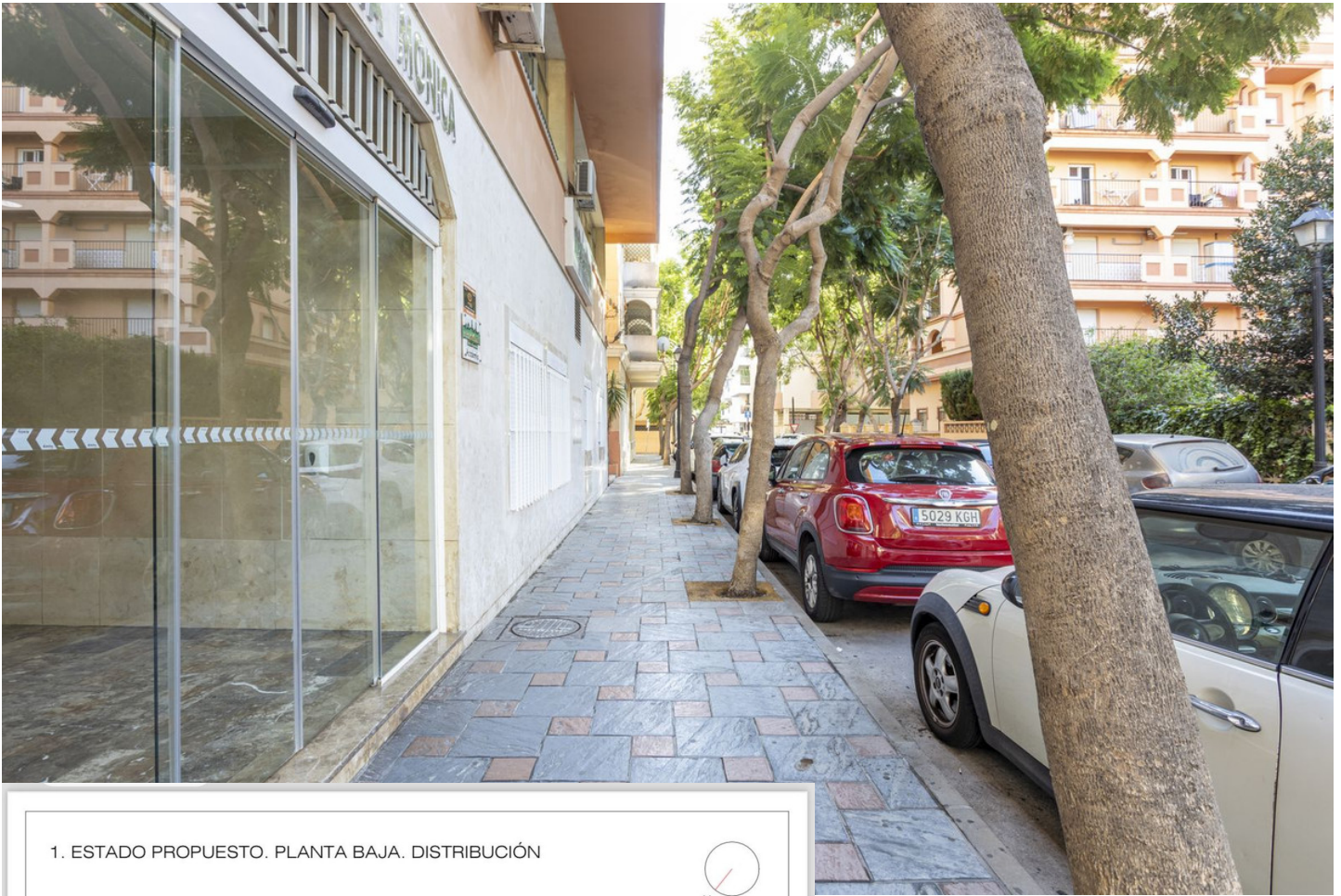




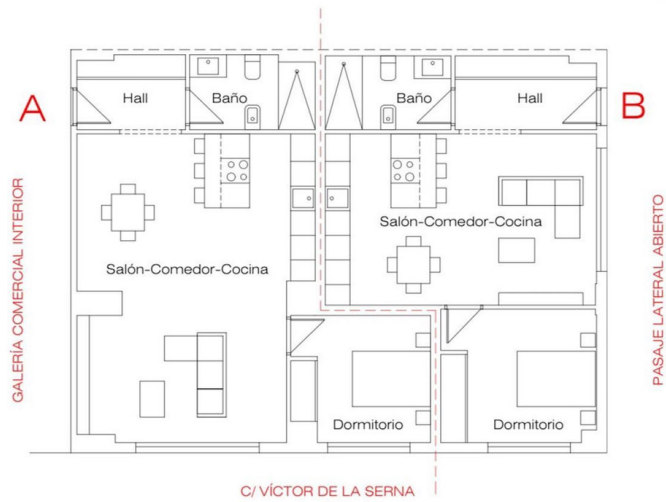








1. ESTADO PROPUESTO. PLANTA BAJA. DISTRIBUCIÓN



SUPERFICIES VIVIENDA A

Hall	4,70 m <sup>2</sup>
Salón-Comedor-Cocina	40,02 m <sup>2</sup>
Dormitorio	9,17 m <sup>2</sup>
Baño	5,43 m <sup>2</sup>
<b>SUPERFICIE ÚTIL</b>	<b>59,32 m<sup>2</sup></b>
<b>SUP. CONSTRUIDA</b>	<b>69,38 m<sup>2</sup></b>

SUPERFICIES VIVIENDA B

Hall	6,07 m <sup>2</sup>
Salón-Comedor-Cocina	27,50 m <sup>2</sup>
Dormitorio	10,73 m <sup>2</sup>
Baño	5,50 m <sup>2</sup>
<b>SUPERFICIE ÚTIL</b>	<b>49,80 m<sup>2</sup></b>
<b>SUP. CONSTRUIDA</b>	<b>58,66 m<sup>2</sup></b>

