

Ref.-ID: MIBGR4854478

Benalmadena

Apartment

Community: 3,864 EUR / year



3



2



130 m2



133 m2

Indulge in the ultimate luxury lifestyle with this brand-new 3-bedroom apartment located in the sought-after Reserva del Higuerón, Benalmádena. This exquisite property boasts unobstructed views to the mountains and sea, with a private outdoor space designed to offer the perfect combination of relaxation and entertainment. The expansive terrace is the true centerpiece of this home, featuring a private pool, a beautifully landscaped garden, and a cozy fire pit—ideal for enjoying the serene evenings. Whether you're swimming in your pool, lounging in the sun, or gathering around the fire pit with friends and family, this terrace offers an idyllic outdoor living experience. The terrace flows seamlessly from the spacious open-plan living area, making it perfect for indoor-outdoor entertaining or quiet nights at home. Inside, the apartment is equally impressive, with a modern, fully equipped kitchen, top-of-the-line appliances, and has been fully custom designed by a Soledad Merchán. Each of the three bedrooms is designed with comfort and style in mind, offering ample natural light and the master bedroom includes a luxurious ensuite bathroom and walk in wardrobe. The property features underfloor heating throughout , 2 parking spaces and a storage room. The 3rd bedroom is currently being used as an office space. As part of the exclusive 16+ Collection, residents have access to a beautiful communal pool and co-working space along with world-class amenities with the Higueron Hotel including a fitness center, spa, multiple indoor and outdoor pools, numerous gourmet dining options, beach club and more! Located just minutes drive from the beach and close to both Málaga and Marbella, this property provides the perfect balance of luxurious seclusion and vibrant coastal living. Don't miss the opportunity to own this stunning retreat, where every detail has been designed to enhance your luxury living experience.

Setting

- ✓ Town
- ✓ Close To Golf
- ✓ Close To Port
- ✓ Close To Shops
- ✓ Close To Sea
- ✓ Close To Town
- ✓ Close To Schools
- ✓ Close To Forest
- ✓ Close To Marina
- ✓ Urbanisation

Climate Control

- ✓ Hot A/C
- ✓ Cold A/C
- ✓ Fireplace

Kitchen

- ✓ Fully Fitted

Utilities

- ✓ Electricity
- ✓ Drinkable Water

Orientation

- ✓ South West

Views

- ✓ Sea
- ✓ Mountain
- ✓ Panoramic
- ✓ Garden
- ✓ Pool

Garden

- ✓ Communal
- ✓ Private

Category

- ✓ Holiday Homes
- ✓ Luxury
- ✓ Contemporary

Condition

- ✓ Excellent
- ✓ New Construction

Features

- ✓ Covered Terrace
- ✓ Lift
- ✓ Fitted Wardrobes
- ✓ Near Transport
- ✓ Private Terrace
- ✓ WiFi
- ✓ Gym
- ✓ Tennis Court
- ✓ Guest Apartment
- ✓ Storage Room
- ✓ Utility Room
- ✓ Ensuite Bathroom
- ✓ Barbeque
- ✓ Double Glazing
- ✓ Fiber Optic

Security

- ✓ Gated Complex
- ✓ Entry Phone

Pool

- ✓ Communal
- ✓ Private

Furniture

- ✓ Fully Furnished

Parking

- ✓ Underground
- ✓ Private











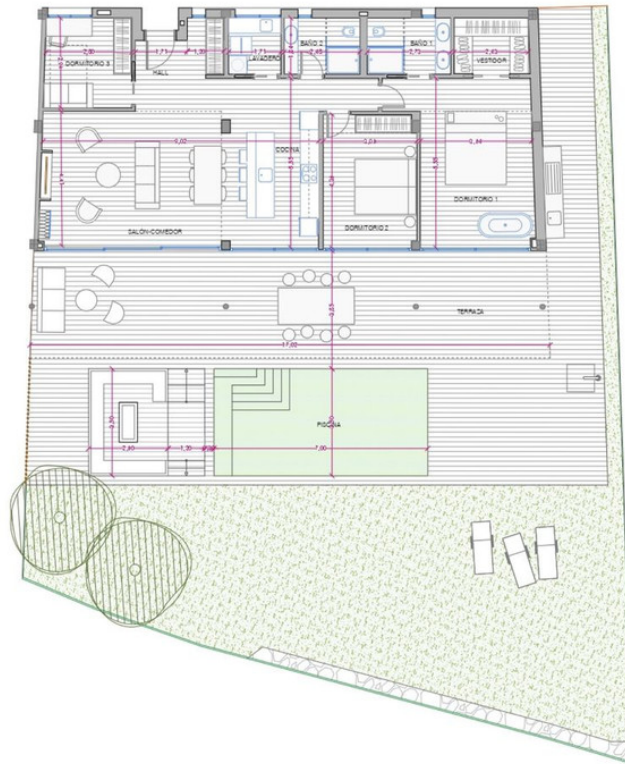












SUPERFICIE CONSTRUIDA DE VIVIENDA..... 130.00 m²
 SUPERFICIE CONSTRUIDA DE TERRAZA..... 126.85 m²
 SUPERFICIE DE PISCINA..... 31.35 m²
 SUPERFICIE DE JARDIN..... 133.18 m²
 SUP. EXTERIOR TOTAL..... 291.38 m²

