

Ref.-ID: MIBGR4861150

Campo Mijas

House



4



2



252 m2



1105 m2

Magnificent villa located in the Campomijas urbanization. The property boasts a built area of 252 m² on a 1,105 m² plot, offering complete privacy, as it is visually isolated from neighbors, and with its southeast orientation, it allows you to enjoy the pleasant climate fully. The house features three bedrooms and two bathrooms, distributed between the upper floor and a spacious independent room on the lower floor. The main living room is large, equipped with a fireplace, and has direct access to the porch and garden. The fully equipped kitchen includes a dining area. The property also has a separate wooden lounge with three-way access from inside and outside the house. This additional space is perfect for a leisure room, children's playroom, gym, or storage. On the side of the spacious garden, there is a wooden pergola used for parking, and the swimming pool is centrally located in the outdoor area. Nearby services: 5 schools and 6 supermarkets within a 1.3 km radius. Distances: 3 km from Fuengirola center. 7 km from Mijas Pueblo. 11 km from La Cala de Mijas. 25 km from Malaga airport. This villa combines comfort, privacy, and the potential for expansion, all in a prime location. It is ideal for those seeking seclusion without sacrificing proximity to Fuengirola's vibrant commercial and leisure life.

Setting

- ✓ Close To Shops
- ✓ Close To Town
- ✓ Close To Schools

Features

- ✓ Covered Terrace
- ✓ Fitted Wardrobes
- ✓ Private Terrace
- ✓ Guest Apartment
- ✓ Guest House

Pool

- ✓ Private

Security

- ✓ Alarm System

Climate Control

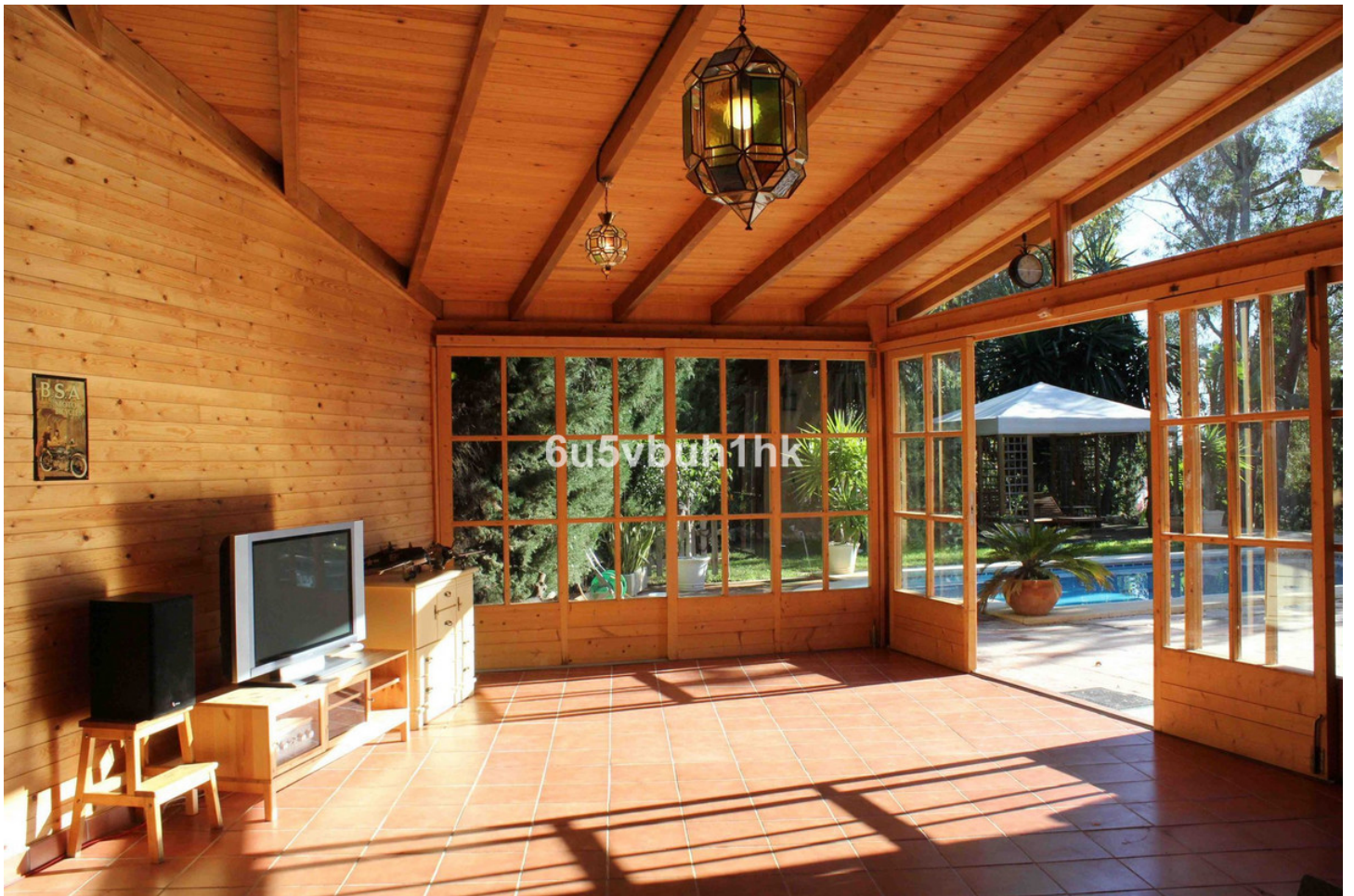
- ✓ Fireplace

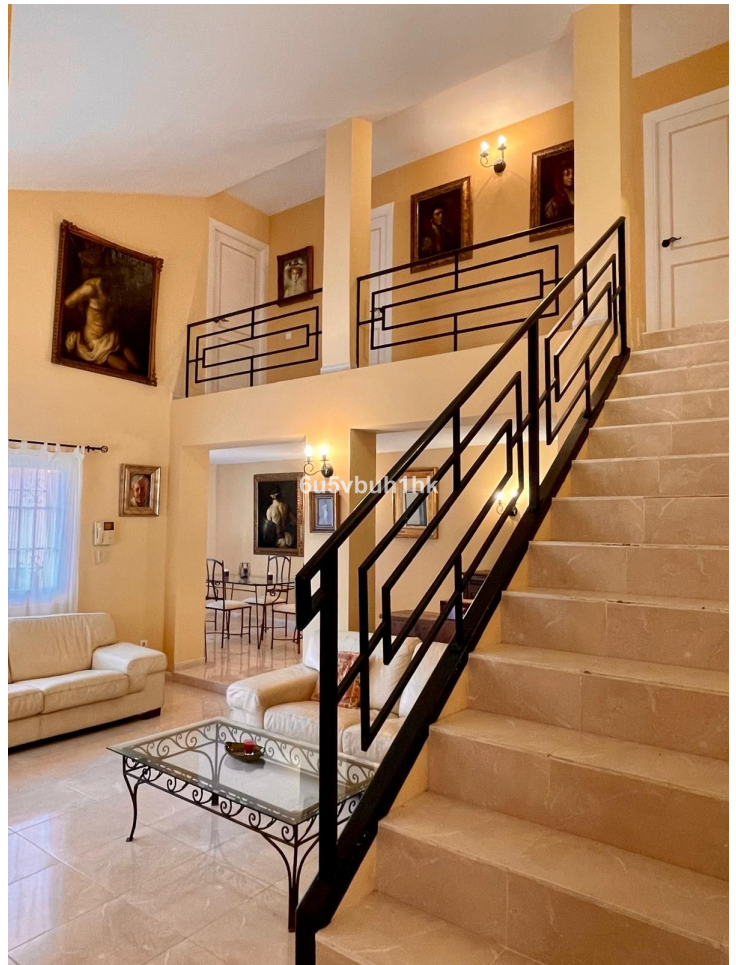
Views

- ✓ Panoramic
- ✓ Pool
- ✓ Urban





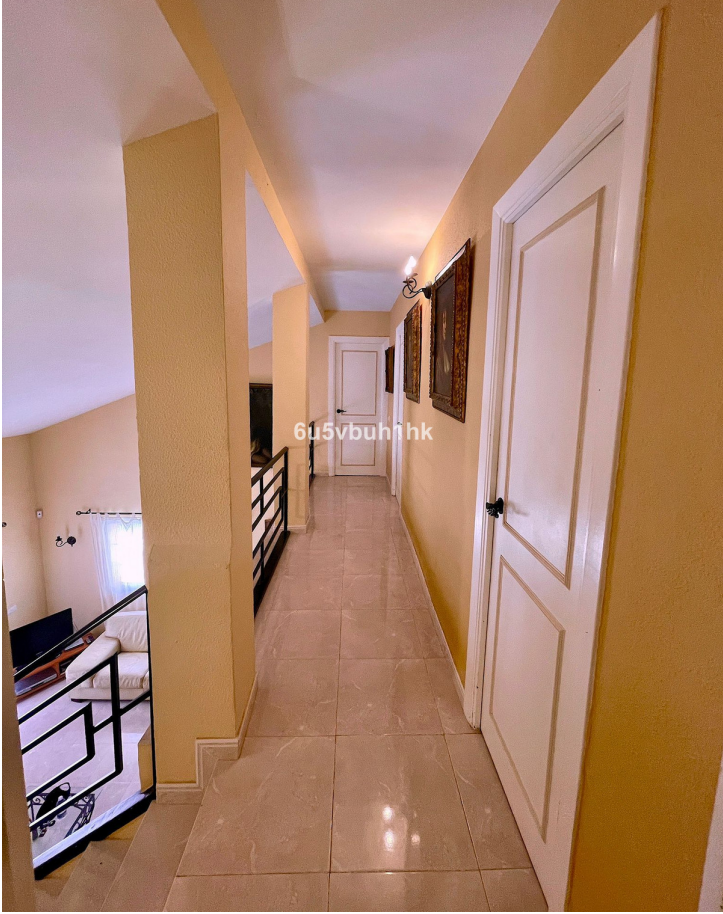




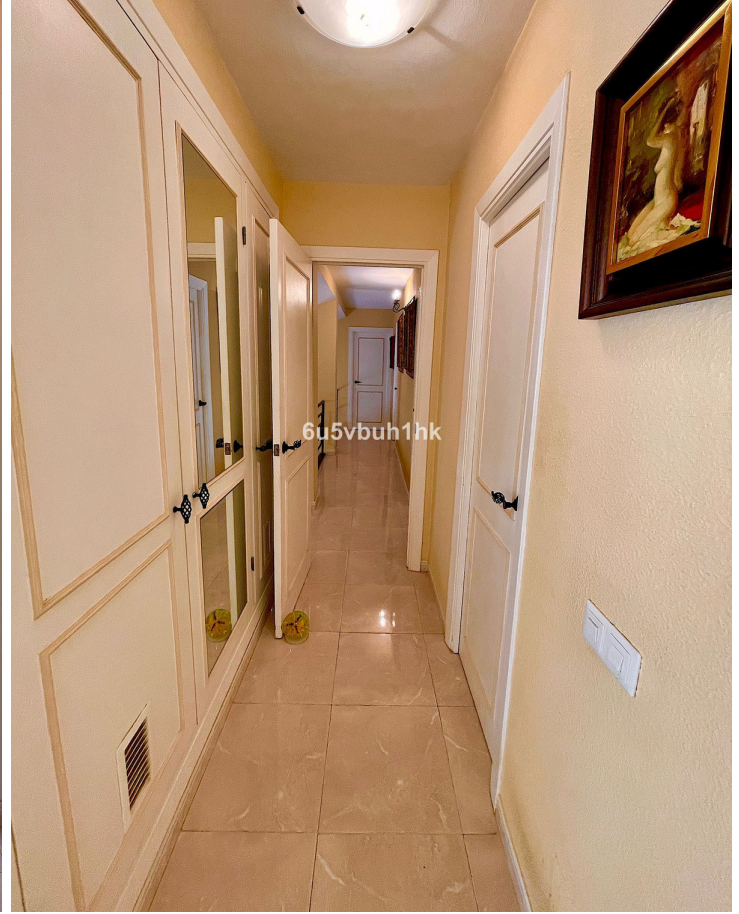










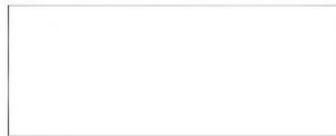
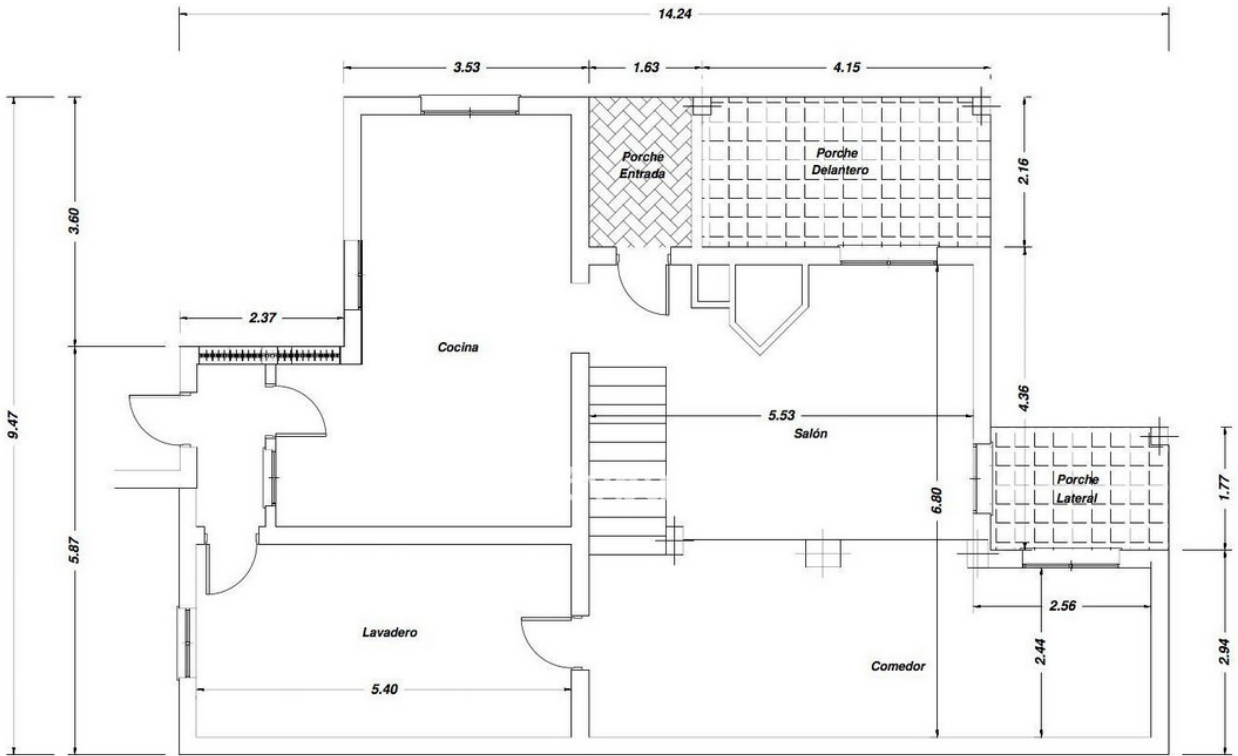




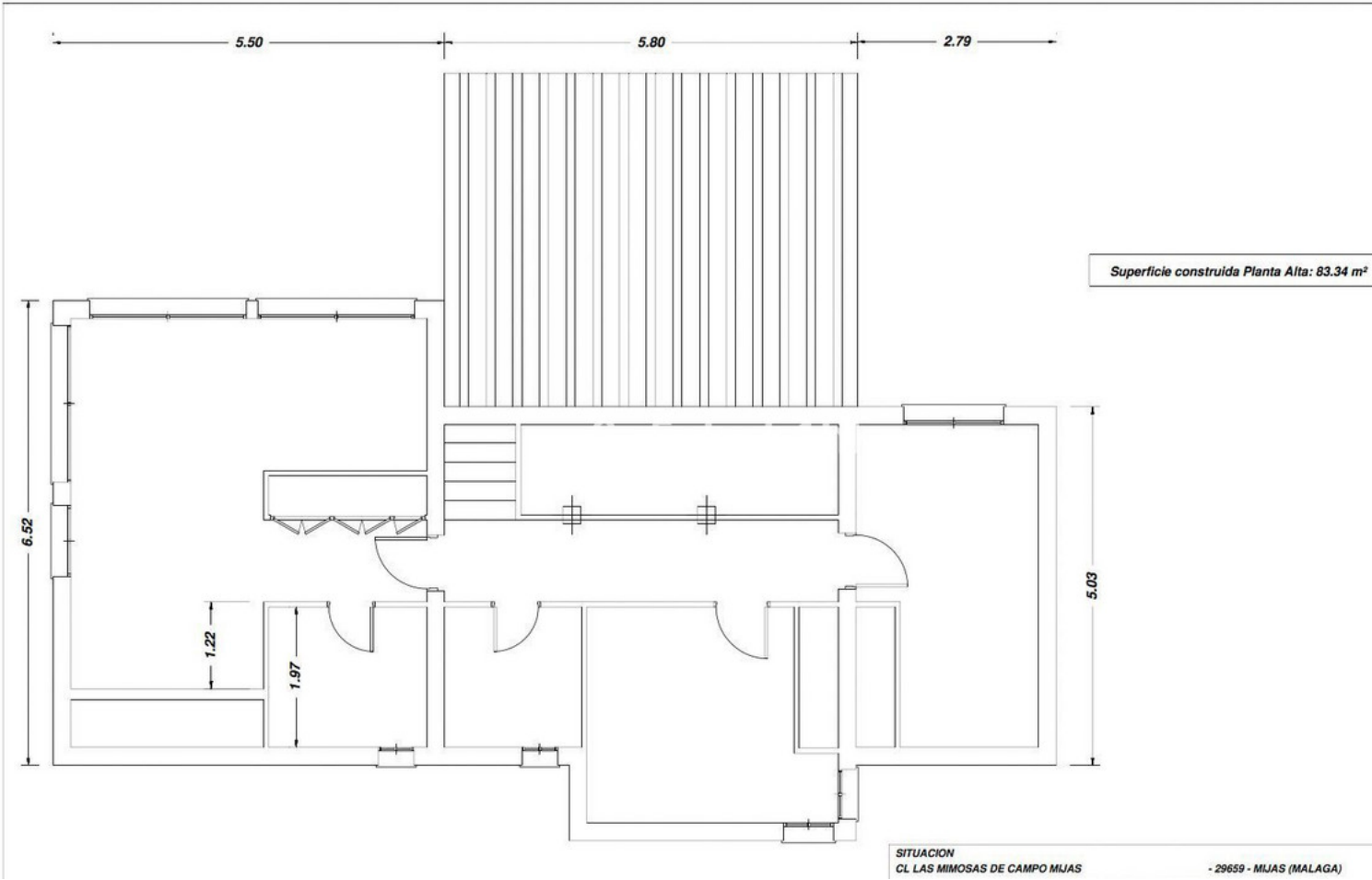




6u5vbuh1hk



PLANO	PLANTA BAJA ACOTADA	PLANO Nº	3
		FECHA	AGOSTO 2016
		ESCALA	1:50
		FIRMA	



Superficie construida Planta Alta: 83.34 m²

SITUACION
CL LAS MIMOSAS DE CAMPO MIJAS

- 29659 - MIJAS (MALAGA)