

**Ref.-ID: MIBGR4881724**

**Fuengirola**

**House**

**Community: 528 EUR / year**

**IBI: 923 EUR / year**

**Rubbish: 30 EUR / year**



**4**



**4**



**278 m2**



**461 m2**

Modern Luxury Villa with Stunning Views in Fuengirola Welcome to Residencial Palm Beach, Fuengirola! This is an exceptional opportunity to acquire a modern property built in 2021 that combines exclusive design, spacious solutions, and a dream location with world-class views. With 4 bedrooms and 4 bathrooms across spacious and tastefully decorated areas, this home is designed to provide maximum comfort, whether as a permanent residence or a holiday retreat. A Unique Location - Close to the Beach with Panoramic Views Residencial Palm Beach sits on a beautiful plot overlooking Fuengirola and the sparkling Mediterranean Sea. From the property, you can enjoy panoramic sea views, and within a short walk, you'll find yourself on the beautiful Higuera Beach, known for its crystal-clear waters and relaxing atmosphere. This area offers an exclusive and tranquil setting while remaining close to the vibrant city life and local attractions. The Property - Spacious, Modern, and Elegant Built with high-quality materials, the house features a modern style with large windows that allow ample natural light and provide unobstructed views of the surroundings. The property consists of four bedrooms, each with its own bathroom, making it ideal for families or for hosting guests. The kitchen and living area have an open-plan design, with a top-of-the-line modern kitchen and a large living room with direct access to the terrace and pool area. Here, you can enjoy the sun and views over the Mediterranean, and there is also a spacious garden suitable for both children and adults. Golf Courses and Leisure Activities Nearby The area around Fuengirola is renowned for its wide selection of golf courses, making it an attractive destination for golf enthusiasts. Just a short drive away, you'll find some of the most popular courses on the Costa del Sol, including the prestigious La Cala Golf and Mijas Golf Club. The courses are well-maintained and suitable for players of all levels, making them perfect for both experienced players and beginners wanting to try the sport. Activities for Families with Young Children and Retirees The Fuengirola and Higuera area offers something for everyone, regardless of age. For families with children, there are many activities, including Bioparc Fuengirola, where kids can learn about wildlife in a naturalistic environment. The beaches also have play areas for children, and there are several water parks nearby. For retirees looking for a peaceful lifestyle, the area is filled with charming cafés, cozy restaurants, and a wide range of coastal and hiking trails. There is also a vibrant cultural scene with art galleries, concerts, and festivals year-round. Practical Information Property Type: Detached villa Year Built: 2021 Area: Spacious rooms and a large terrace with pool area Number of Bedrooms: 4 Number of Bathrooms: 4 Walking Distance to Beach: Short walk to Higuera Beach With this property, you can enjoy the best of Costa del Sol - a perfect blend of relaxation, luxury, and activity options.

**Setting**

- ✓ Town
- ✓ Beachside
- ✓ Close To Shops
- ✓ Close To Sea
- ✓ Close To Town
- ✓ Urbanisation

**Climate Control**

- ✓ Air Conditioning
- ✓ Hot A/C
- ✓ Cold A/C
- ✓ U/F/H Bathrooms

**Kitchen**

- ✓ Fully Fitted

**Utilities**

- ✓ Electricity

**Orientation**

- ✓ South West

**Views**

- ✓ Sea
- ✓ Port
- ✓ Panoramic
- ✓ Pool

**Garden**

- ✓ Private

**Category**

- ✓ Holiday Homes
- ✓ Investment
- ✓ Luxury
- ✓ Resale

**Condition**

- ✓ Excellent

**Features**

- ✓ Covered Terrace
- ✓ Fitted Wardrobes
- ✓ Near Transport
- ✓ Private Terrace
- ✓ WiFi

**Security**

- ✓ Gated Complex
- ✓ Electric Blinds
- ✓ Entry Phone
- ✓ Alarm System

**Pool**

- ✓ Communal

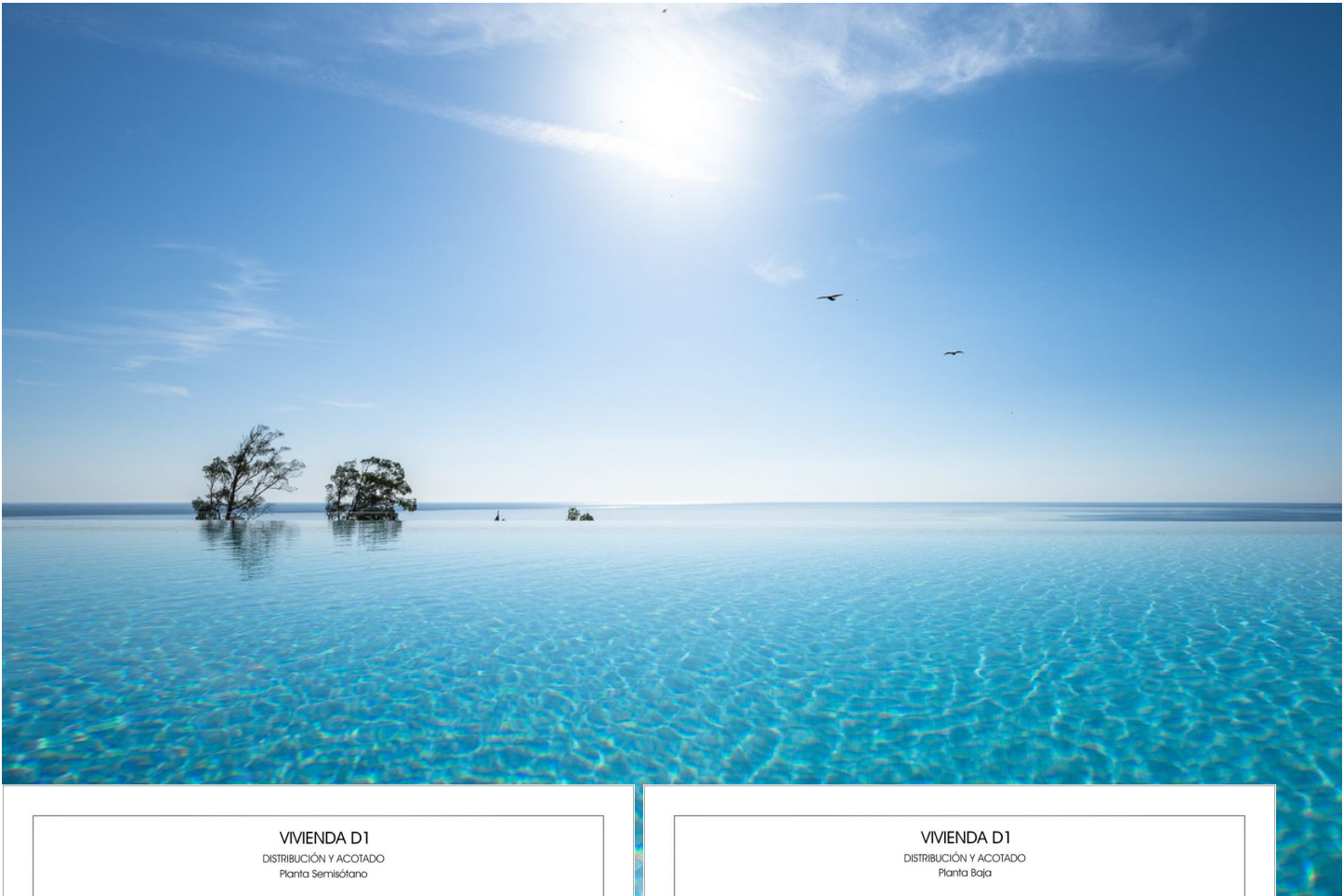
**Furniture**

- ✓ Optional

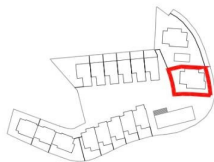
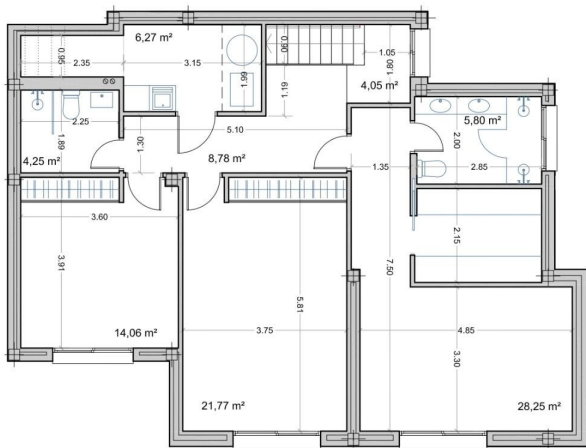
**Parking**

- ✓ Underground



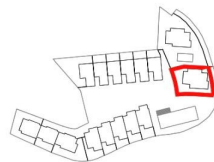
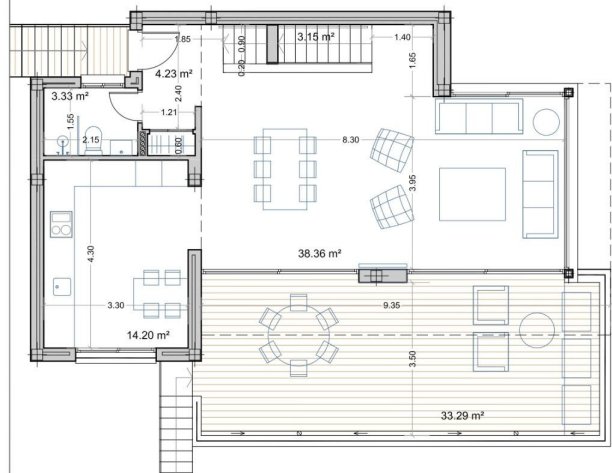


VIVIENDA D1  
DISTRIBUCIÓN Y ACOTADO  
Planta Semisótano



SUPERFICIE CONSTRUIDA VIVIENDA	
Planta Semisótano	110,80 m²
Planta Baja	76,12 m²
Planta Primera	46,80 m²
TOTAL SUPERFICIE CONSTRUIDA VIVIENDA	
234,72 m²	
SUPERFICIE ÚTIL según decreto 218/2005	
219,58 m²	

VIVIENDA D1  
DISTRIBUCIÓN Y ACOTADO  
Planta Baja



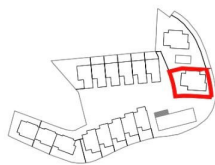
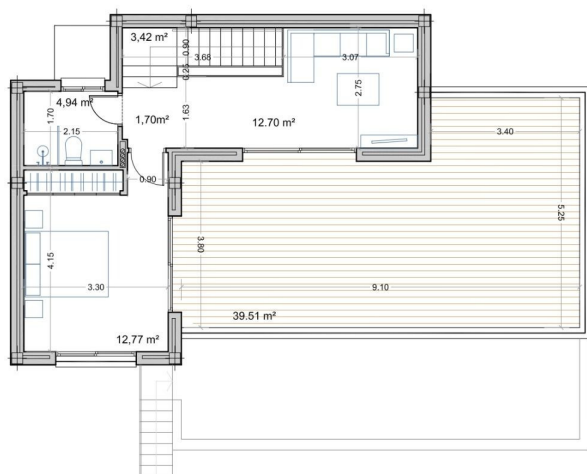
SUPERFICIE CONSTRUIDA VIVIENDA	
Planta Semisótano	110,80 m²
Planta Baja	76,12 m²
Planta Primera	46,80 m²
TOTAL SUPERFICIE CONSTRUIDA VIVIENDA	
234,72 m²	
SUPERFICIE ÚTIL según decreto 218/2005	
219,58 m²	



# VIVIENDA D1

## DISTRIBUCIÓN Y ACOTADO

### Planta Primera

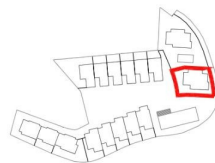
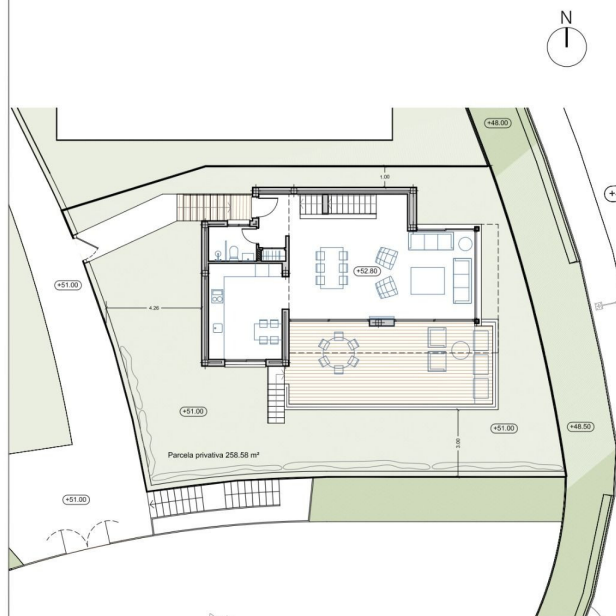


SUPERFICIE CONSTRUIDA VIVIENDA	
Planta Semisótano	110,80 m²
Planta Baja	76,12 m²
Planta Primera	46,80 m²
<b>TOTAL SUPERFICIE CONSTRUIDA VIVIENDA</b>	<b>234,72 m²</b>
<b>SUPERFICIE ÚTIL según decreto 218/2005</b>	<b>219,58 m²</b>

# VIVIENDA D1

## EMPLAZAMIENTO EN SU PARCELA

### Escala S/E



SUPERFICIE CONSTRUIDA VIVIENDA	
Planta Semisótano	110,80 m²
Planta Baja	76,12 m²
Planta Primera	46,80 m²
<b>TOTAL SUPERFICIE CONSTRUIDA VIVIENDA</b>	<b>234,72 m²</b>
<b>SUPERFICIE ÚTIL según decreto 218/2005</b>	<b>219,58 m²</b>

















































































































