

Ref.-ID: MIBGR4890280

Benalmadena Pueblo

House



7



6



499 m2



786 m2

Discover your dream villa in an unbeatable location! This stunning, tastefully renovated detached home offers everything you need to enjoy luxury living. With 499 m² built and 786 m² plot size, this three-storey villa has 6 spacious bedrooms and 6 bathrooms, guaranteeing space and comfort for the whole family. The main floor welcomes you with an elegant entrance hall, a separate kitchen and a large living-dining room with a fireplace that opens up to spectacular views. Furthermore, on this floor there is a bedroom with en suite bathroom, as well as a guest toilet. The upper floor has the master suite which occupies a prominent place and has a dressing room and a full bathroom, all of large dimensions, in addition, there are 2 other bedrooms on this floor which also have their own bathroom, which guarantees privacy and comfort for all residents. The upper floor is completed with a spectacular terrace offering panoramic views of the Mediterranean Sea, creating a perfect space to relax and enjoy the surroundings. In the basement there is an independent flat, a multifunctional room and parking for 3 cars. The property has a lift that connects the 3 floors. It is only 5 minutes drive from the beach and close to international schools, which makes it ideal for families and holiday rentals. The villa is well communicated, with the train station, the train station and the bus station.

Orientation

- ✓ East
- ✓ South
- ✓ West

Views

- ✓ Sea
- ✓ Mountain

Garden

- ✓ Private

Condition

- ✓ Excellent

Features

- ✓ Lift
- ✓ Marble Flooring
- ✓ Domotics

Parking

- ✓ More Than One

Pool

- ✓ Private

Furniture

- ✓ Not Furnished

Climate Control

- ✓ Air Conditioning
- ✓ Fireplace

Kitchen

- ✓ Fully Fitted

















65vm6kt4q3svd64z

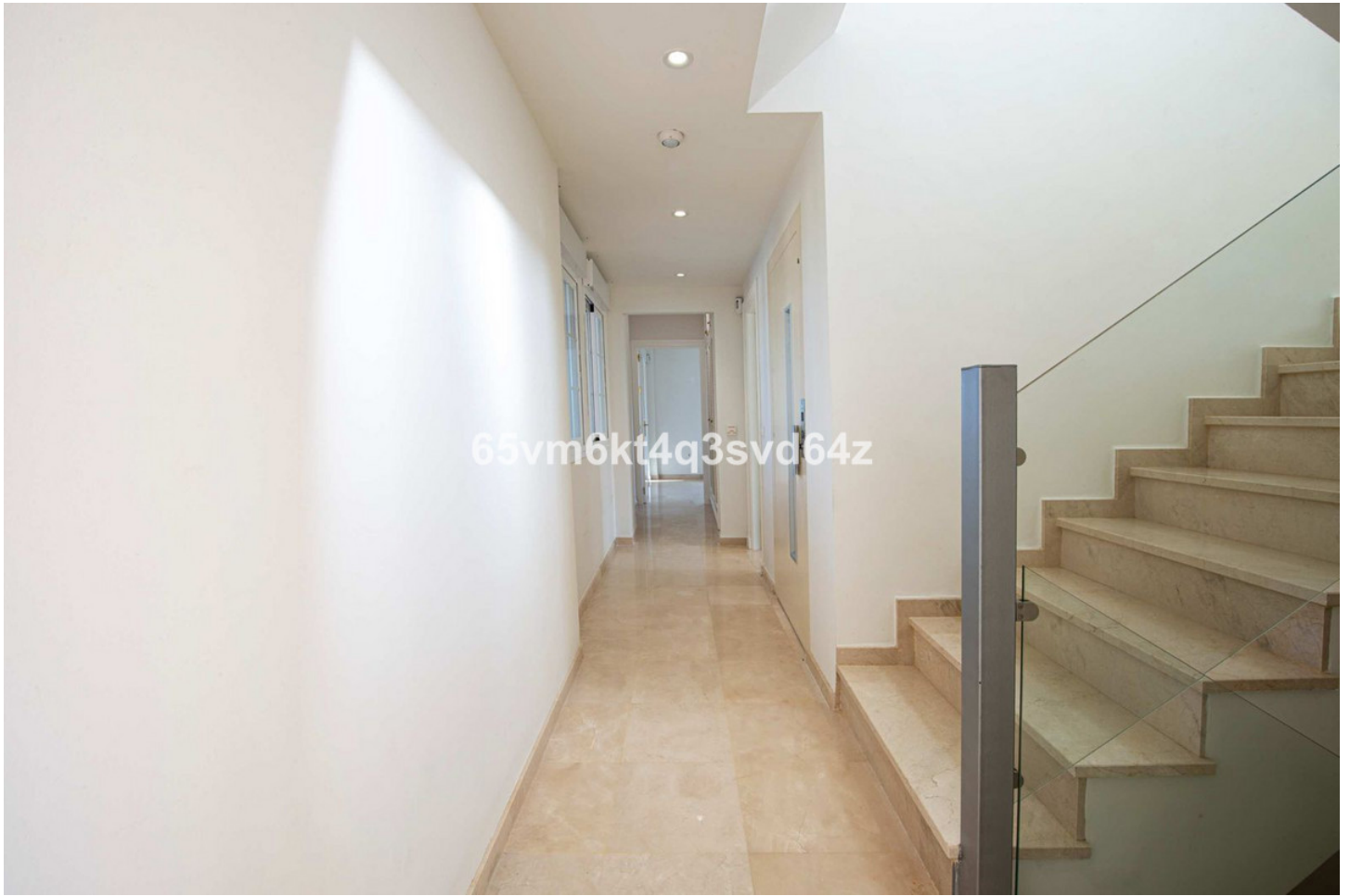


65vm6kt4q3svd64z









65vm6kt4q3svd64z



65vm6kt4q3svd64z







65vm6kt4q3svd64z



65vm6kt4q3svd64z











65vm6kt4q3svd64z



65vm6kt4q3svd64z



65vm6kt4q3svd64z



65vm6kt4q3svd64z















65vm6kt4q3svd64z



65vm6kt4q3svd64z







