

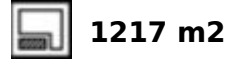
Ref.-ID: MIBGR4894894

Benahavís

House

Community: 2,256 EUR / year IBI: 1,761 EUR / year

Rubbish: 18 EUR / year



Luxury Andalusian Villa for Sale in La Alquería, Benahavís Discover an exceptional Andalusian villa that seamlessly blends luxury, privacy, and breathtaking views in the prestigious area of La Alquería, Benahavís. This exquisite property offers a perfect combination of elegance and comfort, making it an ideal choice for discerning buyers. Location La Alquería is an exclusive residential community of building plots and villas centred around the Atalaya Golf and Country Club in Benahavís. Close to the bilingual Colegio Atalaya and Marbella Montessori School, the Mercadona supermarket on the Benahavís road, and is well served by restaurants and bars. Estepona, Puerto Banús, and the centre of Marbella are all less than 15 minutes away by car. Property Features Outdoor Oasis: Enjoy year-round relaxation with a heated pool, waterfall and jacuzzi, all set in beautifully landscaped grounds. Spacious Living: The villa boasts five generously sized double bedrooms, four of which have en-suite bathrooms. The master suite is a standout, featuring a vaulted ceiling and a round jacuzzi bathtub. Elegant Interiors: A bespoke kitchen, Italian marble finishes, and custom-designed furniture showcase the villa's sophisticated style and attention to detail. Ample Parking & Versatility: A secure garage accommodates up to five cars, with additional parking available outside. The expansive basement offers potential for a home cinema or games room. An elevator conveniently connects all levels. Stunning Views and Security The views from the bedrooms, outdoor areas, and terraces are truly breathtaking, offering stunning panoramas of the sea and the iconic La Concha Mountain Your peace of mind is assured with top-tier security features, including a video intercom system, safety glass, and 24-hour surveillance, 2 security cars driving around the urbanization from dusk to dawn. An Exclusive Lifestyle This magnificent villa offers refined living in one of the Costa del Sol's most sought-after locations. Whether you seek a tranquil retreat or a vibrant hub for entertaining, this property delivers a lifestyle of unparalleled luxury. This property comes equipped with cutting-edge AI technology: a digital personal concierge designed to make your life easier. With just a few taps on the screen, you can effortlessly book services like a driver, dry cleaning, or house cleaning. Additionally, this system serves as a valuable tool for managing rentals, streamlining the process for both you and your guests. It's all about convenience and enhancing your living experience. For more information or to schedule a viewing, please contact us today.

Setting

- ✓ Close To Golf

Climate Control

- ✓ Air Conditioning
- ✓ Fireplace

Kitchen

- ✓ Fully Fitted

Category

- ✓ Resale

Orientation

- ✓ West

Views

- ✓ Sea
- ✓ Mountain
- ✓ Golf

Garden

- ✓ Private
- ✓ Easy Maintenance

Condition

- ✓ Excellent

Features

- ✓ Covered Terrace
- ✓ Lift
- ✓ Fitted Wardrobes
- ✓ Private Terrace
- ✓ Solarium
- ✓ Games Room
- ✓ Storage Room
- ✓ Ensuite Bathroom
- ✓ Access for people with reduced mobility
- ✓ Marble Flooring
- ✓ Jacuzzi
- ✓ Bar
- ✓ Basement

Security

- ✓ Electric Blinds
- ✓ Entry Phone
- ✓ Alarm System
- ✓ Safe

Pool

- ✓ Private
- ✓ Heated

Furniture

- ✓ Fully Furnished

Parking

- ✓ Garage
- ✓ Private





















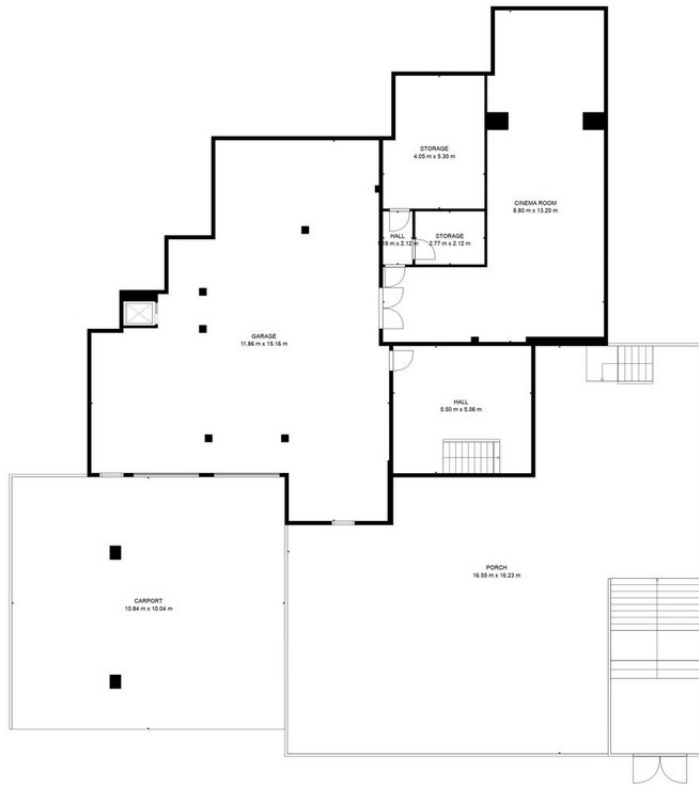
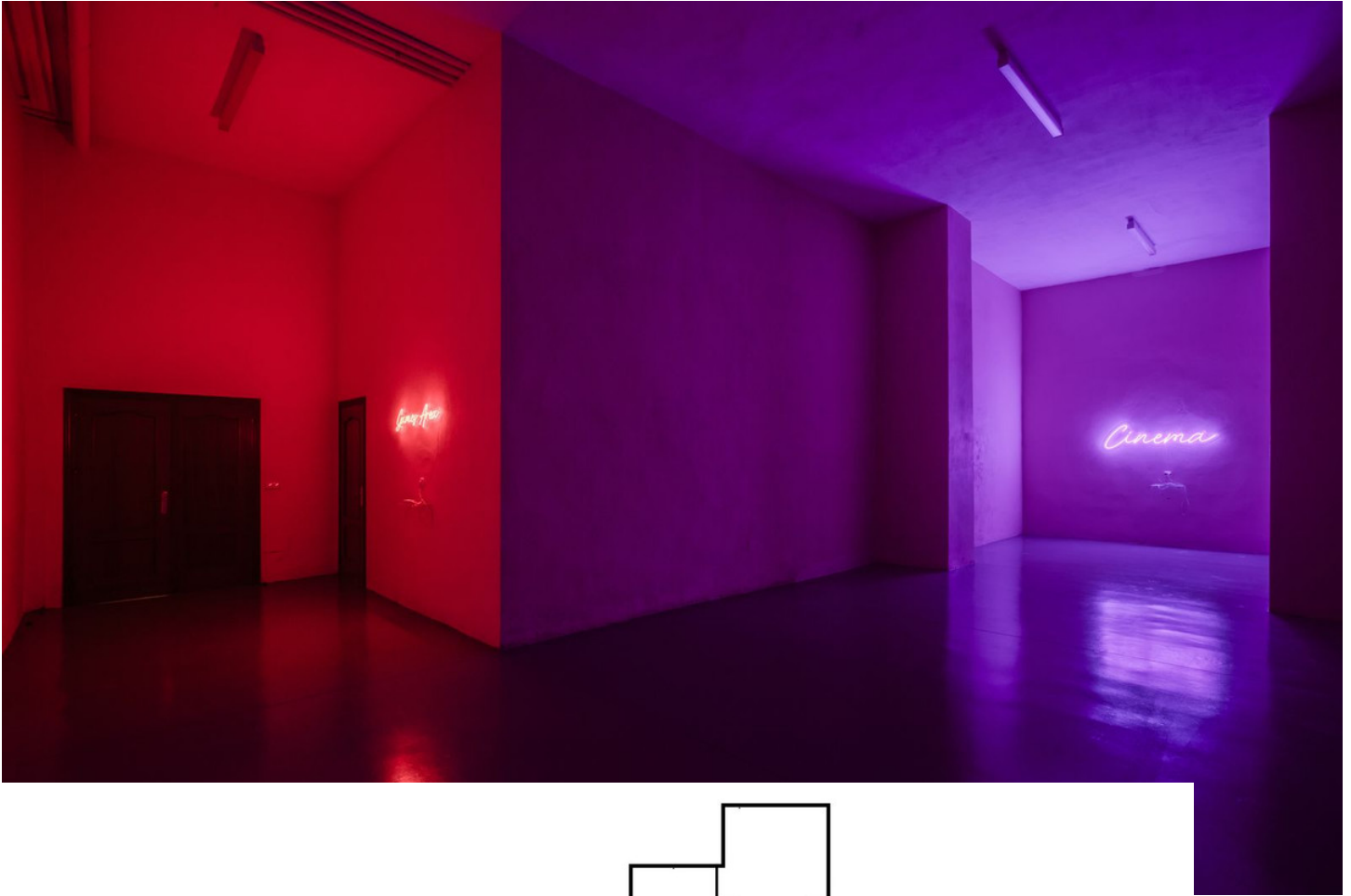






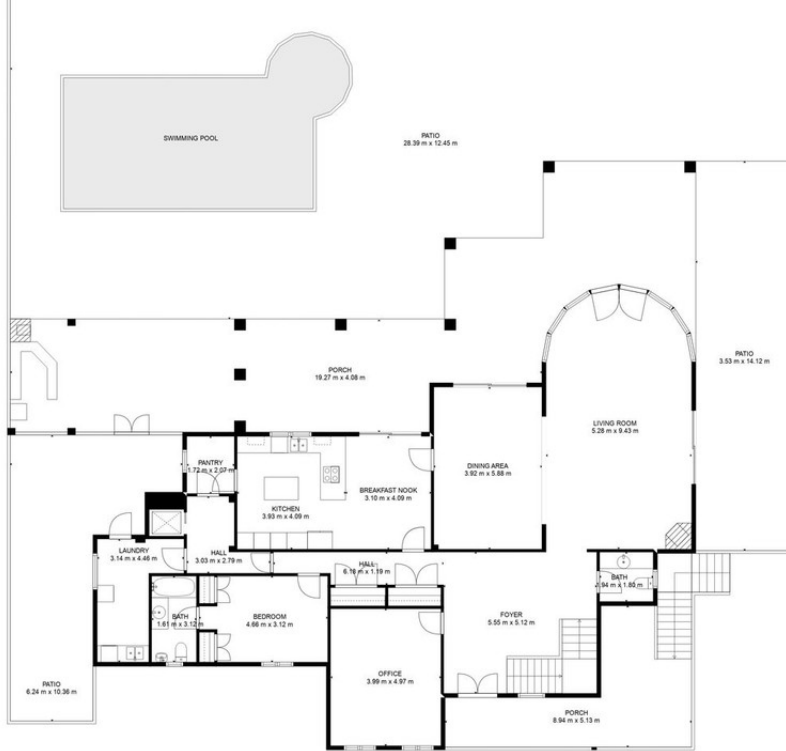






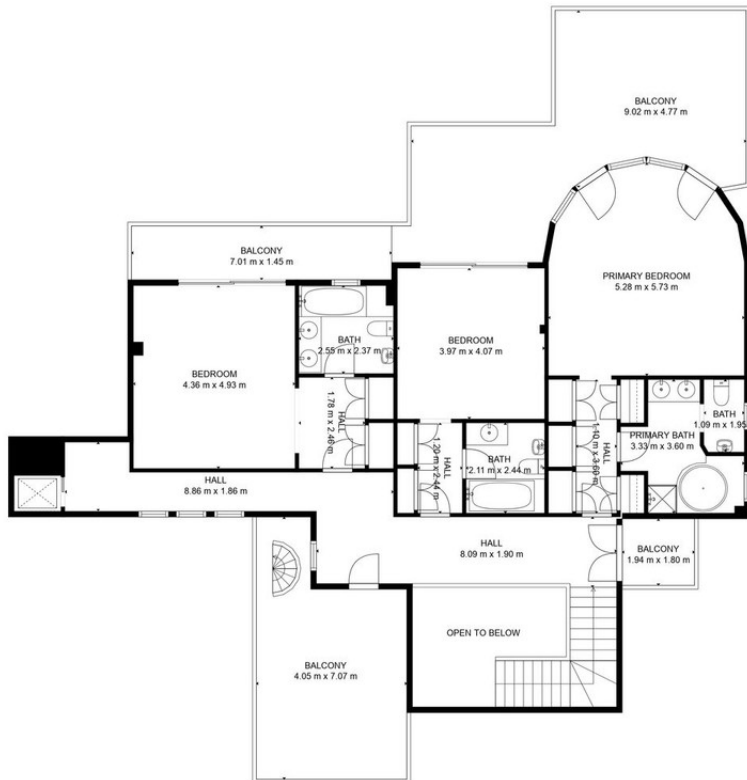
TOTAL: 461 m²
 FLOOR 0: 108 m², FLOOR 1: 207 m², FLOOR 2: 146 m², FLOOR 3: 0 m²
 EXCLUDED AREAS: GARAGE: 131 m², STORAGE: 26 m², PORCH: 351 m²,
 CARPORT: 109 m², PATIO: 334 m², BALCONY: 74 m²,
 OPEN TO BELOW: 11 m², TERRACE: 44 m²

FLOOR PLAN CREATED BY CUBICASA APP. MEASUREMENTS DEEMED HIGHLY RELIABLE BUT NOT GUARANTEED.



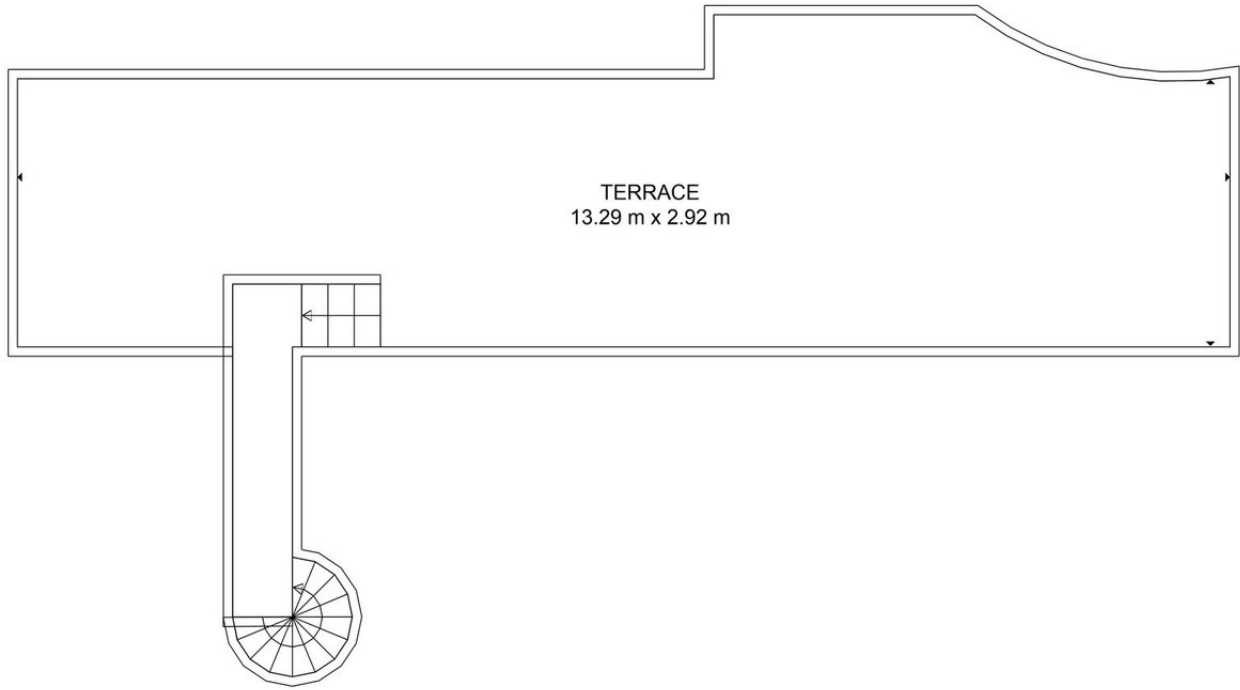
TOTAL: 461 m²
 FLOOR 0: 108 m², FLOOR 1: 207 m², FLOOR 2: 146 m², FLOOR 3: 0 m²
 EXCLUDED AREAS: GARAGE: 131 m², STORAGE: 26 m², PORCH: 351 m²,
 CARPORT: 109 m², PATIO: 334 m², BALCONY: 74 m²,
 OPEN TO BELOW: 11 m², TERRACE: 44 m²

FLOOR PLAN CREATED BY CUBICASA APP. MEASUREMENTS DEEMED HIGHLY RELIABLE BUT NOT GUARANTEED.



TOTAL: 461 m²
 FLOOR 0: 108 m², FLOOR 1: 207 m², FLOOR 2: 146 m², FLOOR 3: 0 m²
 EXCLUDED AREAS: GARAGE: 131 m², STORAGE: 26 m², PORCH: 351 m²,
 CARPORT: 109 m², PATIO: 334 m², BALCONY: 74 m²,
 OPEN TO BELOW: 11 m², TERRACE: 44 m²

FLOOR PLAN CREATED BY CUBICASA APP. MEASUREMENTS DEEMED HIGHLY RELIABLE BUT NOT GUARANTEED.



TOTAL: 461 m2
FLOOR 0: 108 m2, FLOOR 1: 207 m2, FLOOR 2: 146 m2, FLOOR 3: 0 m2
EXCLUDED AREAS: GARAGE: 131 m2, STORAGE: 26 m2, PORCH: 351 m2,
CARPORT: 109 m2, PATIO: 334 m2, BALCONY: 74 m2,
OPEN TO BELOW: 11 m2, TERRACE: 44 m2

FLOOR PLAN CREATED BY CUBICASA APP. MEASUREMENTS DEEMED HIGHLY RELIABLE BUT NOT GUARANTEED.



