

**Ref.-ID: MIBGR4900084**

**Estepona**

**Apartment**

**Community: 780 EUR / year**

**IBI: 300 EUR / year**

**Rubbish: 90 EUR / year**



Let us introduce you to this charming one-bedroom duplex, ideal for a couple seeking comfort, tranquility, and a connection with nature. Nestled in a very peaceful area surrounded by natural landscapes, this home offers panoramic views of the sea and mountains, making it a unique retreat. On the ground floor, you'll find the spacious and bright master bedroom, featuring large windows that showcase spectacular mountain views, along with an en-suite bathroom. Upstairs, the living-dining area seamlessly integrates with the open kitchen, creating a spacious and inviting area that opens onto a private terrace—perfect for relaxing, enjoying breakfast outdoors, or simply taking in the views. The community is designed for enjoyment, boasting a communal swimming pool, gardens with a children's play area, a well-equipped gym with air conditioning, and a multi-purpose room for events and gatherings. Additionally, the apartment includes a parking space in the private garage. This duplex offers the perfect combination of comfort, design, and natural surroundings—ideal for those looking for a peaceful lifestyle without compromising on amenities. Contact us for more information or to visit this wonderful property.

**Setting**

- ✓ Country
- ✓ Close To Town
- ✓ Close To Forest
- ✓ Close To Marina
- ✓ Urbanisation

**Climate Control**

- ✓ Air Conditioning

**Kitchen**

- ✓ Fully Fitted

**Utilities**

- ✓ Electricity
- ✓ Drinkable Water
- ✓ Telephone

**Orientation**

- ✓ South

**Views**

- ✓ Sea
- ✓ Mountain

**Garden**

- ✓ Communal

**Category**

- ✓ Bargain

**Condition**

- ✓ Good

**Features**

- ✓ Lift
- ✓ Private Terrace
- ✓ Gym
- ✓ Ensuite Bathroom
- ✓ Marble Flooring
- ✓ Fiber Optic

**Security**

- ✓ Gated Complex

**Pool**

- ✓ Communal

**Furniture**

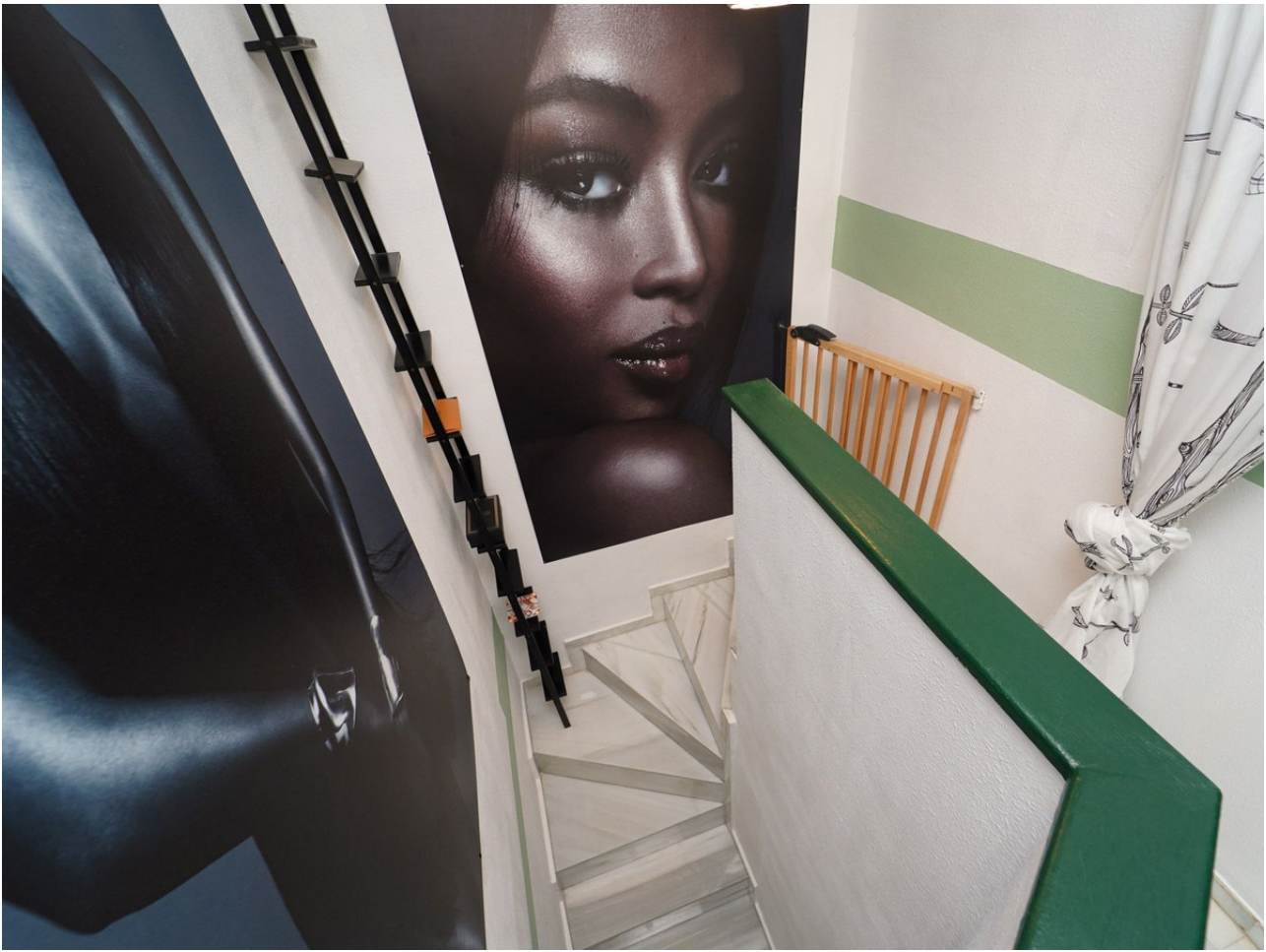
- ✓ Fully Furnished

**Parking**

- ✓ Underground

































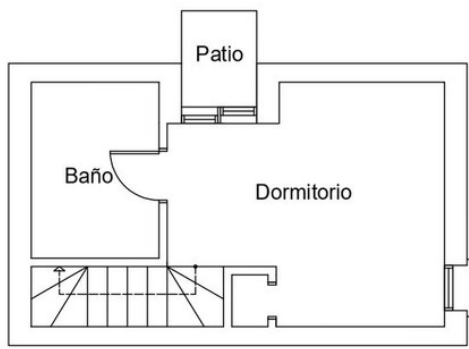








# Planta Baja



# Planta Alta

