



**Sales - Apartment - Estepona  
600.000€**

**www.mibgroup.es  
+34 662 58 96 58  
info@mibgroup.es**

**Ref.-ID: MIBGR4901587**

**Estepona**

**Apartment**

**Community: 1,800 EUR / year**

**IBI: 1,200 EUR / year**



**2**



**2**



**87 m2**

**BRIGHT AND TRANQUIL PENTHOUSE WITH SEA VIEWS ON THE COSTA DEL SOL** This charming penthouse is located in an excellent area of Estepona, just 700 meters from the beach, allowing you to enjoy the sea and Mediterranean climate. Additionally, it is ideally situated, only 20 minutes from Marbella and 50 minutes from the airport, making it easy to access other areas of interest. With a south-facing orientation, this property takes full advantage of natural light throughout the day. From its 56 m<sup>2</sup> terrace, you can relax while enjoying stunning sea views. The property is in excellent condition, with high-quality finishes that ensure a comfortable and functional environment. The penthouse is equipped with air conditioning to maintain a pleasant temperature at all times, and the garage is included in the price. Residents of the complex have access to a communal garden and swimming pool, where they can enjoy a relaxing environment. Located near restaurants, shops, and golf courses, this property is ideal for families and those seeking a peaceful home, well-connected and with all necessary services within reach. Built in 2021, this property is an excellent option for those looking to live on the Costa del Sol.

**Setting**

- ✓ Close To Port
- ✓ Close To Shops
- ✓ Close To Sea
- ✓ Close To Town
- ✓ Close To Schools
- ✓ Close To Marina
- ✓ Urbanisation

**Views**

- ✓ Sea
- ✓ Mountain
- ✓ Golf
- ✓ Country
- ✓ Panoramic
- ✓ Urban
- ✓ Street

**Garden**

- ✓ Communal

**Category**

- ✓ Golf
- ✓ Holiday Homes
- ✓ Investment
- ✓ Luxury
- ✓ Resale
- ✓ Contemporary

**Orientation**

- ✓ South East
- ✓ South

**Features**

- ✓ Covered Terrace
- ✓ Lift
- ✓ Fitted Wardrobes
- ✓ Near Transport
- ✓ Private Terrace
- ✓ Solarium
- ✓ WiFi
- ✓ Storage Room
- ✓ Ensuite Bathroom
- ✓ Marble Flooring
- ✓ Double Glazing

**Security**

- ✓ Gated Complex
- ✓ Entry Phone

**Condition**

- ✓ Excellent

**Furniture**

- ✓ Part Furnished

**Parking**

- ✓ Underground
- ✓ Garage
- ✓ Covered
- ✓ Open
- ✓ Street
- ✓ Communal
- ✓ Private

**Pool**

- ✓ Communal

**Kitchen**

- ✓ Fully Fitted

**Utilities**

- ✓ Electricity
- ✓ Drinkable Water
- ✓ Telephone











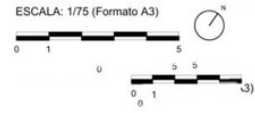
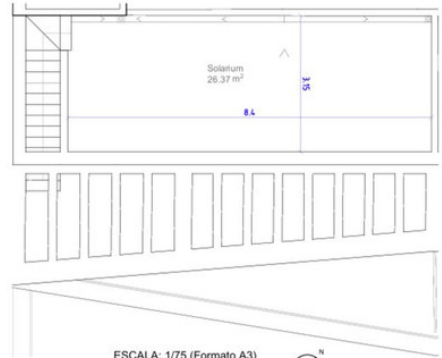
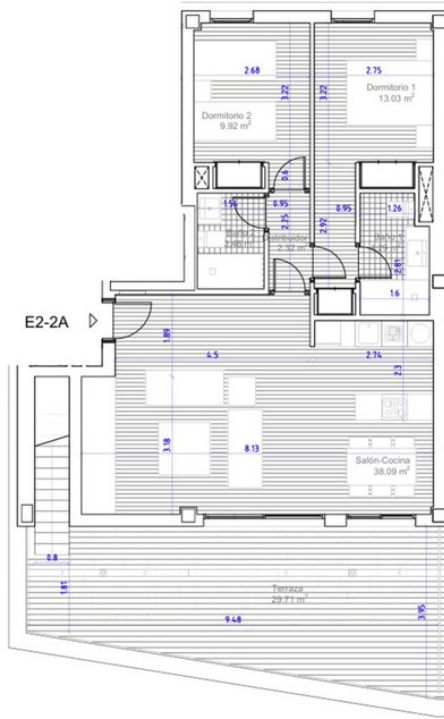
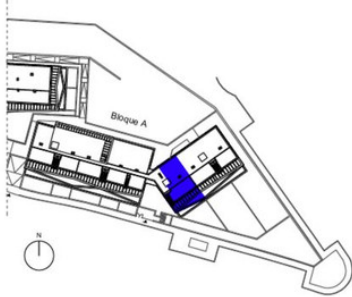












<b>SUPERFICIES</b>	
Superficie construida interior:	87,20 m <sup>2</sup>
Superficie construida:	
- Terraza descubierta:	35,30 m <sup>2</sup>
- Solarium	31,07 m <sup>2</sup>
- Escalera S.	3,88 m <sup>2</sup>
Total construida + PPZC:	99,94 m <sup>2</sup>
Superficie útil interior:	71,11 m <sup>2</sup>
Superficie útil terraza cubierta:	
- Terraza descubierta:	29,71 m <sup>2</sup>
- Solarium	26,37 m <sup>2</sup>
- Escalera S.	3,05 m <sup>2</sup>
Total útil:	130,69 m <sup>2</sup>
<b>DECRETO 218/2005</b>	
Superficie Construida:	109,13 m <sup>2</sup>
Superficie útil:	78,22 m <sup>2</sup>

Imágenes no contractuales y meramente ilustrativas sujetas a modificaciones de orden técnico, jurídico o comercial de la dirección facultativa o autoridad competente. Las infografías de las fachadas, elementos constructivos y restantes espacios orientativos podrán ser objeto de verificación o modificación en los proyectos técnicos. El mobiliario de las infografías interiores no está incluido y el equipamiento de las viviendas será el indicado en la correspondiente memoria de calidades. La certificación energética se corresponde con la establecida en proyecto en trámite. Toda la información y entrega de documentación se hará según lo establecido en el Real Decreto 518/1985 y demás normas que pudieran complementarlo ya sean de carácter estatal o autonómico.