

## Ventas - Casa - Benahavís

# 5.284.420€

Benahavís

Casa

Comunidad: 5,400 EUR / año



4



7



680 m2



1005 m2

Cada día es un día de verano en las Villas Esmeralda, las residencias de 4 dormitorios con gloriosos jardines en terrazas y exclusivas zonas de piscina. Aquí, todo se ha creado para ofrecer la experiencia más relajante y relajante, como las salas de vapor y sauna y el cine en casa en la planta sótano. como las salas de vapor y sauna y el cine en casa en la planta sótano. Todas las villas cuentan con muros de hormigón, ventanas de doble acristalamiento, sistema de refrigeración y calefacción, espacios exteriores nivelados y nivelados, adoquines prefabricados de hormigón en la entrada y el aparcamiento. Situado dentro de la comunidad cerrada de Los Jaralillos - Benahavís, se enorgullece de ofrecer un entorno privado y seguro para sus residentes con servicios de seguridad 24/7 de primera calidad. EL PROYECTO OFRECE 53 VILLAS CON 3 ESTILOS DIFERENTES DE 4, 5 Y 6 DORMITORIOS, CON PRECIOS QUE OSCILAN ENTRE 3.600.000 EU Y 8.400.000 EU.

### Posición

- ✓ Cerca de Golf
- ✓ Cerca de Tiendas
- ✓ Cerca de Ciudad
- ✓ Cerca de Colegios

### Climatización

- ✓ Aire Acondicionado
- ✓ Chimenea
- ✓ Suelo Radiante

### Cocina

- ✓ Equipada
- ✓ Parcialmente Equipada

### Categoría

- ✓ Lujo

### Orientación

- ✓ Sureste

### Vistas

- ✓ Mar
- ✓ Montaña
- ✓ Golf
- ✓ Campo
- ✓ Panorámicas
- ✓ Jardín
- ✓ Piscina

### Jardin

- ✓ Privado

### Estado

- ✓ Excelente
- ✓ Nueva Construcción

### Características

- ✓ Terraza Cubierta
- ✓ Ascensor
- ✓ Armarios Empotrados
- ✓ Cerca de Transporte
- ✓ Terraza Privada
- ✓ Solario
- ✓ Gimnasio
- ✓ Sauna
- ✓ Sala de Juegos
- ✓ Aprtmnt. Huéspedes
- ✓ Trastero
- ✓ Lavadero
- ✓ Baño En-Suite
- ✓ Suelos de Mármol
- ✓ Jacuzzi
- ✓ Barbacoa
- ✓ Doble acristalamiento
- ✓ Domotica

### Seguridad

- ✓ Persianas Eléctricas
- ✓ Portero Automático
- ✓ Alarma
- ✓ Seguridad 24 Horas

### Piscina

- ✓ Privada
- ✓ Con Calefacción

### Muebles

- ✓ Amueblada

### Aparcamiento

- ✓ Cubierto









# ESMERALDA VILLAS

4 - BED	<b>SQM</b>	680 - 822
	<b>SQFT</b>	7,320 - 8,848
<b>PLOT SIZE</b>		
<b>SQM</b>	1,005 - 1,669	
<b>SQFT</b>	10,818 - 17,965	

Including total indoor & outdoor built up area.



BASEMENT

Disclaimer: All pictures, plans, layouts, information, data and details included in this brochure are indicative only and may change at any time up to the final 'as built' status in accordance with final designs of the project, regulatory approvals and planning permissions. All accessories and interior finishes such as wallpaper, chandeliers, furniture, electronics, white goods, curtains, hard and soft landscaping, pavements, features, gym, and other elements displayed in the brochure, or between the plot boundary, are not part of the unit and are shown for illustrative purposes only.



# ESMERALDA VILLAS

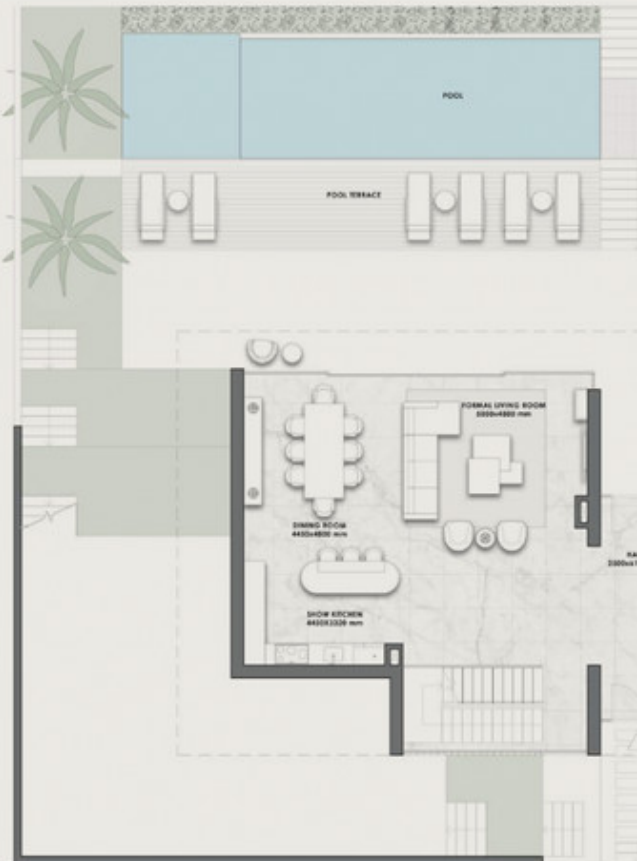
4 - BED	<b>SQM</b>	680 - 822
	<b>SQFT</b>	7,320 - 8,848
<b>PLOT SIZE</b>		
<b>SQM</b>	1,005 - 1,669	
<b>SQFT</b>	10,818 - 17,965	

Including total indoor & outdoor built up area.



GROUND FLOOR

Disclaimer: All pictures, plans, layouts, information, data and details included in this brochure are indicative only and may change at any time up to the final 'as built' status in accordance with final designs of the project, regulatory approvals and planning permissions. All accessories and interior finishes such as wallpaper, chandeliers, furniture, electronics, white goods, curtains, hard and soft landscaping, pavements, features, gym, and other elements displayed in the brochure, or between the plot boundary, are not part of the unit and are shown for illustrative purposes only.



# ESMERALDA VILLAS

<b>4 - BED</b>	<b>SQM</b> 680 - 822
	<b>SQFT</b> 7,320 - 8,848
<b>PLOT SIZE</b>	
<b>SQM</b>	1,005 - 1,669
<b>SQFT</b>	10,818 - 17,965

Including total indoor & outdoor built up area.



FIRST FLOOR



Disclaimer: All pictures, plans, layouts, information, data and details included in this brochure are indicative only and may change at any time up to the final 'as built' status in accordance with final designs of the project, regulatory approvals and planning permissions. All accessories and interior finishes such as wallpaper, chandeliers, furniture, electronics, white goods, curtains, hard and soft landscaping, pavements, features, gym, and other elements displayed in the brochure, or between the plot boundary, are not part of the unit and are shown for illustrative purposes only.

# ESMERALDA VILLAS

<b>4 - BED</b>	<b>SQM</b> 680 - 822
	<b>SQFT</b> 7,320 - 8,848
<b>PLOT SIZE</b>	
<b>SQM</b>	1,005 - 1,669
<b>SQFT</b>	10,818 - 17,965

Including total indoor & outdoor built up area.



ROOFTOP TERRACE



Disclaimer: All pictures, plans, layouts, information, data and details included in this brochure are indicative only and may change at any time up to the final 'as built' status in accordance with final designs of the project, regulatory approvals and planning permissions. All accessories and interior finishes such as wallpaper, chandeliers, furniture, electronics, white goods, curtains, hard and soft landscaping, pavements, features, gym, and other elements displayed in the brochure, or between the plot boundary, are not part of the unit and are shown for illustrative purposes only.